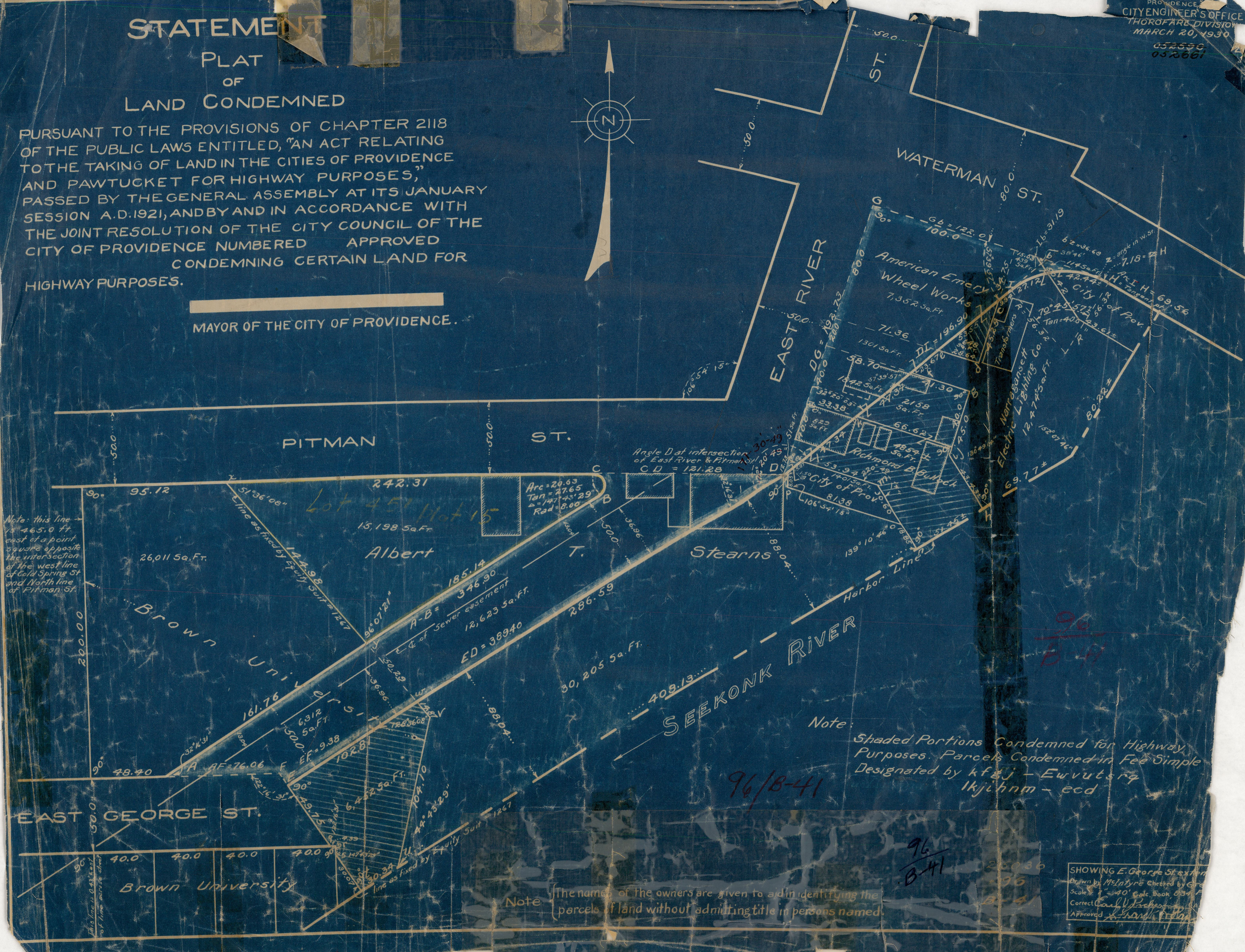


PROVIDENCE  
CITY ENGINEER'S OFFICE  
THORFARE DIVISION  
MARCH 20, 1930  
657556  
052661

# STATEMENT PLAT OF LAND CONDEMNED

PURSUANT TO THE PROVISIONS OF CHAPTER 2118 OF THE PUBLIC LAWS ENTITLED, "AN ACT RELATING TO THE TAKING OF LAND IN THE CITIES OF PROVIDENCE AND PAWTUCKET FOR HIGHWAY PURPOSES," PASSED BY THE GENERAL ASSEMBLY AT ITS JANUARY SESSION A.D. 1921, AND BY AND IN ACCORDANCE WITH THE JOINT RESOLUTION OF THE CITY COUNCIL OF THE CITY OF PROVIDENCE NUMBERED APPROVED CONDEMNING CERTAIN LAND FOR HIGHWAY PURPOSES.

MAYOR OF THE CITY OF PROVIDENCE.



Note: This line is 465.0 Ft. east of a point square opposite the intersection of the west line of Cold Spring St. and North line of Pitman St.

Note: Shaded Portions Condemned for Highway Purposes. Parcels Condemned in Fee Simple Designated by kfgj - Ewvutsrq lkjihnm - ecd

Note: The names of the owners are given to aid in identifying the parcels of land without admitting title in persons named.

SHOWING E. George Street  
Designed by McIntyre Checked by G...  
Scale 1" = 40' Calc. Book 63  
Corrected by V. Beckwith  
Approved by J. H. ...

96/B-41

96/B-41