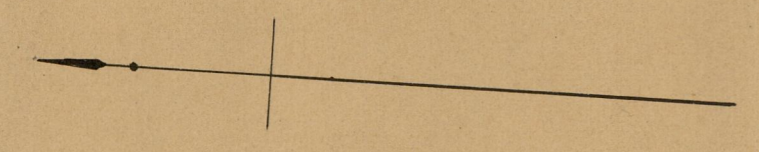
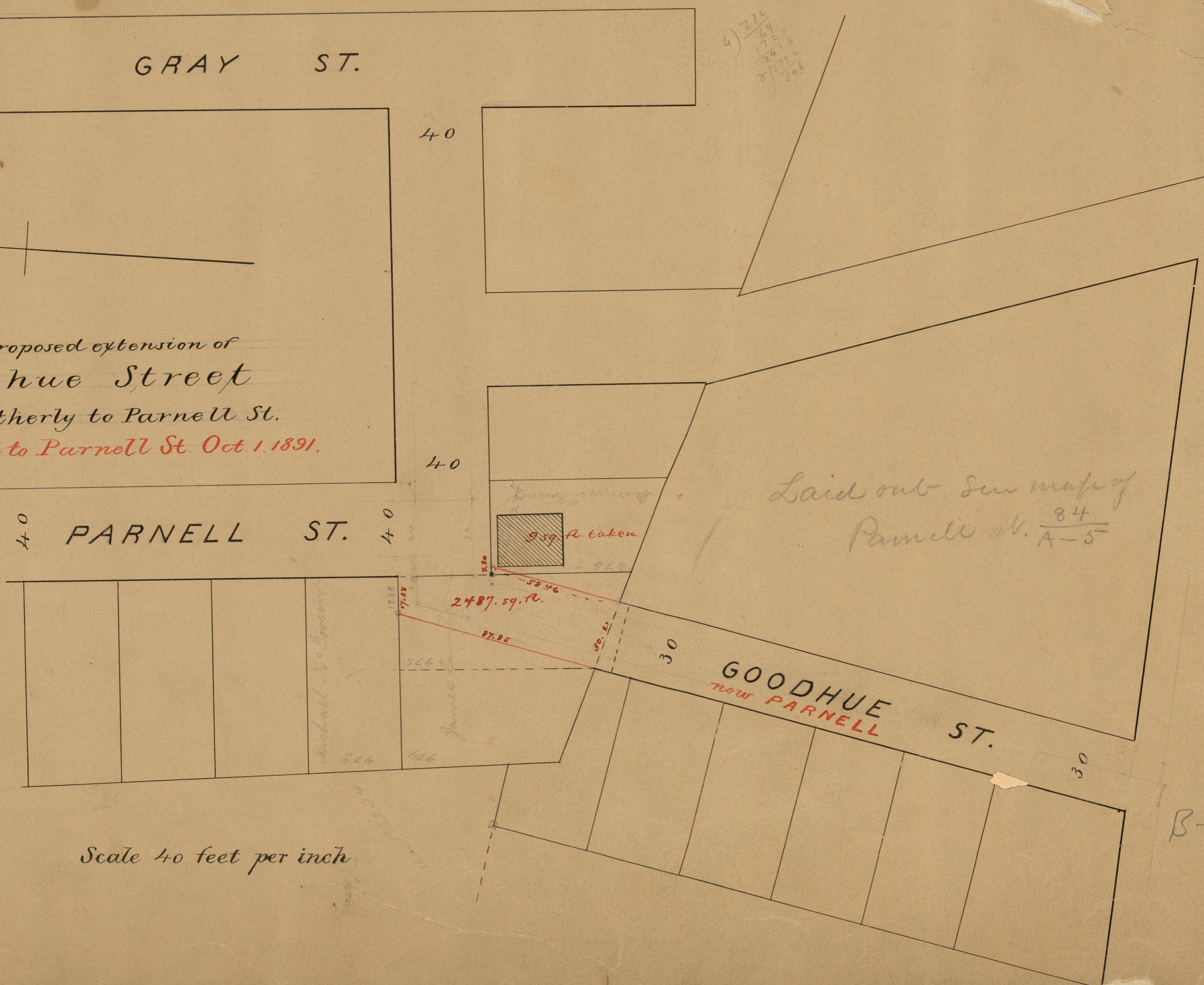


GRAY ST.



Plat showing proposed extension of  
Goodhue Street  
northerly to Parnell St.  
Name changed to Parnell St. Oct. 1. 1891.

4)  $\frac{276}{1769}$   
 $\frac{2416}{1769}$   
 $\frac{1772}{1769}$   
 $\frac{346}{1769}$



Scale 40 feet per inch

B-24

OFFICE No.	11729
DRAWER	96
SHEET	B-24