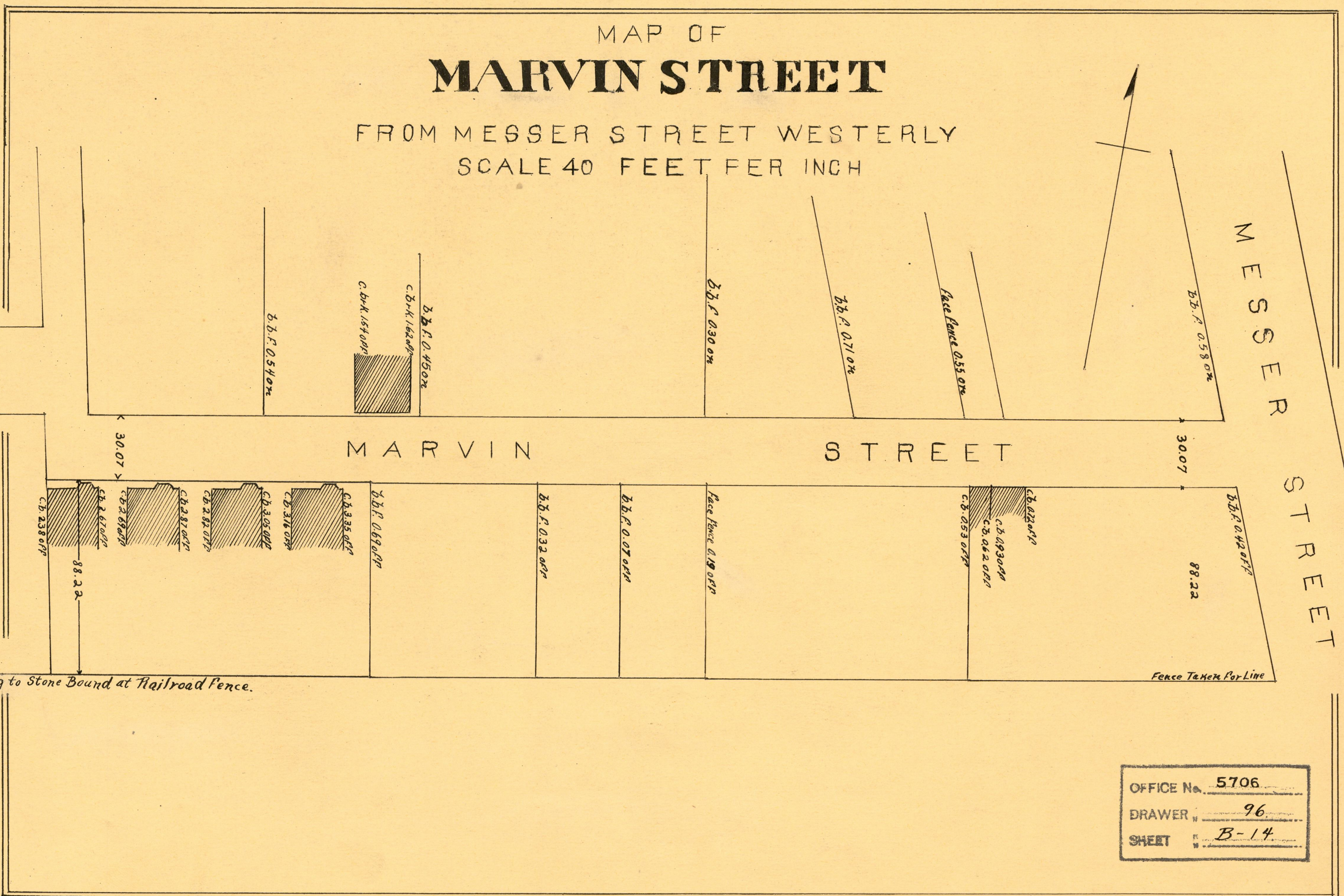
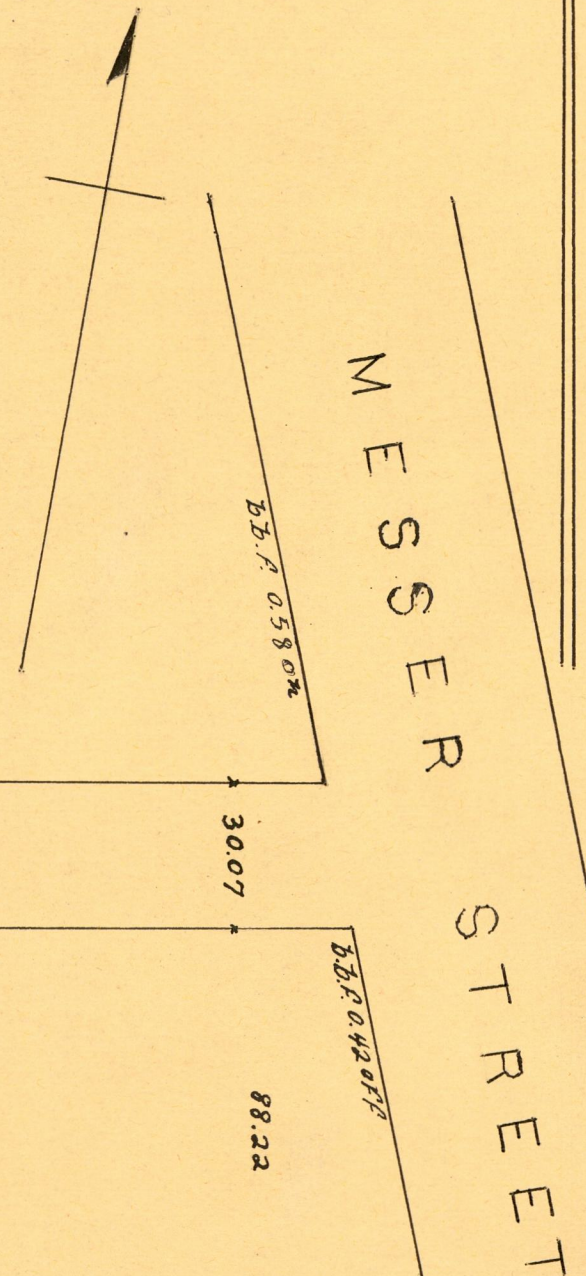


Dec. 1949-060132

Copy of 07539 Mar. 9<sup>th</sup> 1882

# MAP OF MARVIN STREET

FROM MESSER STREET WESTERLY  
SCALE 40 FEET PER INCH



b.b.P. 0.540m

b.b.P. 0.450m  
c.b.K. 1.620m  
c.b.K. 1.540m

b.b.P. 0.300m

b.b.P. 0.710m

Face Fence 0.550m

b.b.P. 0.580m

MARVIN STREET

MESSER STREET

30.07

30.07

c.b. 2.380m

c.b. 2.670m

c.b. 2.890m

c.b. 2.870m

c.b. 2.820m

c.b. 3.030m

c.b. 3.310m

c.b. 3.350m

b.b.P. 0.690m

b.b.P. 0.320m

b.b.P. 0.070m

Face Fence 0.190m

c.b. 0.530m

c.b. 0.930m  
c.b. 0.620m

c.b. 0.220m

b.b.P. 0.420m

88.22

Fence Taken For Line

Ranging to Stone Bound at Railroad Fence.

OFFICE No.	5706
DRAWER	96
SHEET	B-14