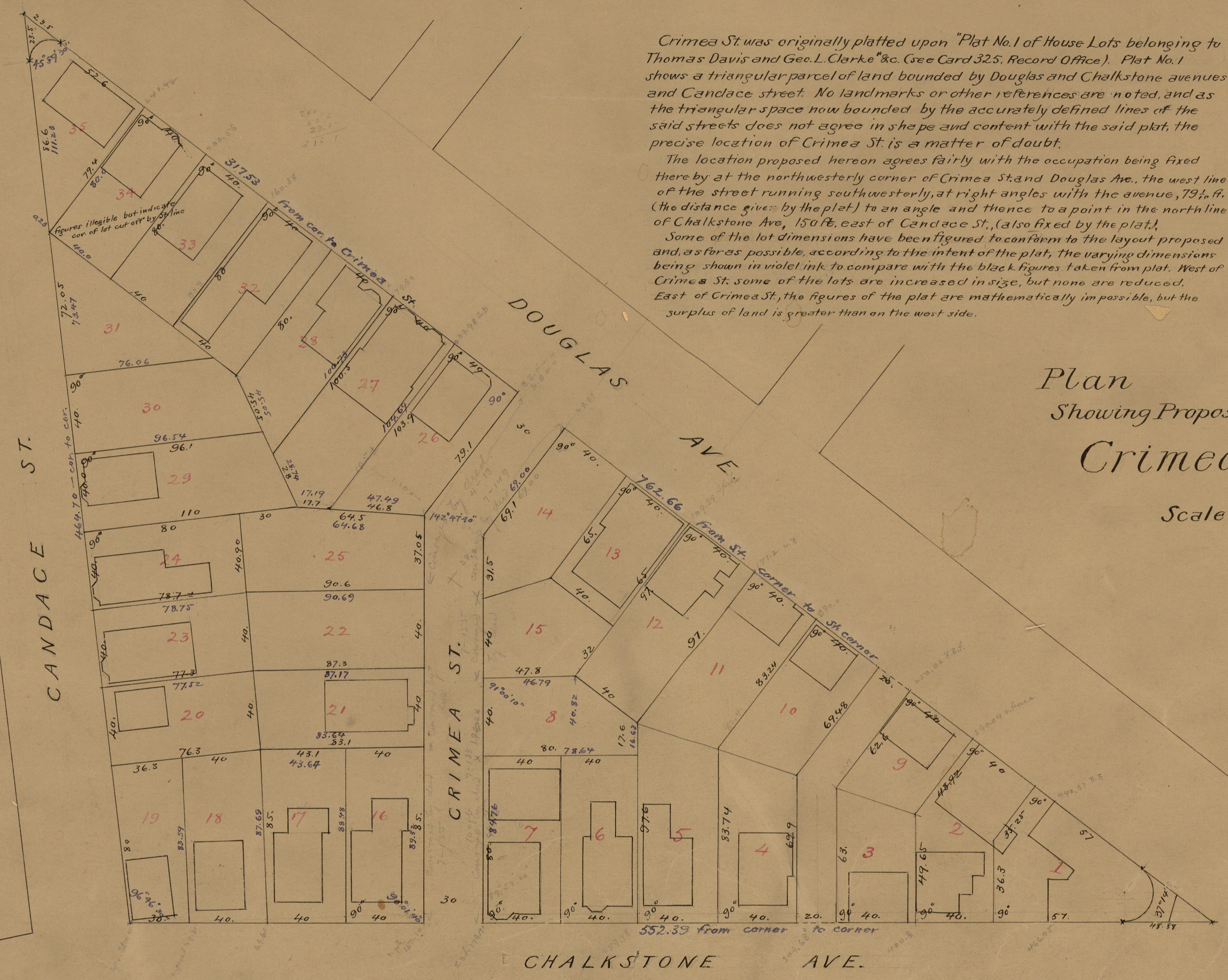


Crimea St. was originally platted upon "Plat No. 1 of House Lots belonging to Thomas Davis and Geo. L. Clarke & Co. (See Card 325, Record Office). Plat No. 1 shows a triangular parcel of land bounded by Douglas and Chalkstone avenues and Candace street. No landmarks or other references are noted, and as the triangular space now bounded by the accurately defined lines of the said streets does not agree in shape and content with the said plat, the precise location of Crimea St. is a matter of doubt.

The location proposed hereon agrees fairly with the occupation being fixed thereby at the northwesterly corner of Crimea St. and Douglas Ave., the west line of the street running southwesterly, at right angles with the avenue, 79 ft. (the distance given by the plat) to an angle and thence to a point in the northline of Chalkstone Ave., 150 ft. east of Candace St., (also fixed by the plat).

Some of the lot dimensions have been figured to conform to the layout proposed and, as far as possible, according to the intent of the plat, the varying dimensions being shown in violet ink to compare with the black figures taken from plat. West of Crimea St. some of the lots are increased in size, but none are reduced. East of Crimea St., the figures of the plat are mathematically impossible, but the surplus of land is greater than on the west side.

Plan
 Showing Proposed Location for
 Crimea Street
 Scale 40 feet per inch.



96
 A-40