

Plat showing location of bounds on the
Bellevue Plat.

PROVIDED BY
CITY ENGINEER'S OFFICE
STREET LINE DEPT.
Oct 30, 1908.
036063

Offsets in black were assumed and taken November 1878
Lines and distances in black from Bellevue plat.
Distances and angles in red taken on the ground Nov, 1878.
Distances in red are from bound to bound.

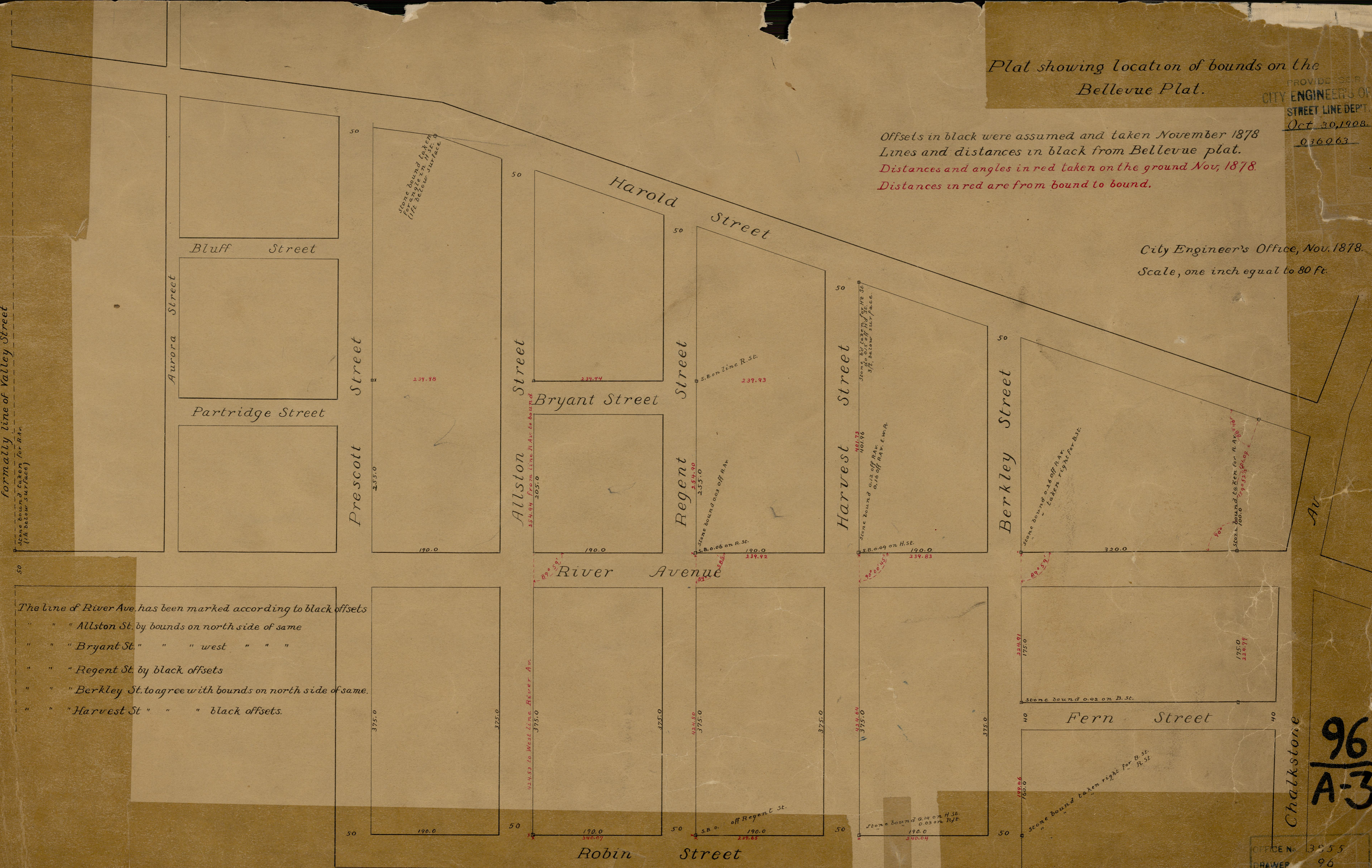
City Engineer's Office, Nov. 1878.
Scale, one inch equal to 80 ft.

formally line of Valley Street

stone bound taken for R.A.
(1/2 below surface)

50

The line of River Ave. has been marked according to black offsets
" " " Allston St. by bounds on north side of same
" " " Bryant St. " " west " " "
" " " Regent St. by black offsets
" " " Berkley St. to agree with bounds on north side of same.
" " " Harvest St. " " black offsets.



Chalkstone

96
A-3

OFFICE No. 3055
DRAWER 96
SHEET 1-3