

City Engineer's Office <sup>04112</sup>  
Oct. 2, 1877.

Scale of 20 feet to one inch.

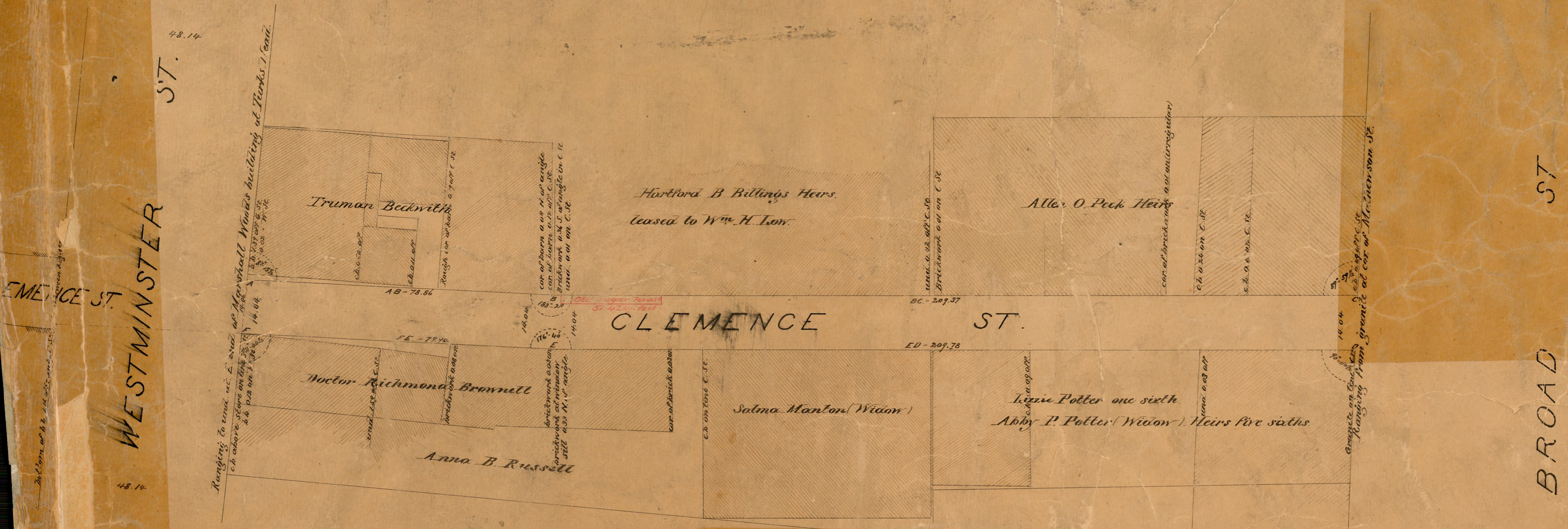
# MAP OF CLEMENCE ST.

FROM WESTMINSTER STREET TO BROAD STREET.

COMPARED

*William C. Beaman*  
Asst. Engineer

EXAMINED:



96  
A-2

OFFICE No. 3395  
DRAWER " 96  
SHEET " A-2