

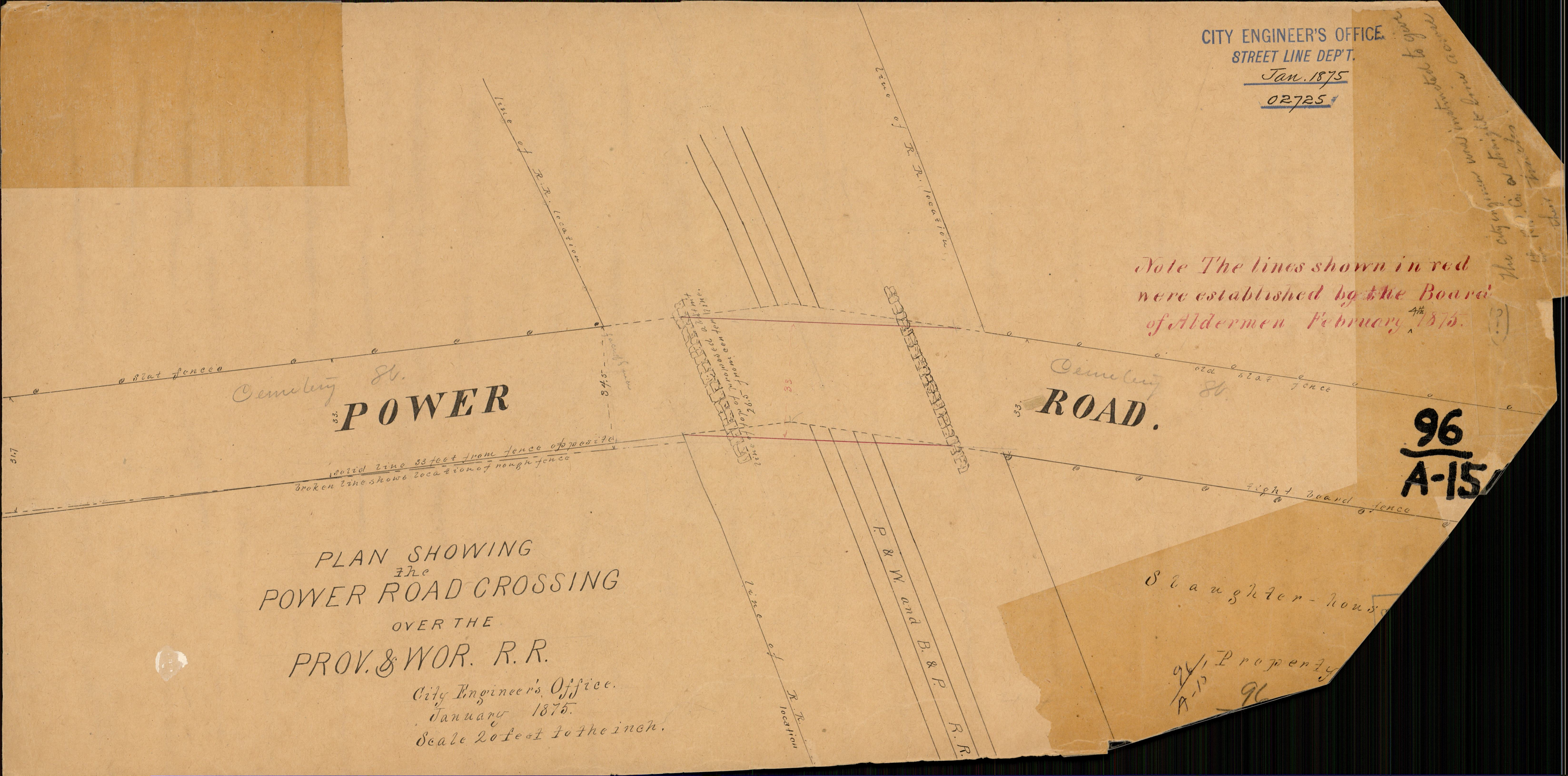
CITY ENGINEER'S OFFICE
STREET LINE DEP'T.

Jan. 1875

02725

Handwritten note: The city engineer was instructed to...
The city engineer was instructed to...
The city engineer was instructed to...

Note The lines shown in red were established by the Board of Aldermen February 4th 1875.



Cemetery St.
POWER

Cemetery Rd.
ROAD.

PLAN SHOWING
The
POWER ROAD CROSSING
OVER THE
PROV. & WOR. R.R.

City Engineer's Office.
January 1875.
Scale 20 feet to the inch.

96
A-15

Slaughter-house

Property
96