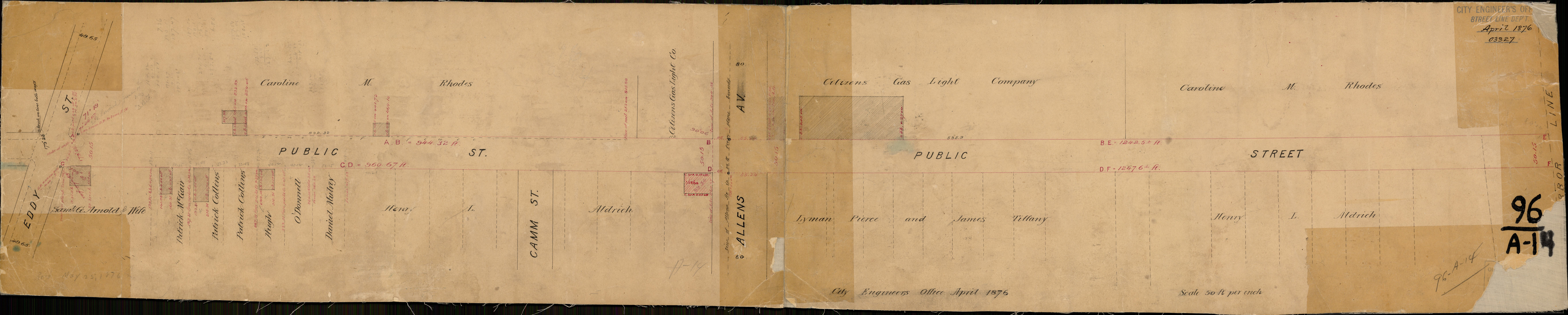


CITY ENGINEER'S OFFICE
STREET LINE DEPT.
April 1876
03327



PUBLIC

ST.

PUBLIC

STREET

ALLENS AV.

EDDY ST.

Saml. C. Arnold & Wife
Patrick McLean
Patrick Collins
Patrick Collins
Hugh
O'Donnell
Daniel Mulvey

Henry I.
Aldrich

CAMM ST.

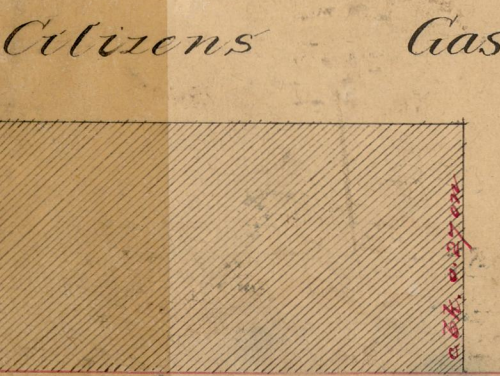
Lyman Pierce and James Tiffany

Henry I.
Aldrich

Citizens Gas Light Co.

Citizens Gas Light Company

Caroline M. Rhodes



A. B. = 944.32 ft.

C. D. = 960.67 ft.

B. E. = 1242.5 ± ft.

D. F. = 1247.6 ± ft.

ALLENS AV.

96
A-14

City Engineers Office April 1876

Scale 50 ft per inch

96-A-14

May 25, 1876