

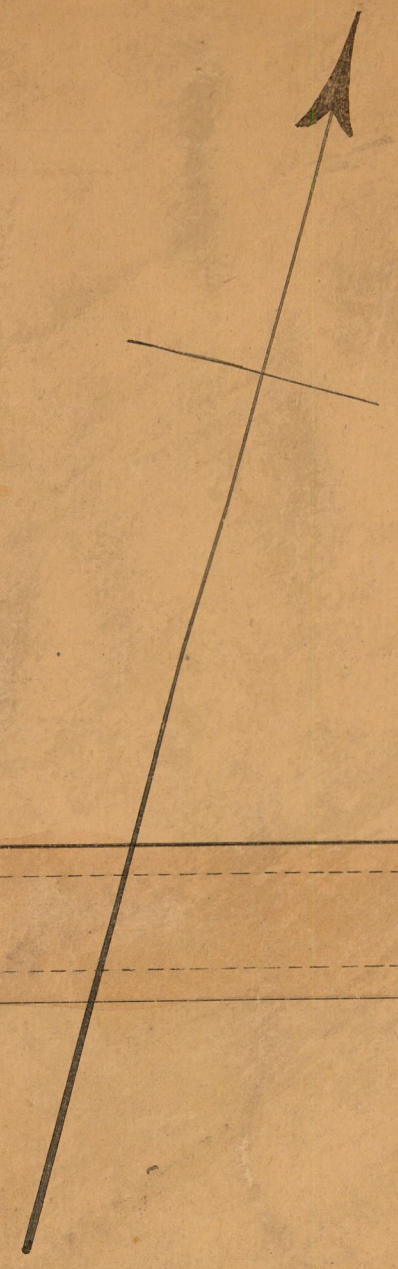
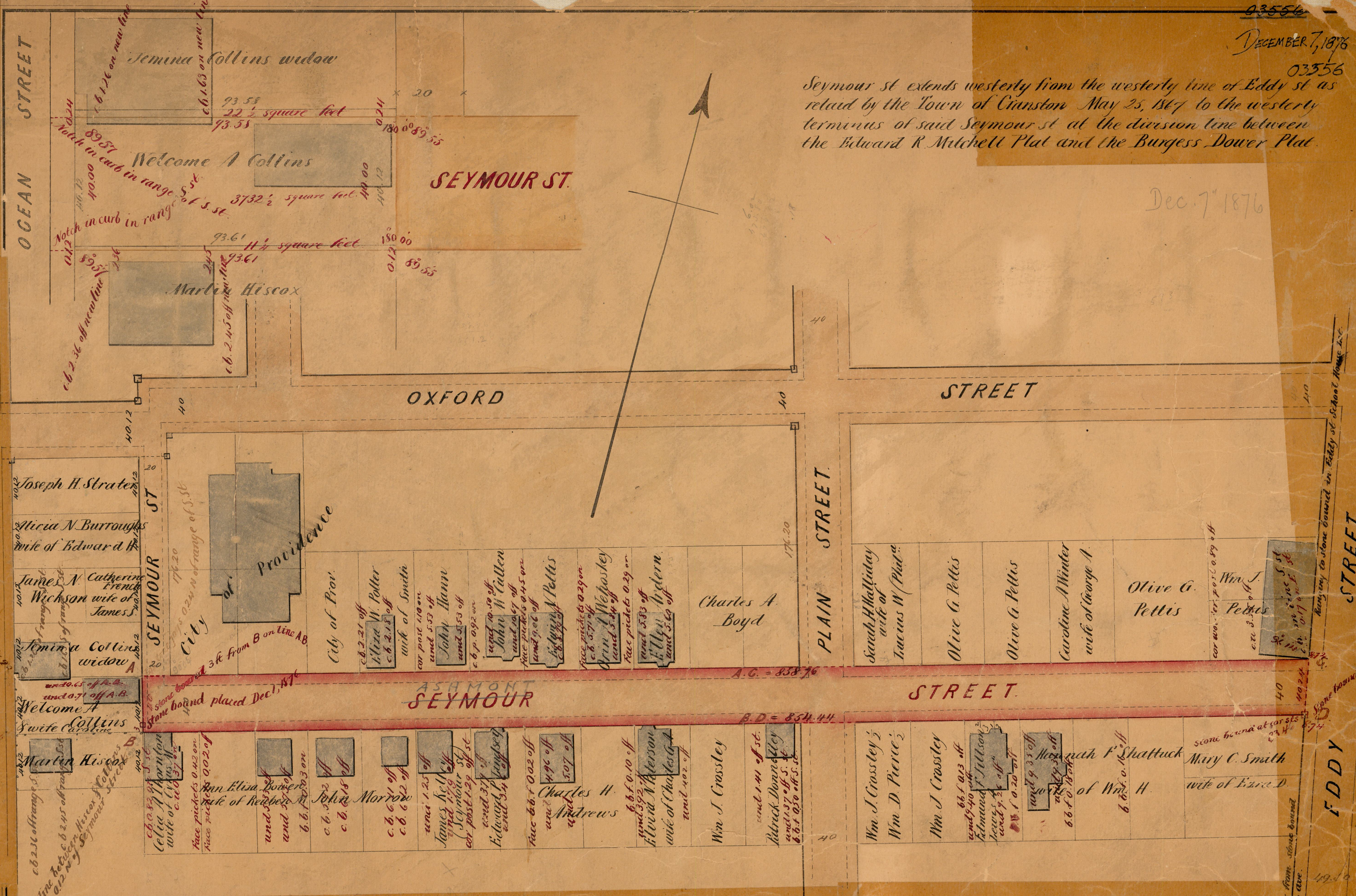
03556

DECEMBER 7, 1876

03556

Seymour st extends westerly from the westerly line of Eddy st as retained by the Town of Cranston May 25, 1867 to the westerly terminus of said Seymour st at the division line between the Edward R. Mitchell Plat and the Burgess Dower Plat.

Dec. 7 1876



OFFICE No. 2935
 DRAWER " 96
 SHEET " A-12

96
 A-12

Compared
 Wm. G. Bremer, Asst. Eng'r.

This line ranges from stone bounded near Eddy street.

Stone bound placed Dec 1, 1876

Boundary to stone bounded in Eddy st School House lot.

Notch in curb on range S. 5. St.

Notch in curb in range S. 5. St.

Notch in curb in range of S. 5. St.

Notch in curb in range of S. 5. St.