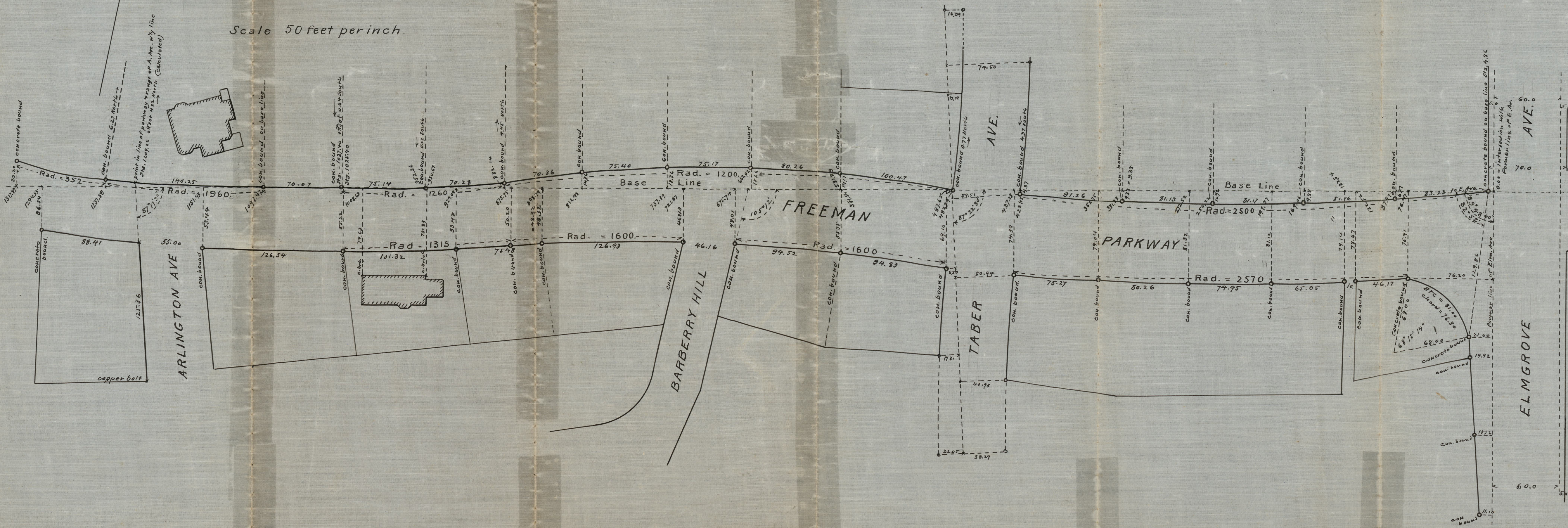


PROVIDENCE, R.I.  
CITY ENGINEER'S OFFICE  
STREET LINE DEPT.  
Aug. 13, 1920  
044566

Plan of a portion of Freeman Parkway showing location of the bounds, which, by the terms of the original plat, define the lines of the parkway. The position of these bounds and their relation to each other is determined by stations upon, and offsets measured at right angles to, a base line intended to be identical with a part of the line "RS" on "Plat No. 1 of Land in Providence, R.I., belonging to John R. Freeman" &c. See plat card #1036 in the Recorder's Office. It is doubtful if continuous curves of the dimensions given by the original plat will precisely agree with the position of the bounds, but separate arcs of the various radii may be run from bound to bound with sufficient accuracy.

Scale 50 feet per inch.



OFFICE No. 21799  
DRAWER " 94  
SHEET " B-51