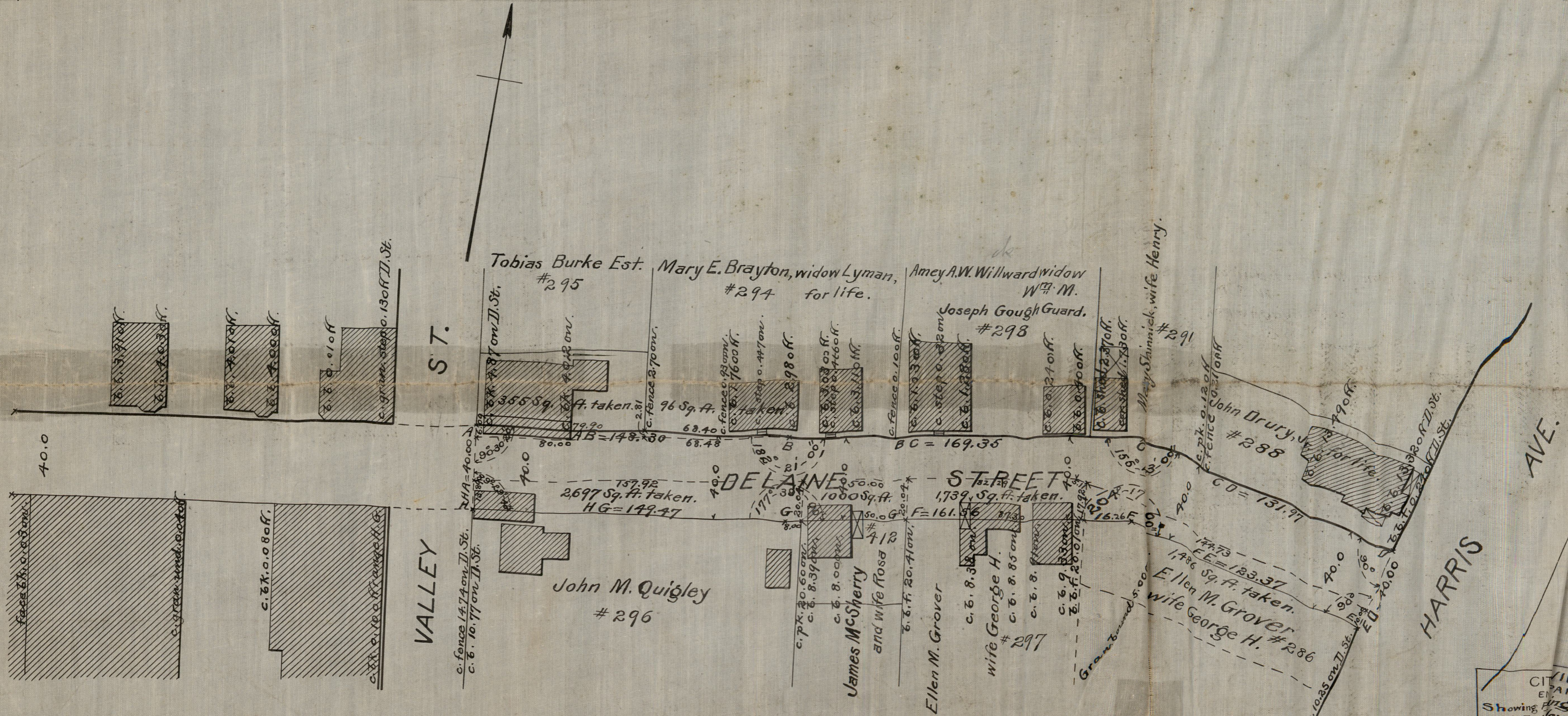


PROPOSED EXTENSION OF
DELAINE STREET
 FROM VALLEY ST. TO HARRIS AVE.



Scale 40 feet per inch.

21-305
 9-4
 B-48

CITY ENGINEER'S OFFICE
 Showing Proposed Extension
 of Delaine Street from Valley St. to Harris Ave.
 Drawn by [Signature]
 Scale 40 feet per inch
 Oct. 18, 1917
 Corrected by [Signature]
 Approved by [Signature] City Eng.