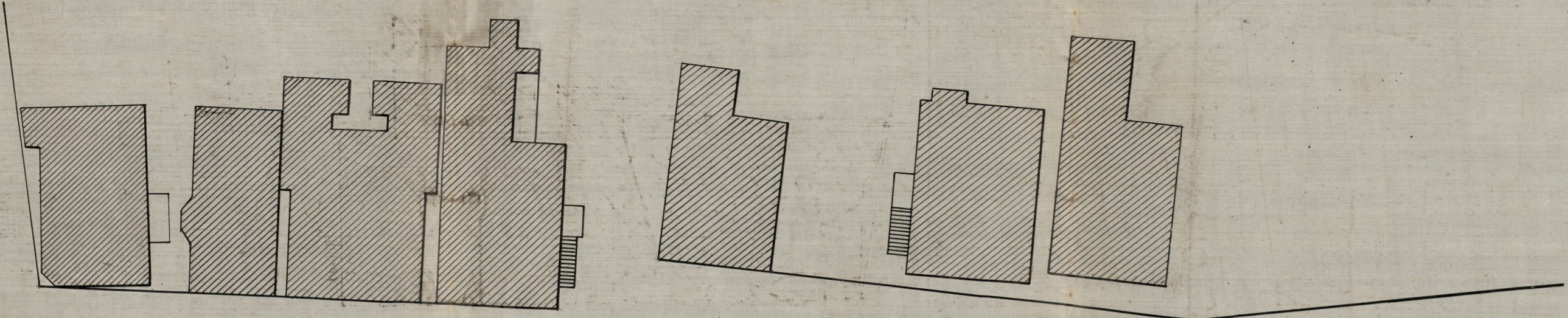
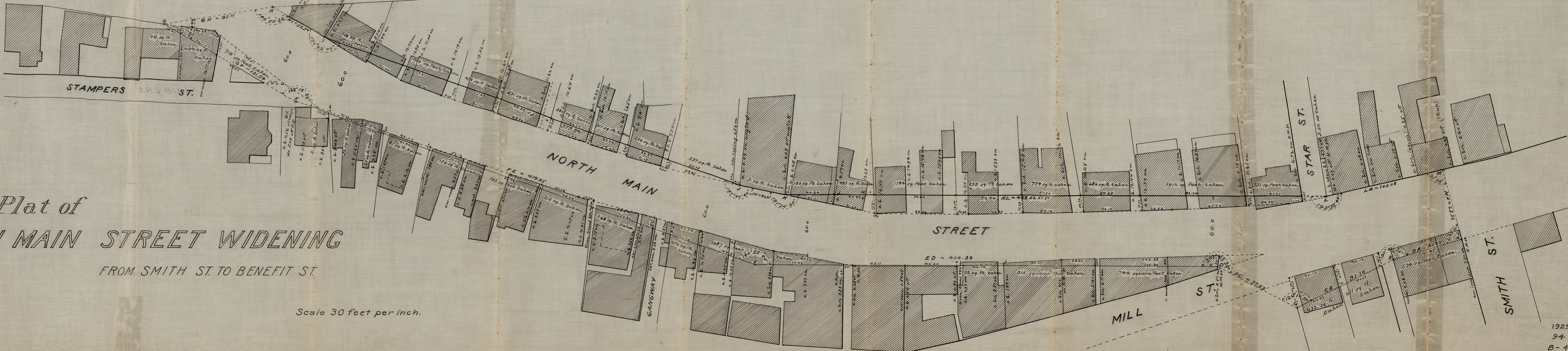


OLNEY ST.



BENEFIT ST.



Plat of
NORTH MAIN STREET WIDENING
FROM SMITH ST. TO BENEFIT ST.

Scale 30 feet per inch.

PROVIDENCE, R.I.
ENGINEER'S OFFICE
STREET LINE DEPT.
Mar. 25, 1913
039286