

NOTE - The territory benefited, is not shown on this tracing

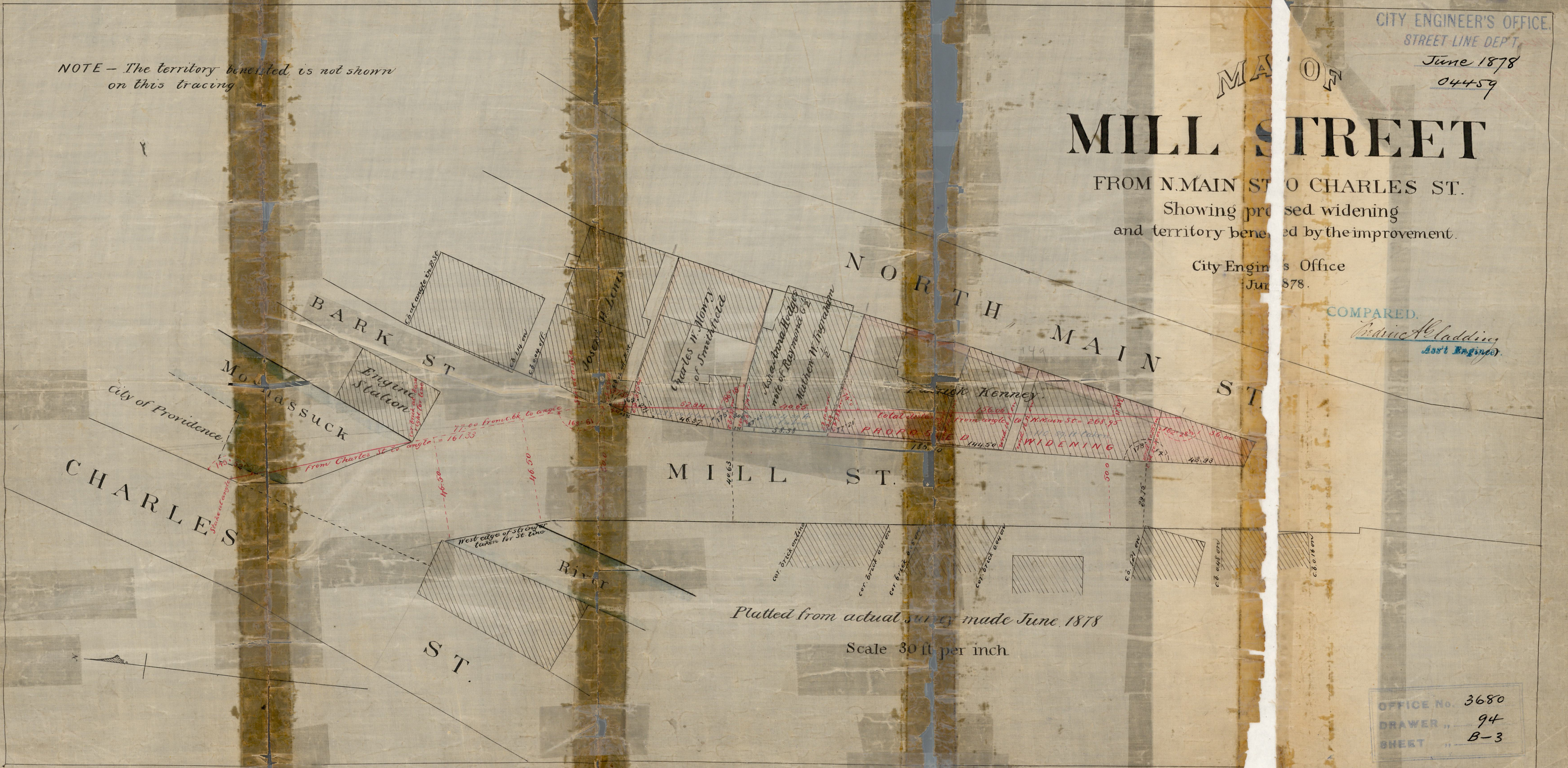
CITY ENGINEER'S OFFICE,
STREET LINE DEPT.
June 1878
04459

MILL STREET

FROM N. MAIN ST. TO CHARLES ST.
Showing proposed widening
and territory benefited by the improvement.

City Engineer's Office
June 1878.

COMPARED.
Frederic A. Cladding
Asst. Engineer.



Platted from actual survey made June 1878

Scale 30 ft per inch

OFFICE No. 3680
DRAWER „ 94
SHEET „ B-3