

Map of FLORENCE AND MALDEN STREETS

SCALE 40 FT TO AN INCH
MEAS^r IN U.S. STANDARD FT.

CITY ENGINEER'S OFFICE
STREET LINE DEPT.
Dec. 29, 1874
02511

AS SURVEYED,
BOUNDED & MARKED OUT BY

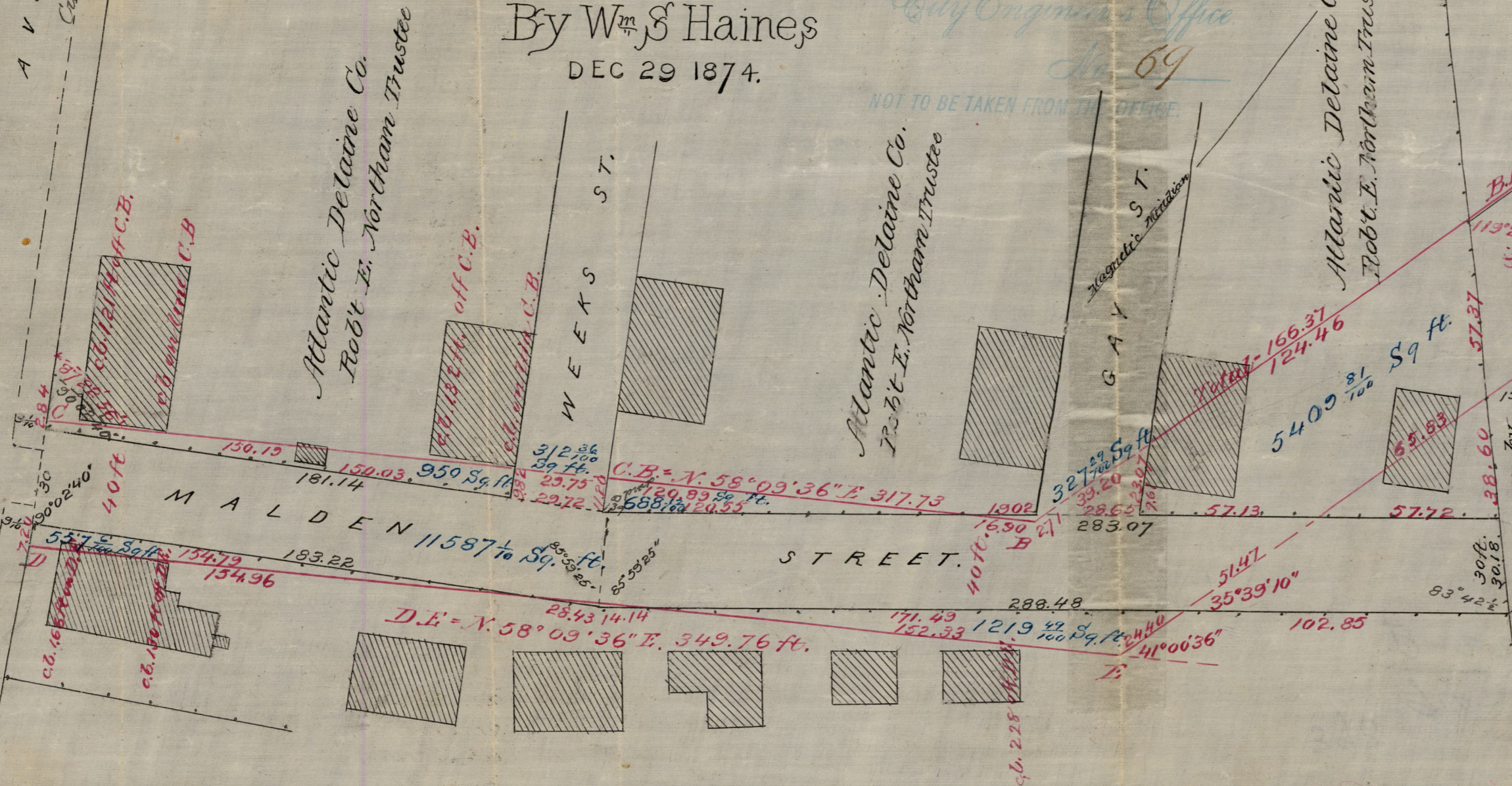
Obadiah Brown, Eden Perrin & W^m S Haines
Under a Commission from the Hon^l Board of
Aldermen dated Nov. 2^d 1874

SURVEYED & DRAWN

By W^m S Haines
DEC 29 1874.

STREET LINES
City Engineer's Office
Dec 69
NOT TO BE TAKEN FROM THE OFFICE.

AVENUE
Chestnut



Lines figures &c. in red ink show the boundary lines of Florence and Malden Streets as surveyed bounded and marked out by the Commissioners.

This Map forms a part of our Report to the Hon^l Board of Aldermen of the City of Providence signed by us on even date herewith.

Providence Dec. 30th 1874

Obadiah Brown
Eden Perrin
W^m S Haines } Commissioners.

Atlantic Delaine Company Robt E. Northam Trustee
Total Area of land belonging to the Atlantic Delaine Co required for Malden & Florence Sts
Within the present lines of Malden Weeks & Gay Sts 12226.75 Sq. ft.
Outside " " 8824.48
21051.23