

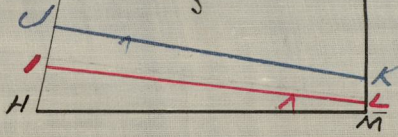
CITY ENGINEER'S OFFICE
 STREET LINE DEPT.
 March 1879
 04895

GOVERNOR ST.
 Previous to 1847

Samuel Dexter
 & Wife.

50.00

S
 T



45.13

W I L L I A M S

45.13

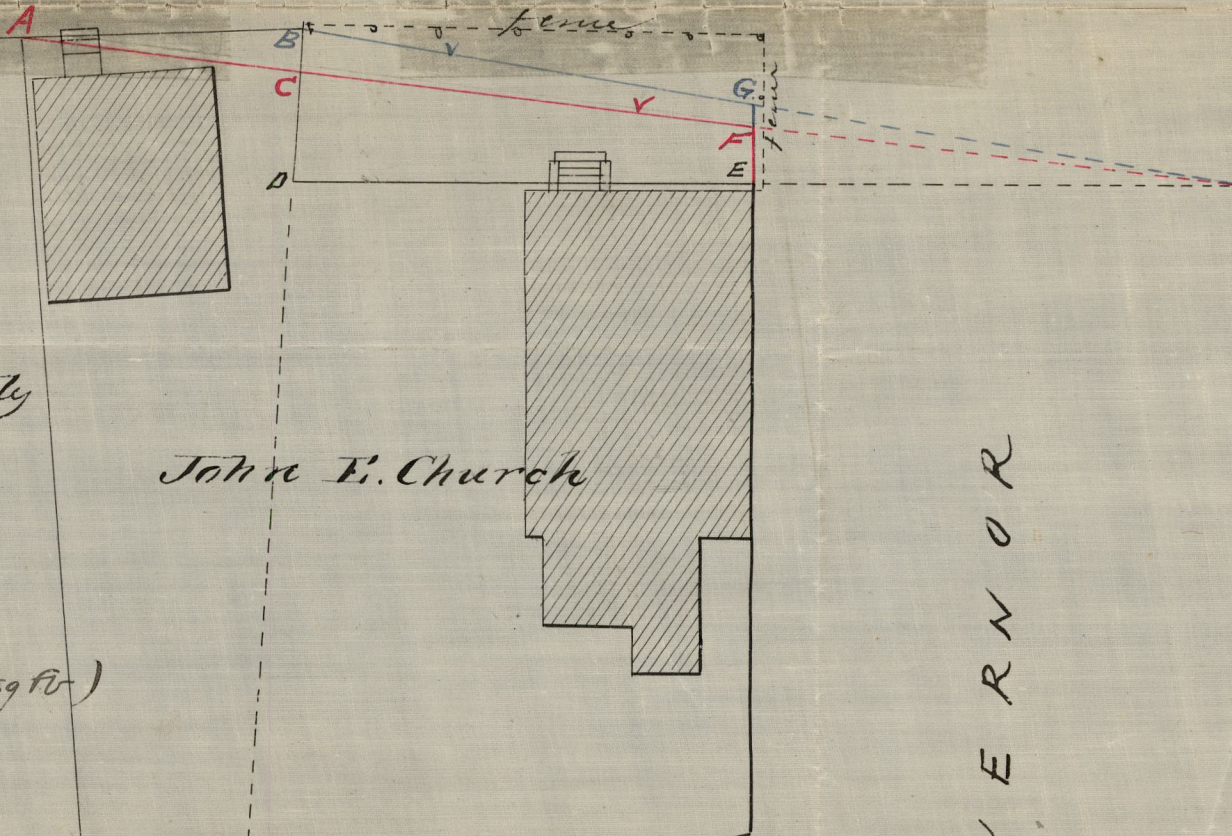
45.13

X Y

50.00

S T.

50.00



City Engineer's Office
 March 1879

Scale 20 ft per inch

Areas are given approximately

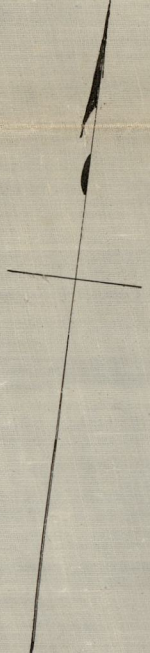
- Area BDEG = 569 Sq Ft.
- " CDEF = 407 " "
- " ABC = 67 " "
- " JHML = 108 " "
- " JHMK = 222 " "
- (" as finally received 12359 ft)
 H.E.S June 1881.

John E. Church

GOVERNOR

NOTE

Williams St. from X to Y is not received
 The lines of Williams St. from Hope to
 Governor St. (1847) are indefinite.



J O H N

S T.

50.00

OFFICE No. 4065
 DRAWER " 94
 SHEET " B-16