

Knowles St.

Halhaway Street

Bissell Street

Spooer Street

Sawyer Street

Street

Street

Street

Elmwood Avenue

Thurston

Dixon

Hamlin

Stamford Avenue

Peter Avenue

G.B. 0.12 on E. Ave.

G.B. 0.12 on E. Ave.

G.B. 0.12 on E. Ave.

G.B. 0.12 on E. Ave.

G.B. 0.12 on E. Ave.

G.B. 0.12 on E. Ave.

G.B. 0.12 on E. Ave.

200.00

200.00

200.00

200.00

200.00

200.00

200.00

200.00

200.00

200.00

200.00

200.00

200.00

200.00

200.00

200.00

200.00

200.00

200.00

200.00

200.00

200.00

200.00

200.00

200.00

200.00

200.00

200.00

200.00

200.00

200.00

200.00

200.00

200.00

200.00

200.00

200.00

200.00

200.00

200.00

200.00

200.00

200.00

200.00

200.00

200.00

200.00

200.00

200.00

200.00

200.00

200.00

200.00

200.00

200.00

200.00

200.00

200.00

200.00

200.00

200.00

200.00

200.00

200.00

200.00

200.00

200.00

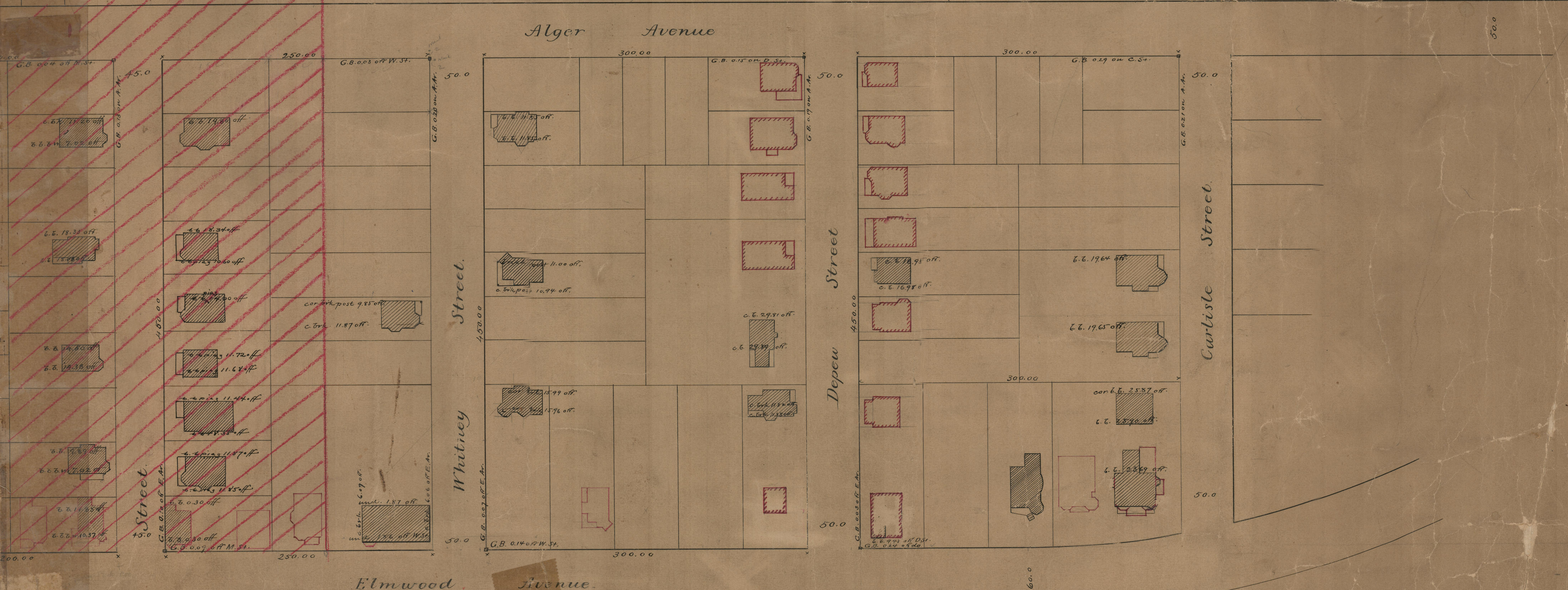
200.00

200.00

200.00



PROVIDENCE, R.I.  
CITY ENGINEER'S OFFICE  
STREET LINE CEPT.  
Sept 27 1894  
023099



Map showing  
Lines of Streets and Avenues in  
Auburndale Plat.  
Scale 50 feet per inch.  
Note: These offsets were taken in accordance with  
measurements as shown. The granite bound at the  
south east corner of Elmwood and Park aves.  
taken for line of Elmwood ave. Cross streets  
with reference to granite bound 87.93 feet  
south of McKinley street.

OFFICE No. 12365  
DRAWN 94  
SHEET A-32

OFFICE No. 12365  
DRAWN 94  
SHEET A-32

E-4  
hb

①