

Approximate meridian

West River Street

Melden Street

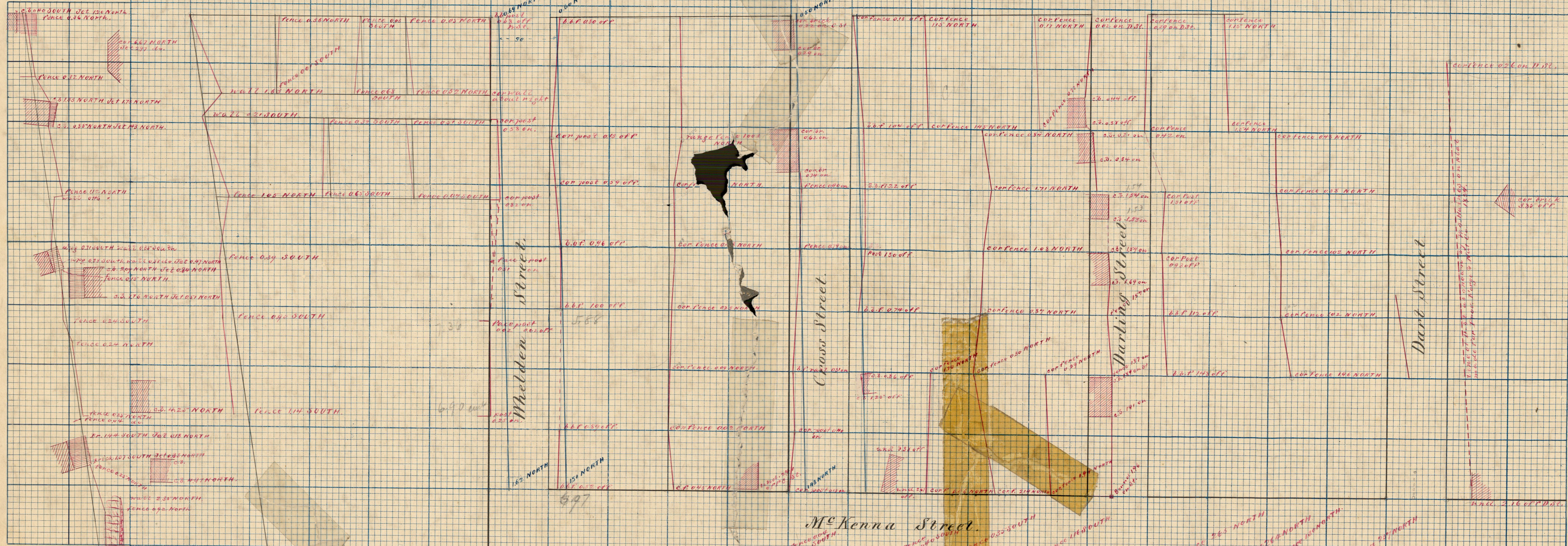
McKenna Street

CROSS SECTION PAPER Plate No 1.

W. H. WATSON & SONS
Engineers, Architects
SURVEYORS
36 Cedar St.
NEW YORK

Scale 1/2" = 1' Vertical
Horizontal

OFFICE No. 279
DRAWER " 94
SHEET " A



Blue lines on Meldren St show line as given on plat in C. Clerk's office made for town of North Providence by G. B. Ross

Blue lines on Cross St. show line as given by layout of Cross St. established by Town of North Providence 1883

W. S. 14 line comm 0.16 on