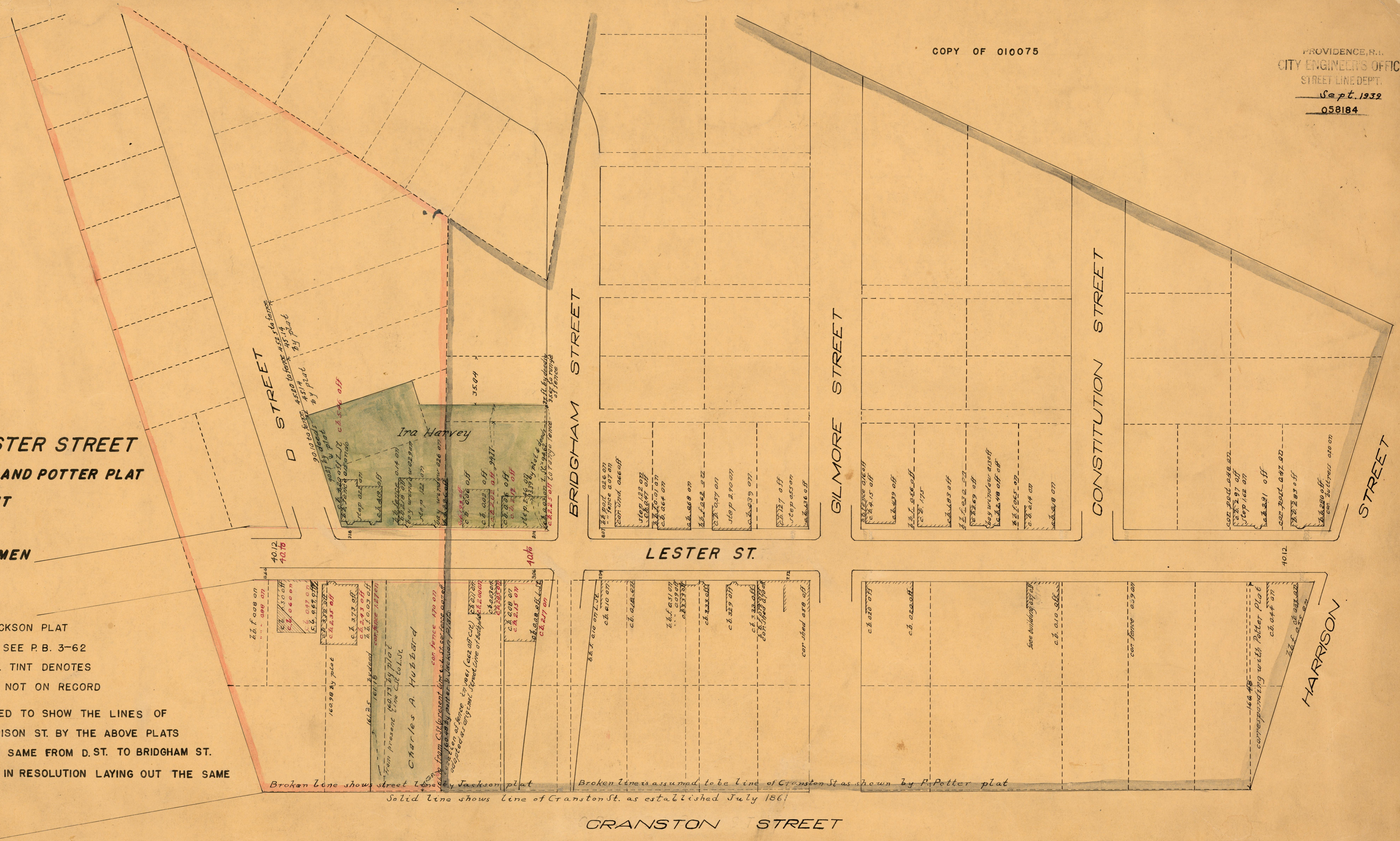


COPY OF 010075

PLAT
SHOWING LINES OF LESTER STREET
AS PLATTED ON JACKSON PLAT AND POTTER PLAT
ALSO AS LAID OUT
BY THE
BOARD OF ALDERMEN
AUG. 1856

NOTE AREA SHADED PINK DENOTES THOMAS JACKSON PLAT
 MADE BY S. B. CUSHING MAY 1845 SEE P. B. 3-62
 THE AREA SHADED WITH NEUTRAL TINT DENOTES
 FERDINAND POTTER PLAT 1843 NOT ON RECORD
 THE BLACK OFFSETS ARE INTENDED TO SHOW THE LINES OF
 LESTER ST. FROM D. ST. TO HARRISON ST. BY THE ABOVE PLATS
 THE RED OFFSETS SHOW LINES OF SAME FROM D. ST. TO BRIDGHAM ST.
 AS FIXED BY PLAT REFERRED TO IN RESOLUTION LAYING OUT THE SAME



Broken line shows street line by Jackson plat
 Solid line shows line of Cranston St. as established July 1861

Scale 40 feet per inch

6