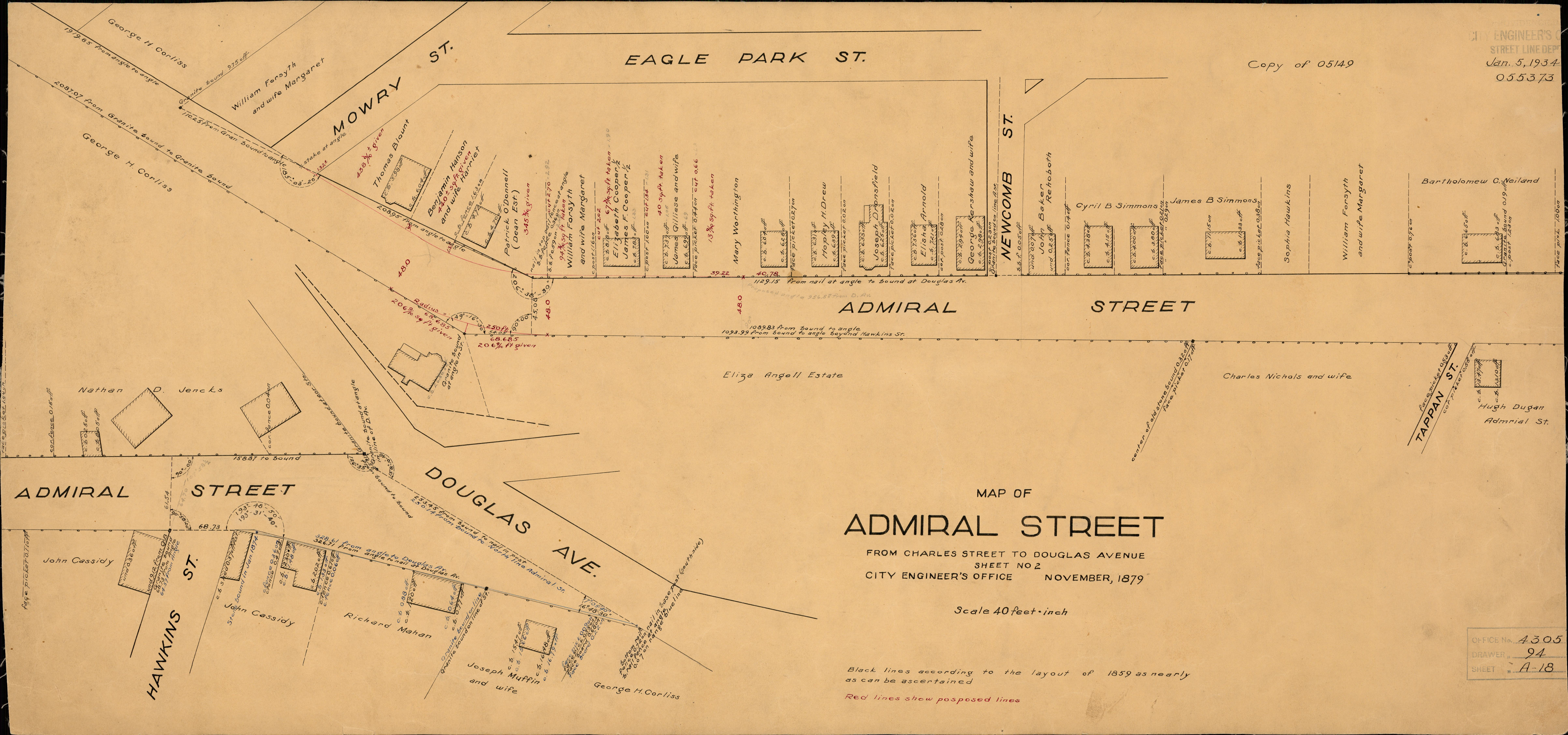


Copy of 05149



MAP OF  
**ADMIRAL STREET**

FROM CHARLES STREET TO DOUGLAS AVENUE  
SHEET NO 2  
CITY ENGINEER'S OFFICE NOVEMBER, 1879

Scale 40 feet = inch

Black lines according to the layout of 1859 as nearly as can be ascertained  
Red lines show proposed lines

OFFICE No. 4305  
DRAWER 94  
SHEET A-18