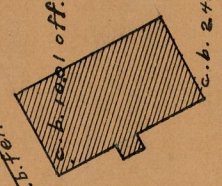


DOUGLAS

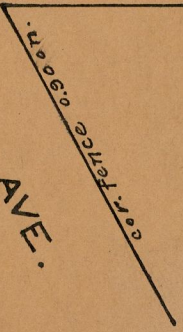


b.b. fence used for line
c.b. 24.90 off.

30.0

ALICANT

AVE.



corn. fence 0.90 on.



c.b. 1.17
c.b. 1.0 off.

corn. fence 1.18 on.

VETO ST.



b.b. fence used for line.
c.b. 4.60



fence post on line.
c.b. 7.68 off.

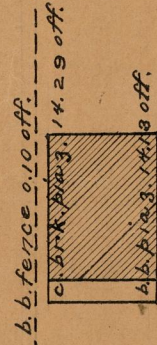
c. post 0.46 on (up 5 ft)

30.0

STREET.

face fence 1.65 on.

face fence 2.53 on.
face fence 0.57 off.



b.b. fence 0.10 off.
corn. fence 1.429 off.
b.b. fence 3.1418 off.

b.b. fence 0.15 on.
fence post 0.12 on.
c.b. 4.69 off.

c.b. 4.74 off.
fence post on line.

fence post on line.
c.b. 5.54 off.
fence post 5.40 off.

fence post on line.
face fence 3.80 on.

fence post 7.20 on.