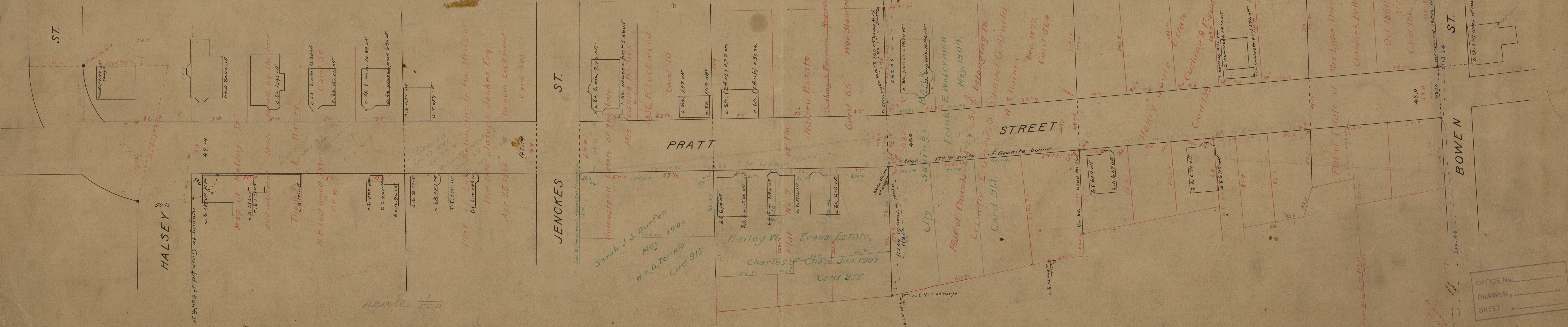


The portion of Pratt St. shown hereon originated on a number of independent plats ordered by various owners and made at different dates by different surveyors, who in some cases, used different standards of measurement. The purpose of this map is to define lines which will combine and adjust the general intent of the plats.

The section from Halsey St. to Jenckes St. was declared a public highway Nov. 1, 1874, a plat (81%) accompanying the resolution. This fixes the street as 48 feet wide from Jenckes St. to Halsey St. and at right angles with the latter, and this map conforms to the terms, using as land marks, stone bounds, as indicated. The location of the section running north from Bowen St. to the angle is governed by notes from "Plat of Estate of Lydia W. Dorr" and "Plat of Parcels belonging to Green and Arnold," measurements being taken from Congdon St. westerly to points located by said plats and the variation (surplus) allotted. The westerly line is thus located and intersects the stone bound in the south line of the Green and Arnold land and the easterly line is made 48 ft. U.S. Standard, from and parallel with it.



PROVIDENCE, R.I.  
CITY ENGINEER'S OFFICE  
STREET LINE DEPT.

Apr. 3, 1916  
046778

OFFICE No. \_\_\_\_\_  
DRAWER " \_\_\_\_\_  
SHEET " \_\_\_\_\_

93

ST.

BOWEN

PRATT

JENCKES

ST.

HALSEY

scale 500