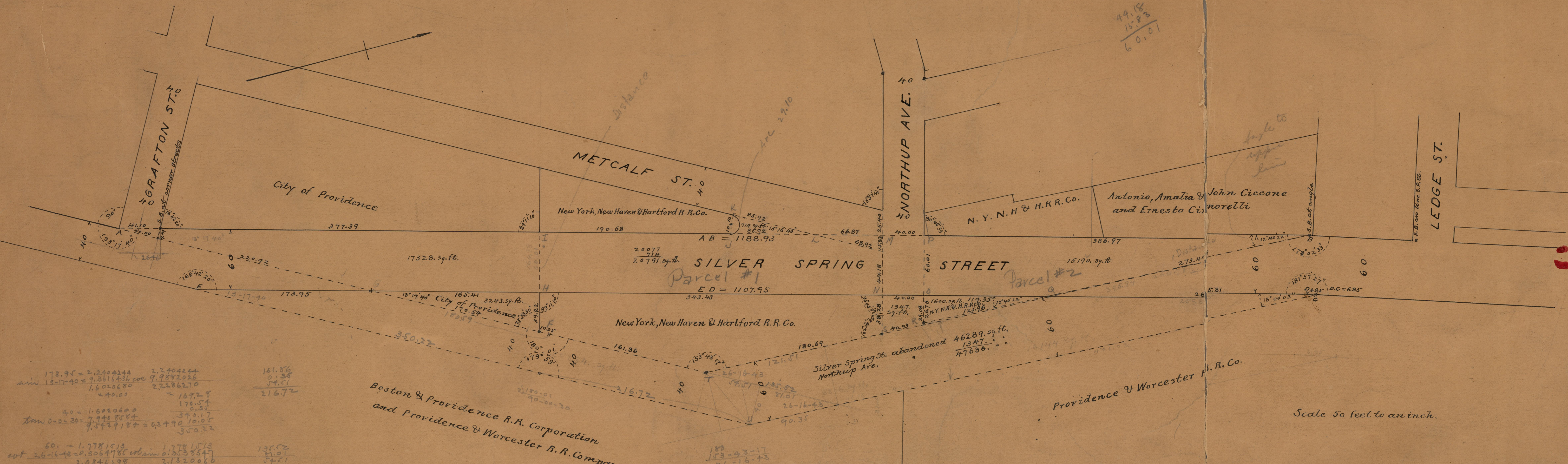


76-42-22 = 8.37334
 13-17-40 = 2.37128 = 59.06
 25 = 2.07712 = 20.55
 47-10 = 22.522756



$\frac{49.18}{15.83} = 60.07$

$173.95 = 2.2404244$
 $13-17-40 = 2.37128$
 $25 = 2.07712$
 $47-10 = 22.522756$
 $40 = 1.6020600$
 $26-16-43 = 0.3064785$
 $40 = 1.6020600$
 $26-16-43 = 0.3064785$
 $40 = 1.6020600$
 $26-16-43 = 0.3064785$

Boston & Providence R.R. Corporation
 and Providence & Worcester R.R. Company.

1188.93
 1842.14
 2203.107
 1015.835
 86.775
 928.56
 1107.95
 268.81
 842.14
 173.95
 668.19

Scale 50 feet to an inch.

objects Abandoned
 20394
 6826
 2455
 16744
 1347
 47636 sq. ft.
 Area land taken
 City 17328 R.R. 20791
 Conditionally 3243 15797
 20571 sq. ft. 36987 sq. ft.

WELLS & ESCOBAR CO. SIMPLEX