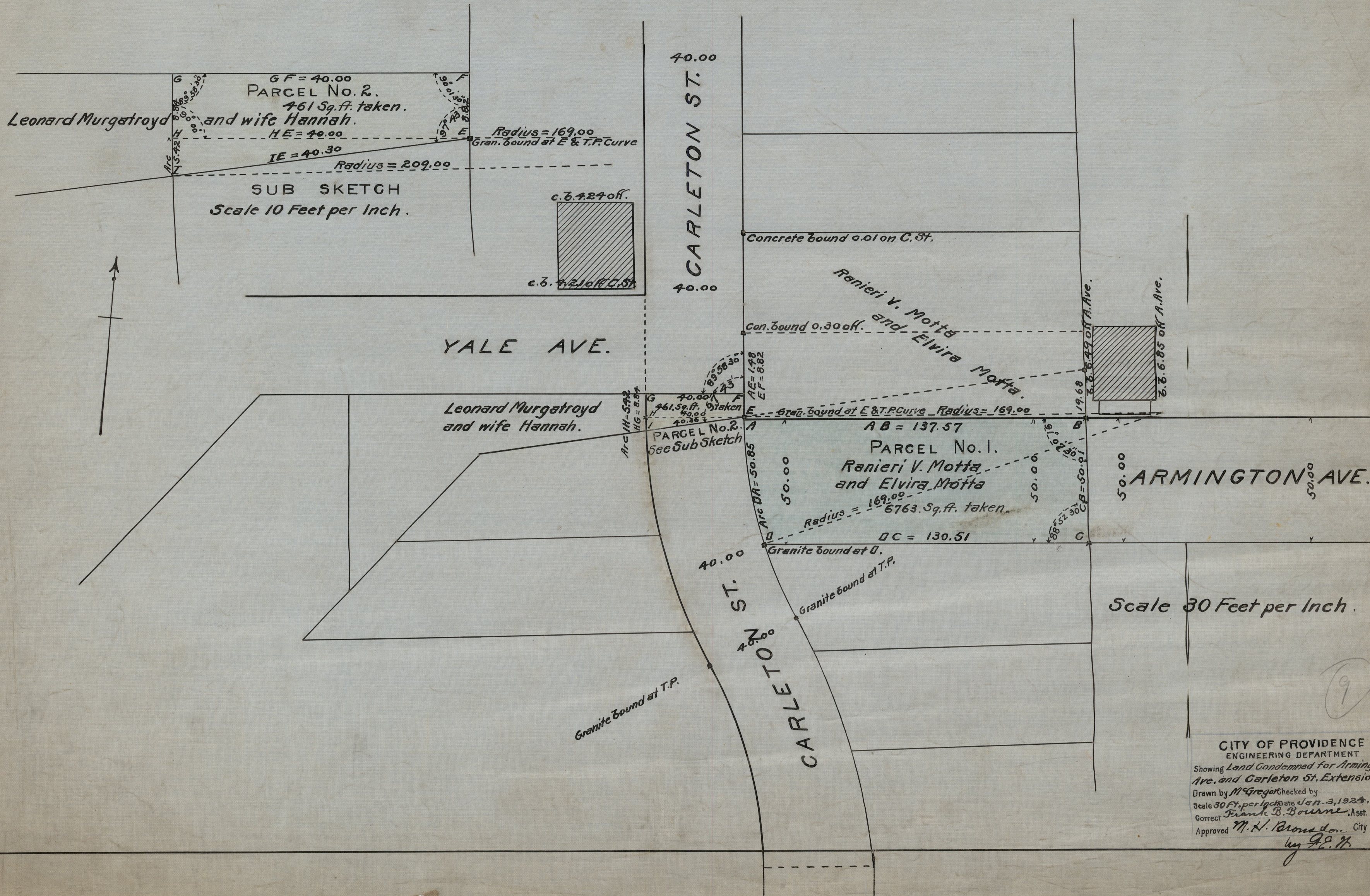


STATEMENT.
 PLAT OF LAND CONDEMNED
 for highway purposes pursuant to the provisions of Chapter 2118 of the Public Laws,
 passed by the General Assembly at its January Session A.D. 1921, and by, and in
 accordance with the joint Resolution of the City Council of the City of
 Providence numbered 7 approved Jan. 8, 1924.

Mayor of the City of Providence.



CITY OF PROVIDENCE
 ENGINEERING DEPARTMENT
 Showing Land Condemned for Armington
 Ave. and Carleton St. Extensions.
 Drawn by M. H. Brown checked by
 Scale 30 Ft. per Inch date Jan. 3, 1924.
 Corrected by Frank B. Bourne, Asst. Eng.
 Approved M. H. Brown, City Eng.
 by G. N.