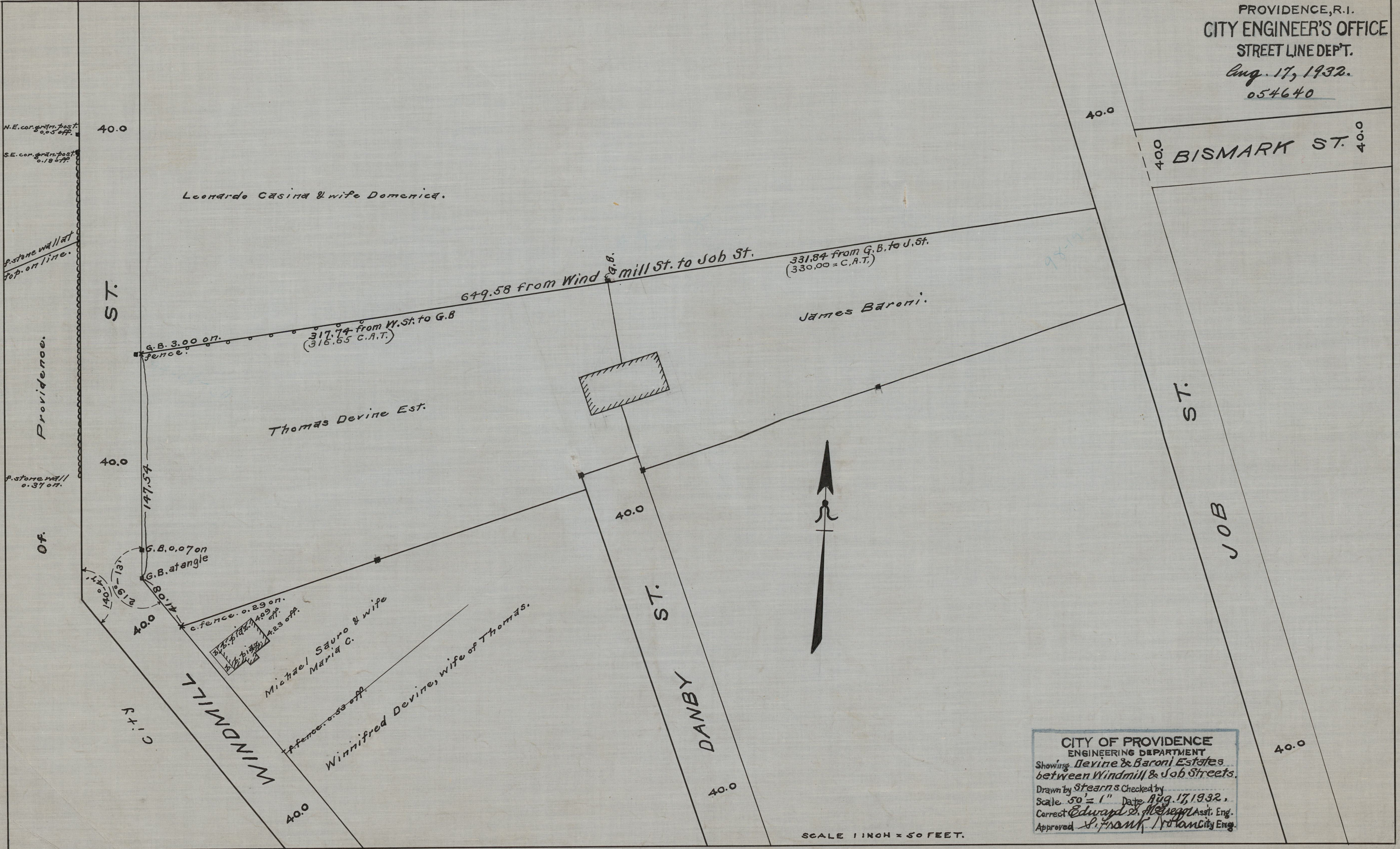


PROVIDENCE, R.I.
 CITY ENGINEER'S OFFICE
 STREET LINE DEPT.
 Aug. 17, 1932.
 054640



CITY OF PROVIDENCE
 ENGINEERING DEPARTMENT
 Showing Devine & Baroni Estates
 between Windmill & Job Streets.
 Drawn by Stearns Checked by _____
 Scale 50' = 1" Date Aug. 17, 1932.
 Correct Edward S. Allegretti, Asst. Eng.
 Approved S. Frank Nolan, City Eng.

SCALE 1 INCH = 50 FEET.