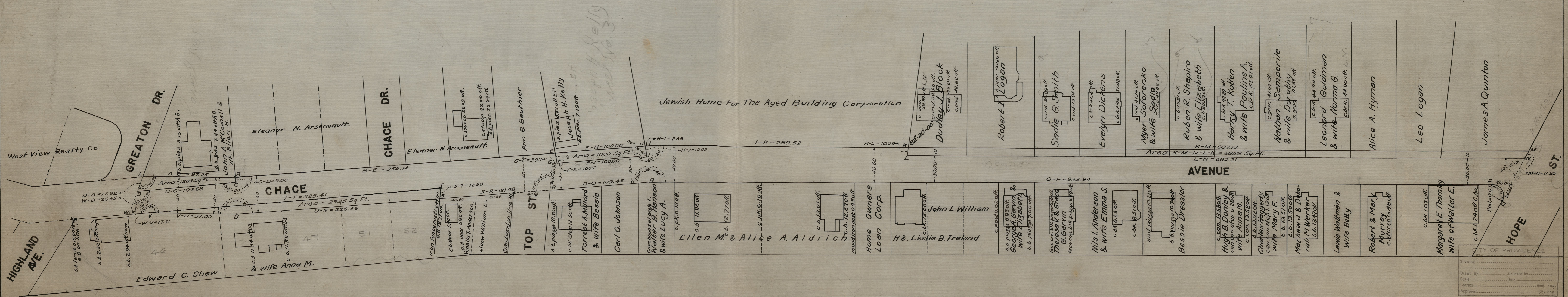


STATEMENT PLAT OF LAND CONDEMNED

PROVIDENCE, R. I.
CITY ENGINEER'S OFFICE
CITY PROPERTY DEPT

PURSUANT TO THE PROVISIONS OF CHAPTER 2118 OF THE PUBLIC LAWS ENTITLED, "AN ACT RELATING TO THE TAKING OF LAND IN THE CITIES OF PROVIDENCE AND PAWTUCKET FOR HIGHWAY PURPOSES," PASSED BY THE GENERAL ASSEMBLY AT ITS JANUARY SESSION A.D. 1921, AND BY AND IN ACCORDANCE WITH THE JOINT RESOLUTION OF THE CITY COUNCIL OF THE CITY OF PROVIDENCE NUMBERED _____ APPROVED _____ CONDEMNING CERTAIN LAND FOR HIGHWAY PURPOSES.

Mayor of the City of Providence



CITY OF PROVIDENCE
ENGINEERING DEPARTMENT
Showing _____
Drawn by _____ Checked by _____
Scale _____ Date _____
Corrected _____ Assi. Eng. _____
Approved _____ City Eng. _____