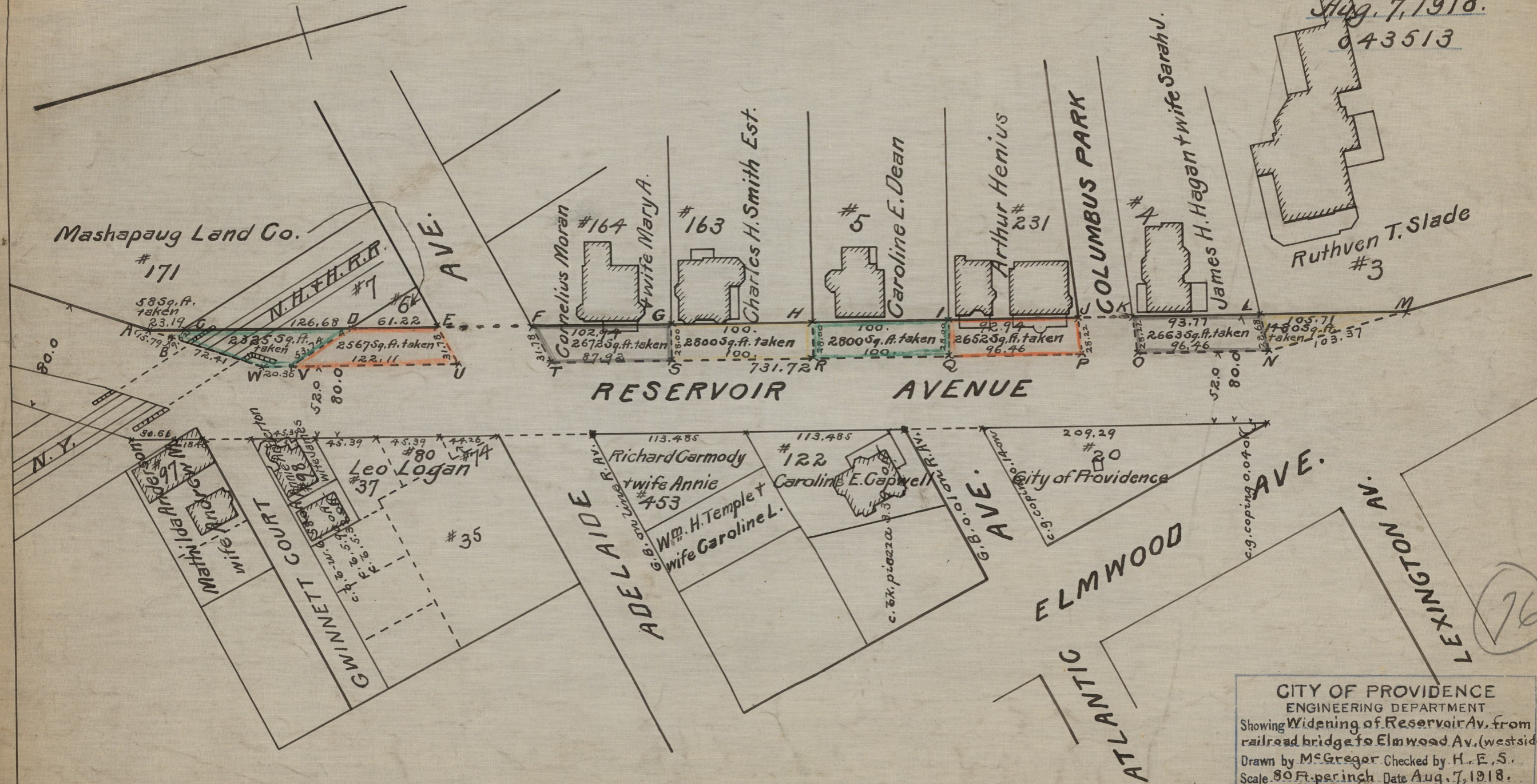


PROPOSED WIDENING

STREET LINE DEPT.
Aug. 7, 1918.
043513



CITY OF PROVIDENCE
ENGINEERING DEPARTMENT
Showing Widening of Reservoir Av. from
railroad bridge to Elmwood Av. (westside)
Drawn by M. S. Gregor. Checked by H. E. S.
Scale 80 Ft. per inch. Date Aug. 7, 1918.
Corrected by *T. B. Sherman* Asst. Eng.
Approved *H. J. Donahoe* City Eng.

76

76