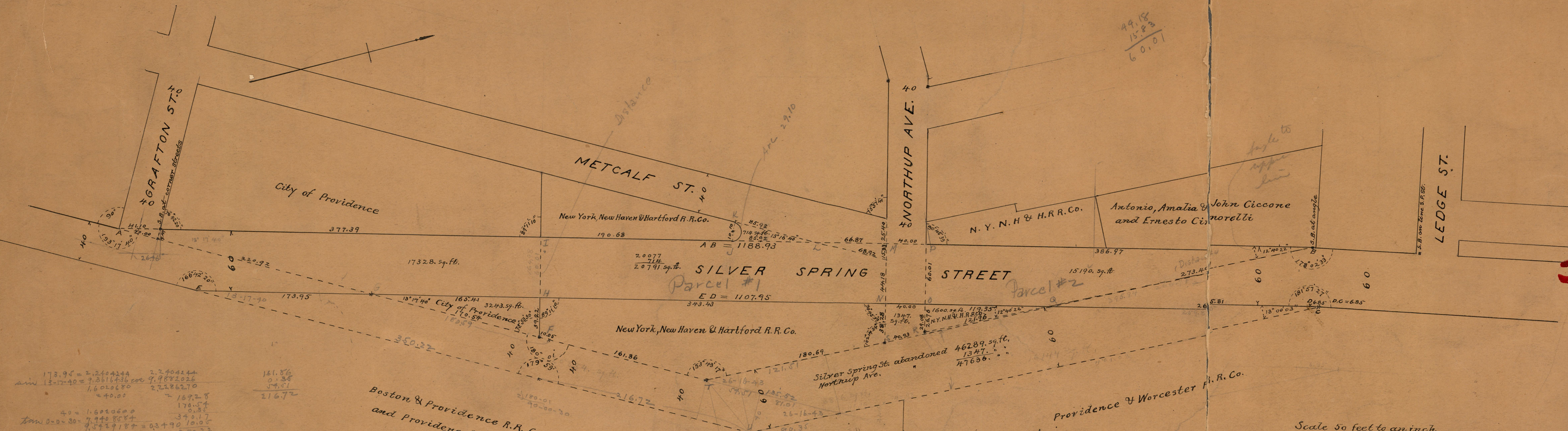


16-42-20
 13-17-40
 25
 2.373334
 1.37128 = 5906
 1.10205
 22.55255



$$\begin{array}{r} 49.18 \\ 15.83 \\ \hline 60.01 \end{array}$$

$$\begin{array}{r} 173.95 = 2.2404244 \\ \sin 13-17-40 = 0.2316736 \\ \cos 13-17-40 = 0.9722827 \\ \hline 160.20680 \\ + 40.00 \\ \hline 200.20680 \\ \hline 169.25 \\ 170.54 \\ 0.33 \\ 39.07 \\ 10.05 \\ \hline 350.22 \end{array}$$

$$\begin{array}{r} 161.86 \\ 0.35 \\ 54.51 \\ \hline 216.72 \end{array}$$

$$\begin{array}{r} 40 = 1.6020600 \\ \tan 0-0-30 = 0.5773503 \\ \hline 23.08184 \\ + 0.3490 \\ \hline 350.22 \end{array}$$

$$\begin{array}{r} 60 = 1.7781513 \\ \cot 26-16-43 = 0.3064785 \\ \hline 2.0846298 \\ + 121.51 \\ \hline 135.52 \end{array}$$

$$\begin{array}{r} 40 = 1.6020600 \\ \cot 26-16-43 = 0.3064785 \\ \hline 1.9085385 \\ + 81.01 \\ \hline 90.347 \end{array}$$

Boston & Providence R.R. Corporation
 and Providence & Worcester R.R. Company.

$$\begin{array}{r} 1188.93 \\ 842.14 \\ \hline 2031.07 \\ 1015.535 \\ 86.775 \\ \hline 928.56 \end{array}$$

$$\begin{array}{r} 1107.95 \\ 265.81 \\ \hline 842.14 \\ 173.95 \\ \hline 668.19 \end{array}$$

Scale 50 feet to an inch.

of Streets Abandoned
 20884
 6806
 2455
 18144
 1847
 47636 sq. ft.

Area land taken
 City 17328 sq. ft. R.R. 20791 sq. ft.
 Conditionally 3243 sq. ft. 4429 sq. ft.
 20571 sq. ft. 25220 sq. ft.