

DOUGLAS



AVE.

30.0

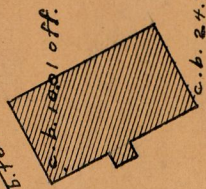
ALICANT

STREET.

30.0

VETO ST.

--- b. fence used for line.

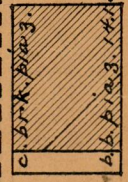


c. b. 24.90 off.

--- face fence 1.65 on.

--- face fence 2.53 on.
--- face fence 0.57 off.

--- b. b. fence 0.10 off.



c. b. b. fence 14.29 off.

b. b. fence 3.74 on off.

--- b. b. fence 0.15 on.

--- fence post. 0.12 on.

c. b. 4.69 off.

c. b. 4.74 off.

--- fence post. on line.

--- fence post. on line.

c. b. 5.54 off.

c. b. 5.40 off.

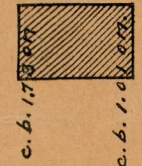
--- fence post. 0.08 off.

--- face fence on line.

--- face fence 3.80 on.

--- fence post. 7.20 on.

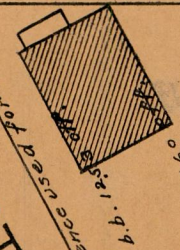
--- c. b. fence 0.90 on.



c. b. 1.73 on

c. b. 1.00 on

--- c. b. fence 11.80 on.



c. b. 13.50 on

b. b. 4.60 on

--- face fence 1.18 on.

c. b. 7.68 off.



--- c. post. 0.46 on (up 5 ft)