

Manning and Waterman Sts. from Governor St. and Cooke St. from George St. to Angell St.

St. were received upon petition of the owners Dec. 11, 1848, without plat reference or accurate description. At the date quoted the "Plat of Land in the Easterly part of Providence belonging to Mrs. E. B. Rogers" (Card 89, Recorder's Office, date June 1846, recorded Feb. 1847) furnished the only information of record concerning the location of these streets. A survey and traverse of the area included by the present lines of Angell, Governor, George and Hope Sts. indicates that the Rogers Plat was measured by U.S. Standard, and the northerly line of Waterman St. has been fixed by measurements by that standard from the south line of Angell St. along Hope and Governor Sts. respectively. Waterman St. is 50 feet wide and Manning St. is parallel with and 275.67 feet southerly therefrom. This leaves an apparent excess of about 5 inches between Manning and George Sts. at Governor St. tapering to nothing at Hope St. The present lines of George St. were fixed in 1883. The lines of Cooke St. are defined by the bound at the N.W. corner of Cooke and Manning Sts. and the bound at the S.E. corner of Cooke and Angell Sts. See notes in Field book.

Outline Survey, Sept. 1618-88-9

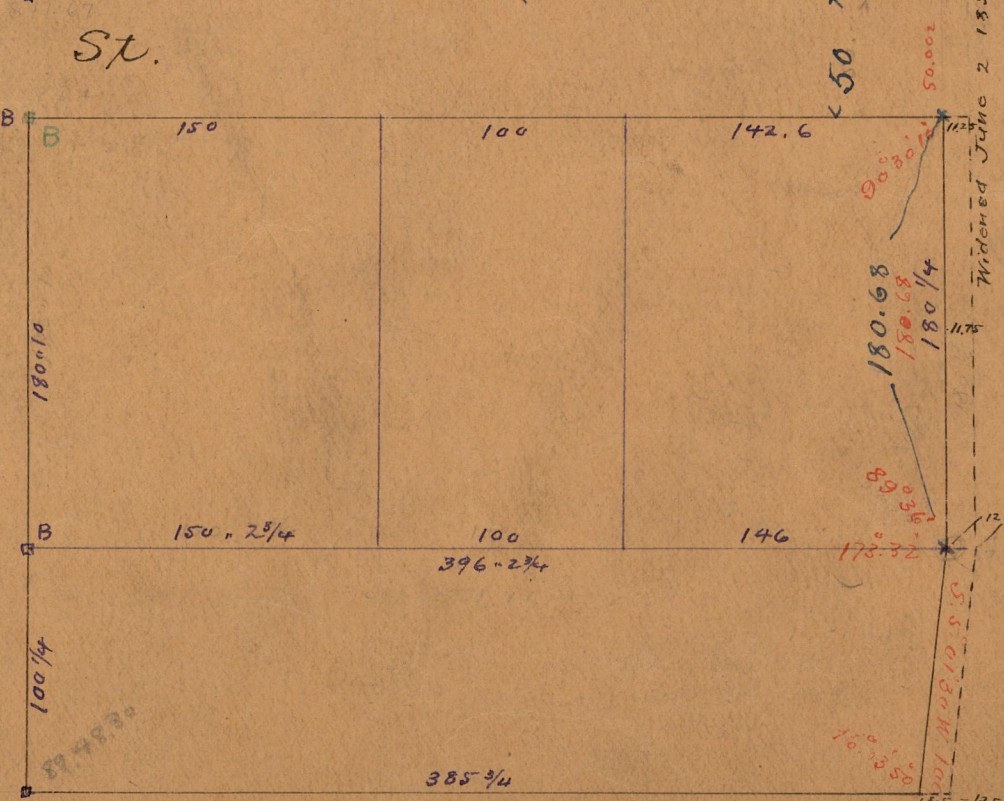
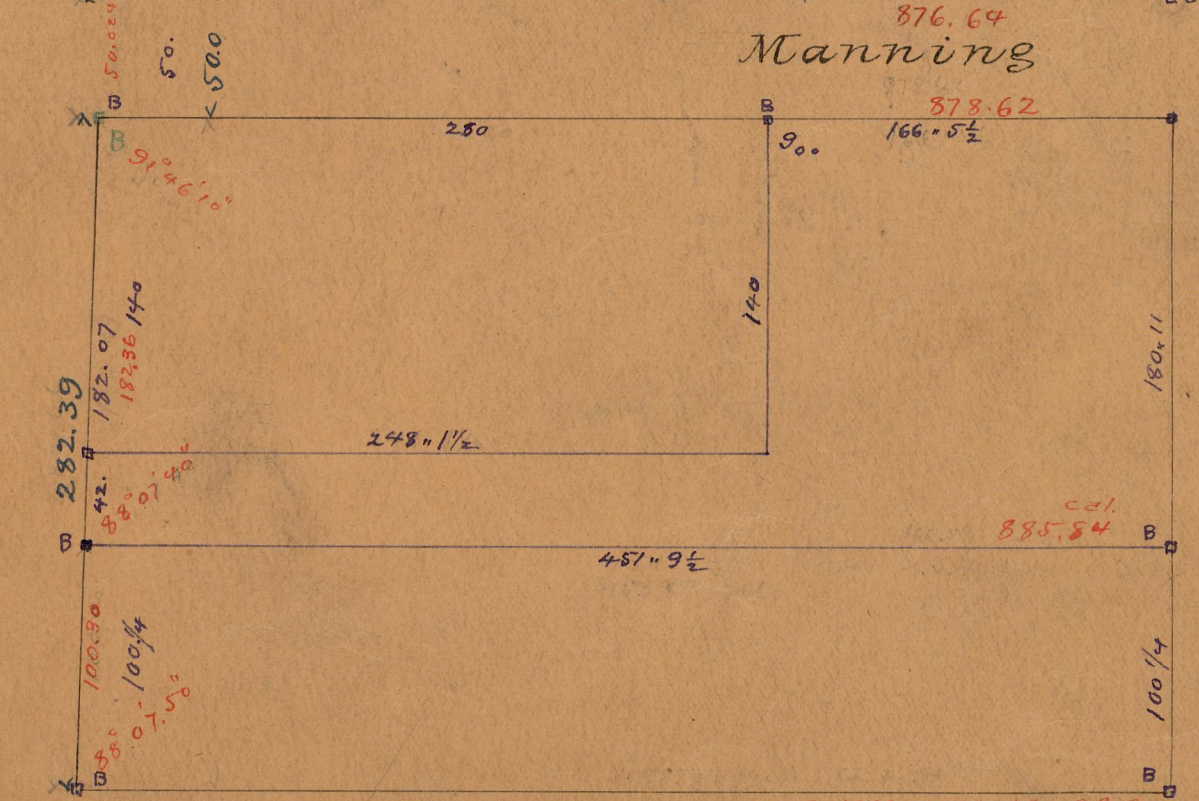
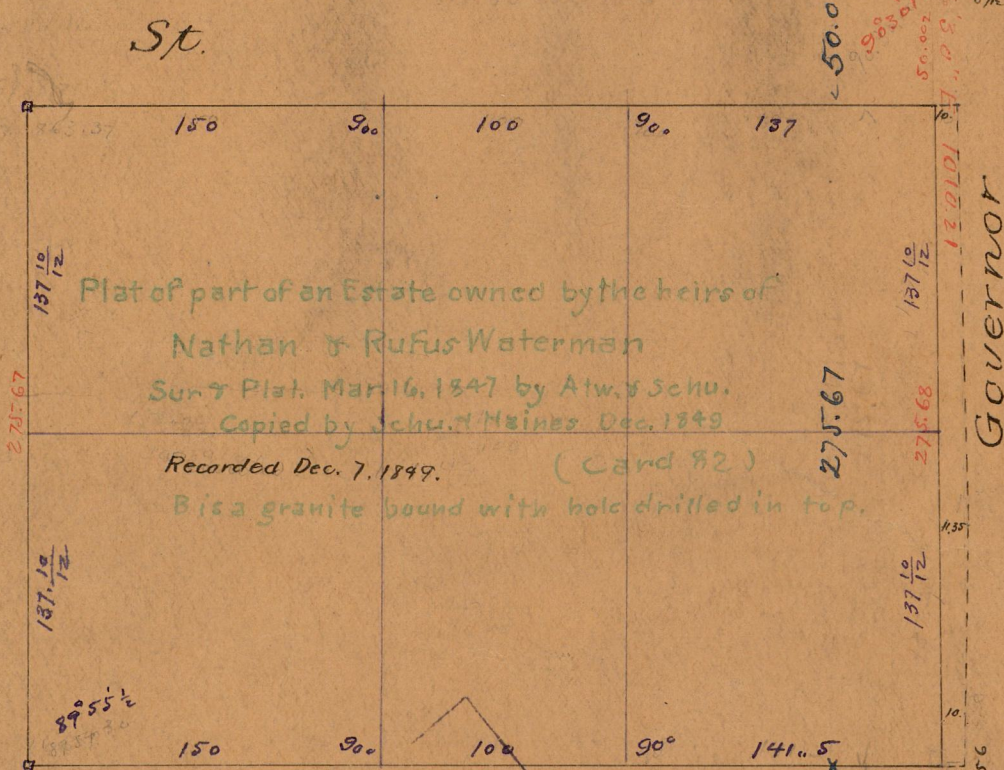
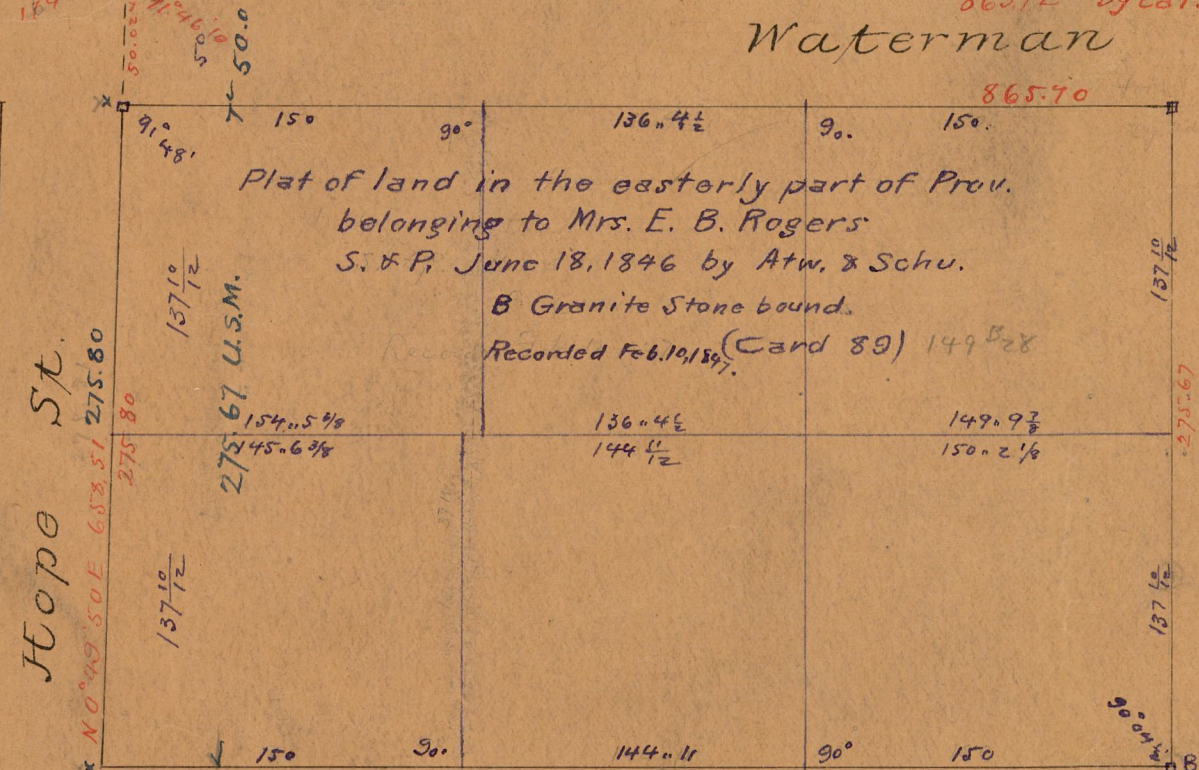
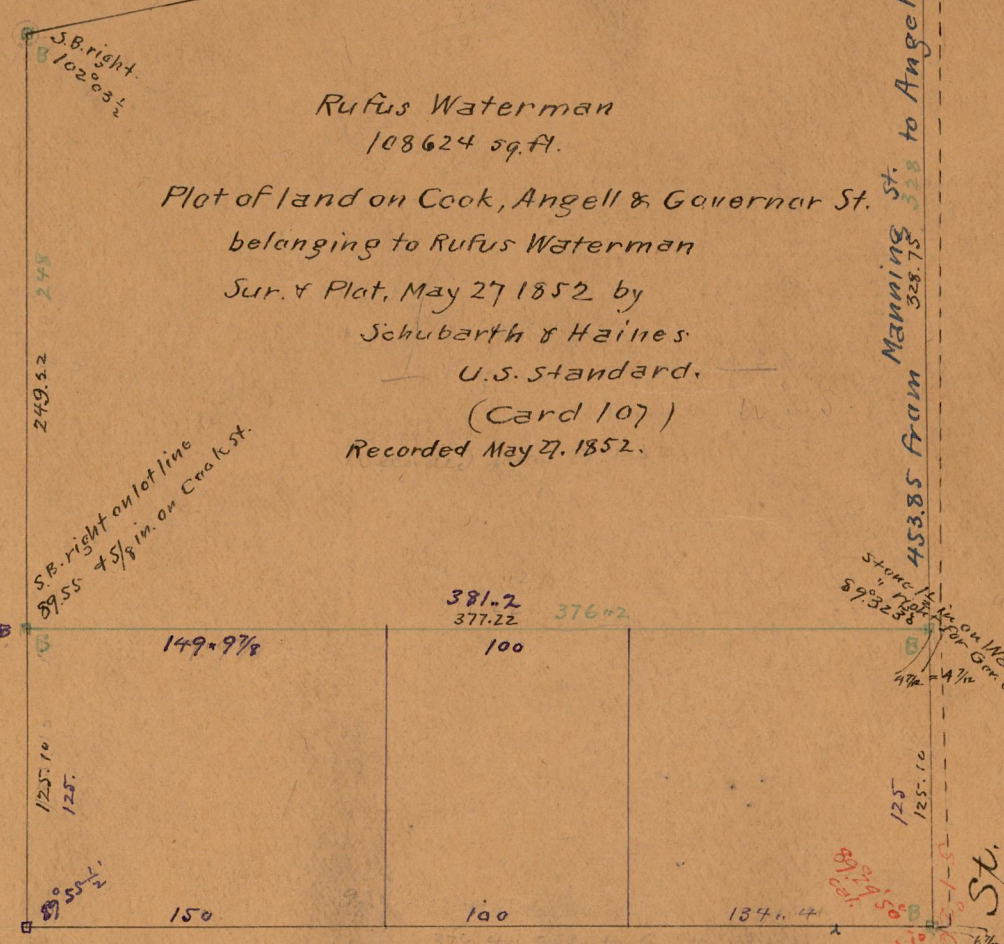
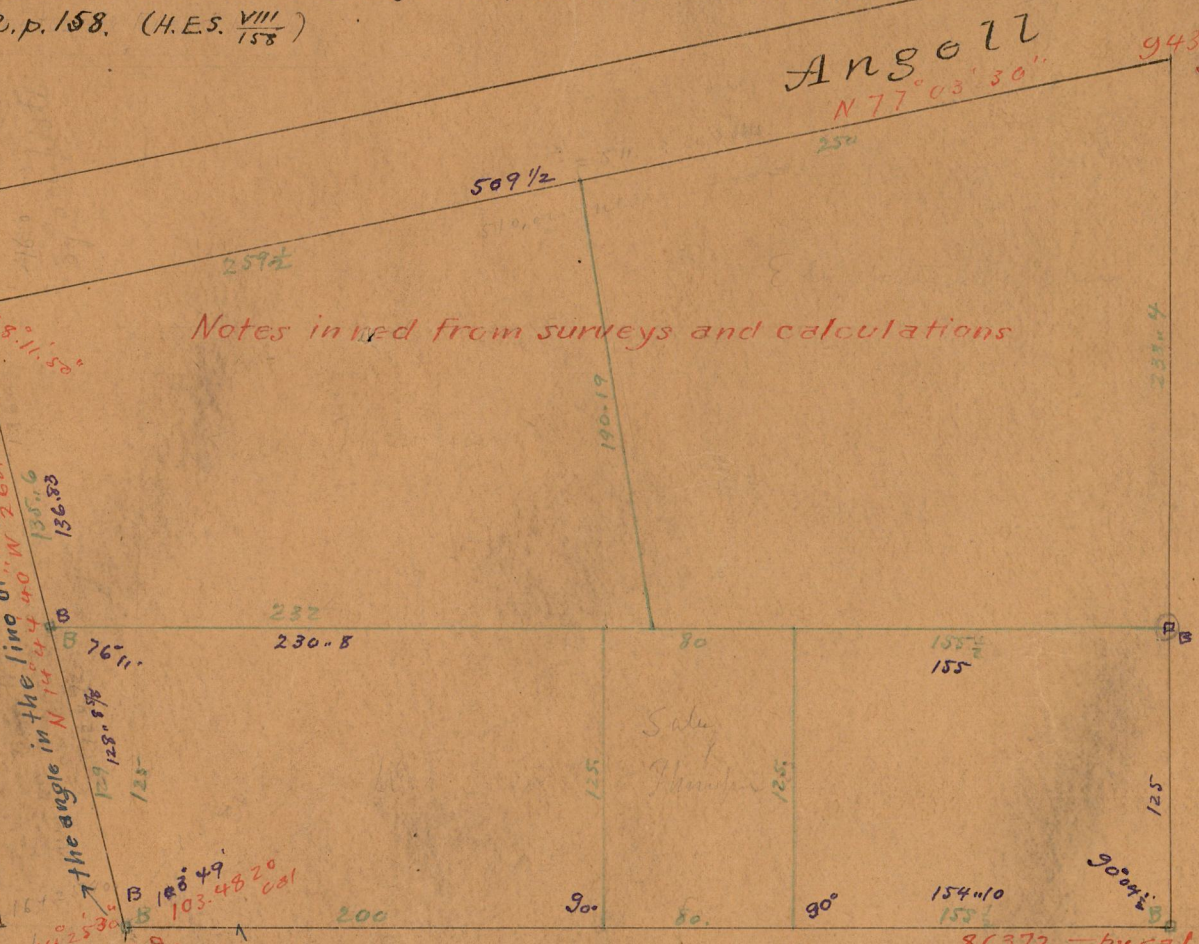
PROVIDENCE, R.I. CITY ENGINEER'S OFFICE STREET LINE DEPT.

May 9, 1918

043387

#352, p. 158. (H.E.S. VIII 1878)

Notes in red from surveys and calculations



93