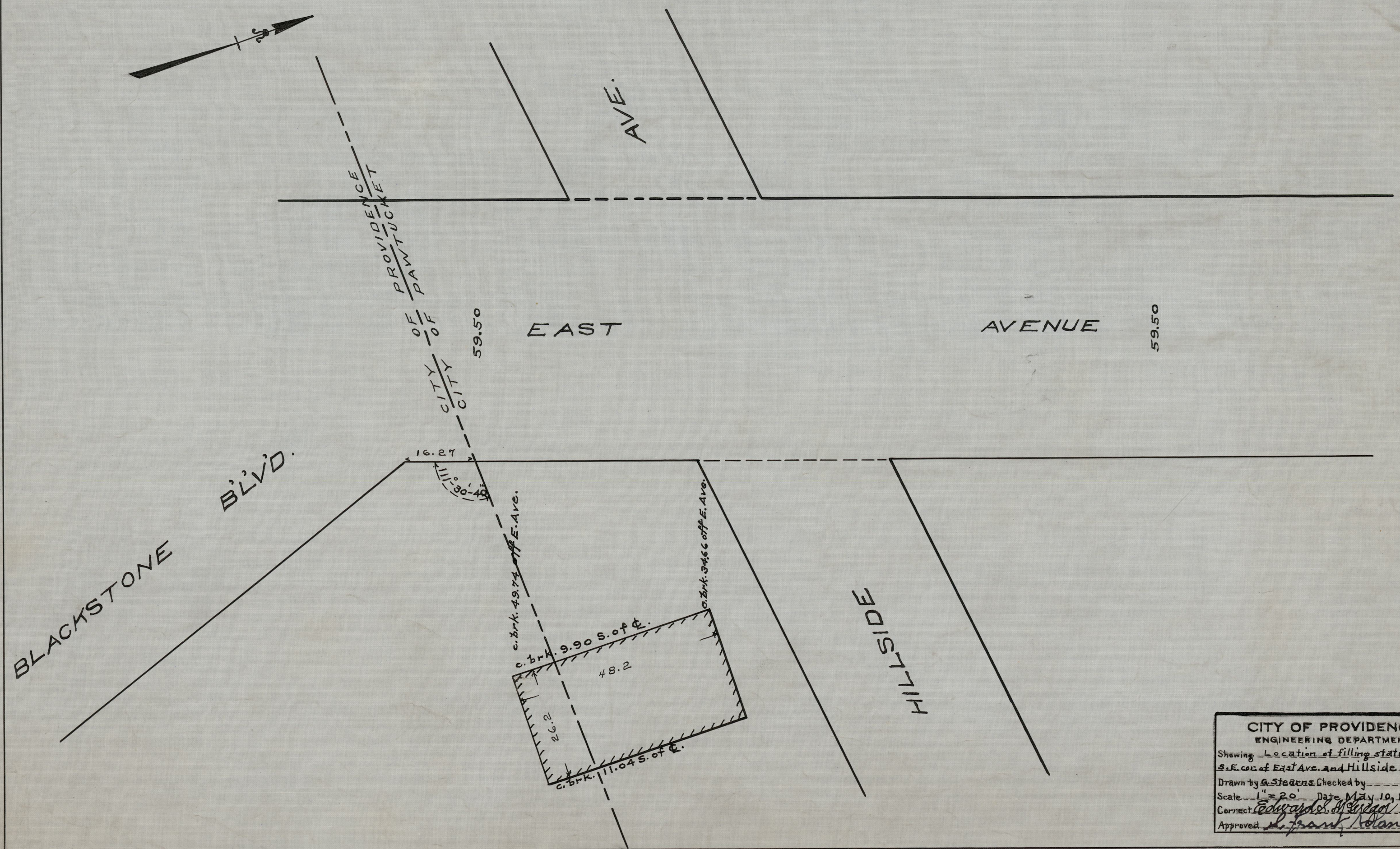
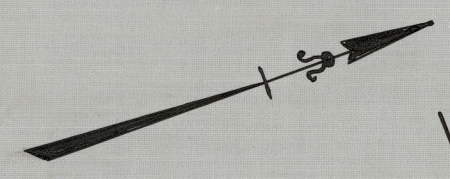


PROVIDENCE, R.I.
 CITY ENGINEER'S OFFICE
 STREET LINE DEPT.
 May 10, 1940.
 058420



CITY OF PROVIDENCE
 ENGINEERING DEPARTMENT
 Showing location of filling station at
 S.E. cor. of East Ave. and Hillside Ave.
 Drawn by G. Stearns Checked by
 Scale 1" = 20' Date May 10, 1940
 Corrected by Edward S. [Signature] Asst. Eng.
 Approved by Frank [Signature] City Eng.