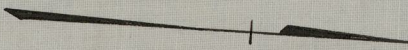


PROVIDENCE, R.I.  
 CITY ENGINEER'S OFFICE  
 STREET LINE DEPT.

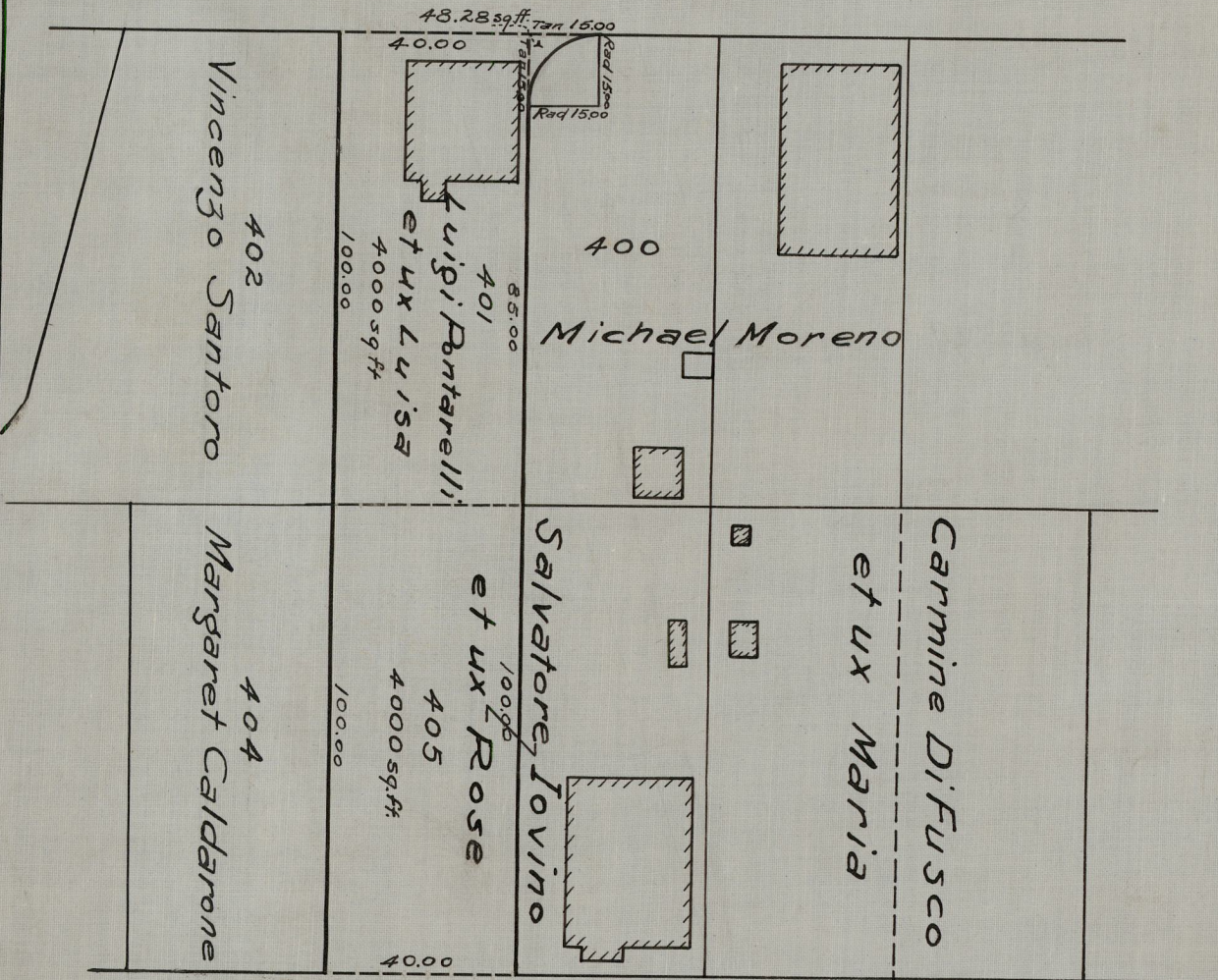
June 5, 1936

056760



LOMBARDI ST.

COMMODORE ST.



CHATHAM ST

ST

FLORA ST.

ST.

(5)

CITY OF PROVIDENCE  
 ENGINEERING DEPARTMENT  
 Showing Proposed extension  
of Lombardi St.  
 Drawn by AC Platt Checked by \_\_\_\_\_  
 Scale 1" = 40' Date June 5, 1936  
 Corrected by Edward J. McKeegan Asst. Eng.  
 Approved Frank J. Nolan City Eng.