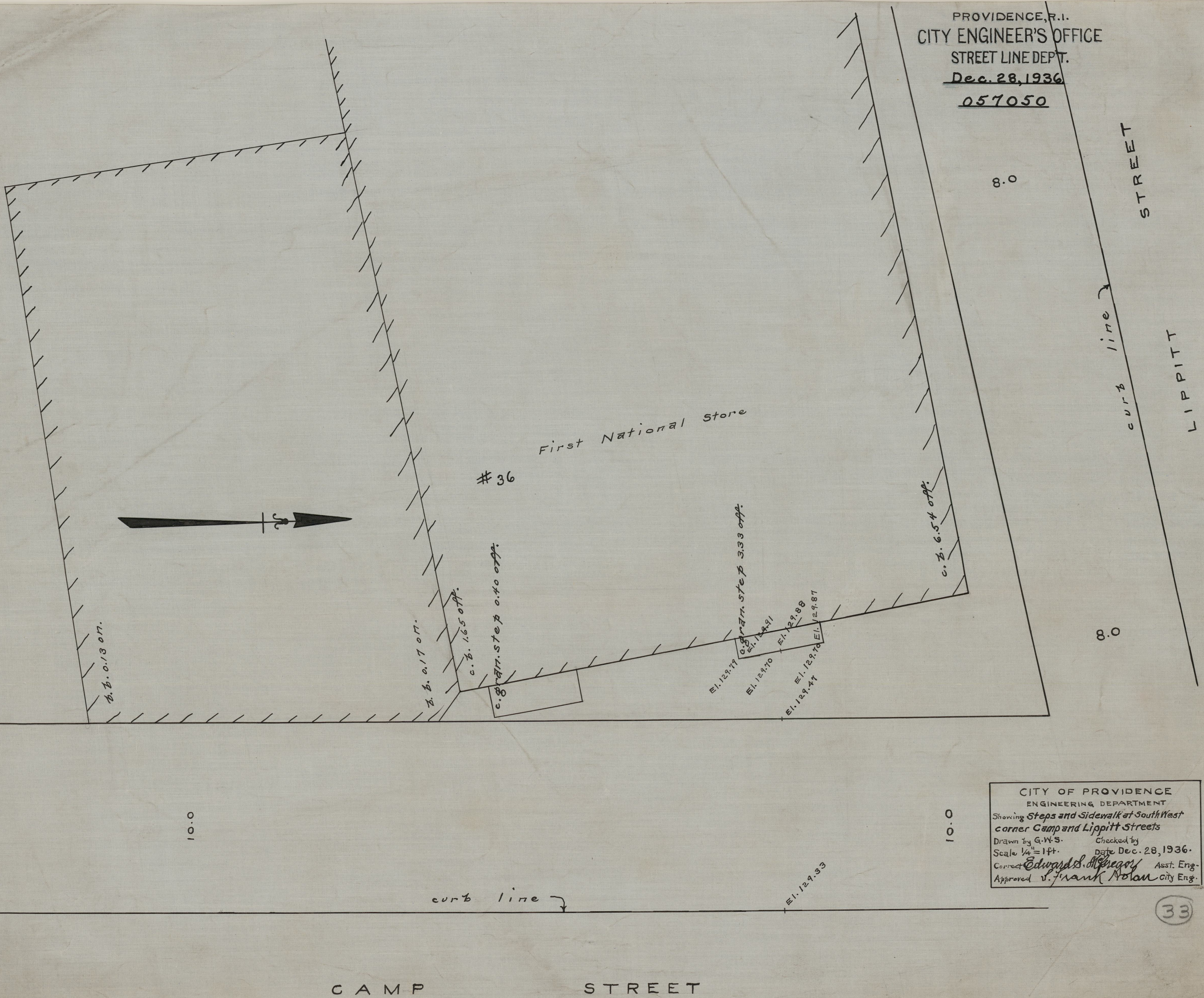


PROVIDENCE, R.I.
CITY ENGINEER'S OFFICE
STREET LINE DEPT.
Dec. 28, 1936
057050



CITY OF PROVIDENCE
ENGINEERING DEPARTMENT
Showing Steps and Sidewalk at South West
corner Camp and Lippitt Streets
Drawn by G.W.S. Checked by
Scale 1/4" = 1 ft. Date Dec. 28, 1936.
Corrected by Edward S. Gregory Asst. Eng.
Approved by Frank Nolan City Eng.