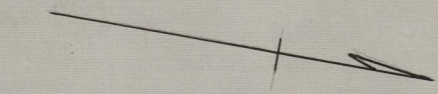
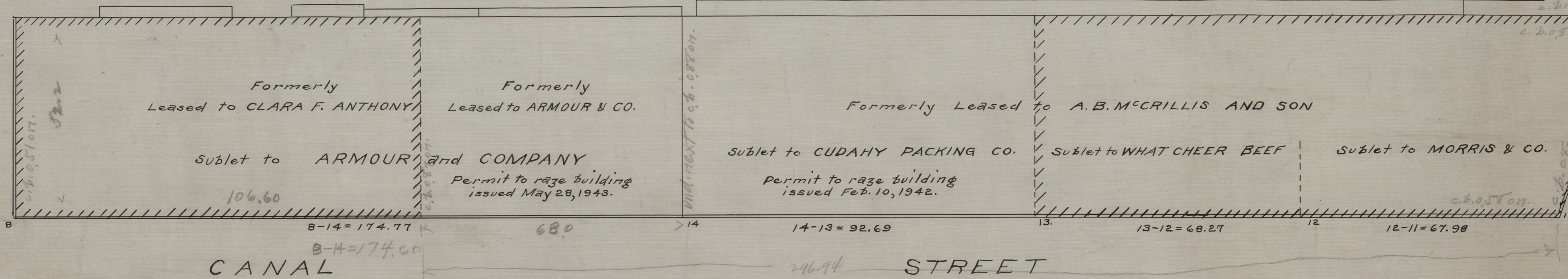


RAILROAD CROSSING ST.



SCALE 1 INCH = 20 FEET

CITY OF PROVIDENCE
ENGINEERING DEPARTMENT
Showing Former Lease Holds
Over Massachusetts River Bed
Drawn by G. Stearns. Checked by _____
Scale 1" = 20' Date Oct. 25, 1943.
Corrected by G. Stearns Asst. Eng'r
Approved by _____ City Eng'r