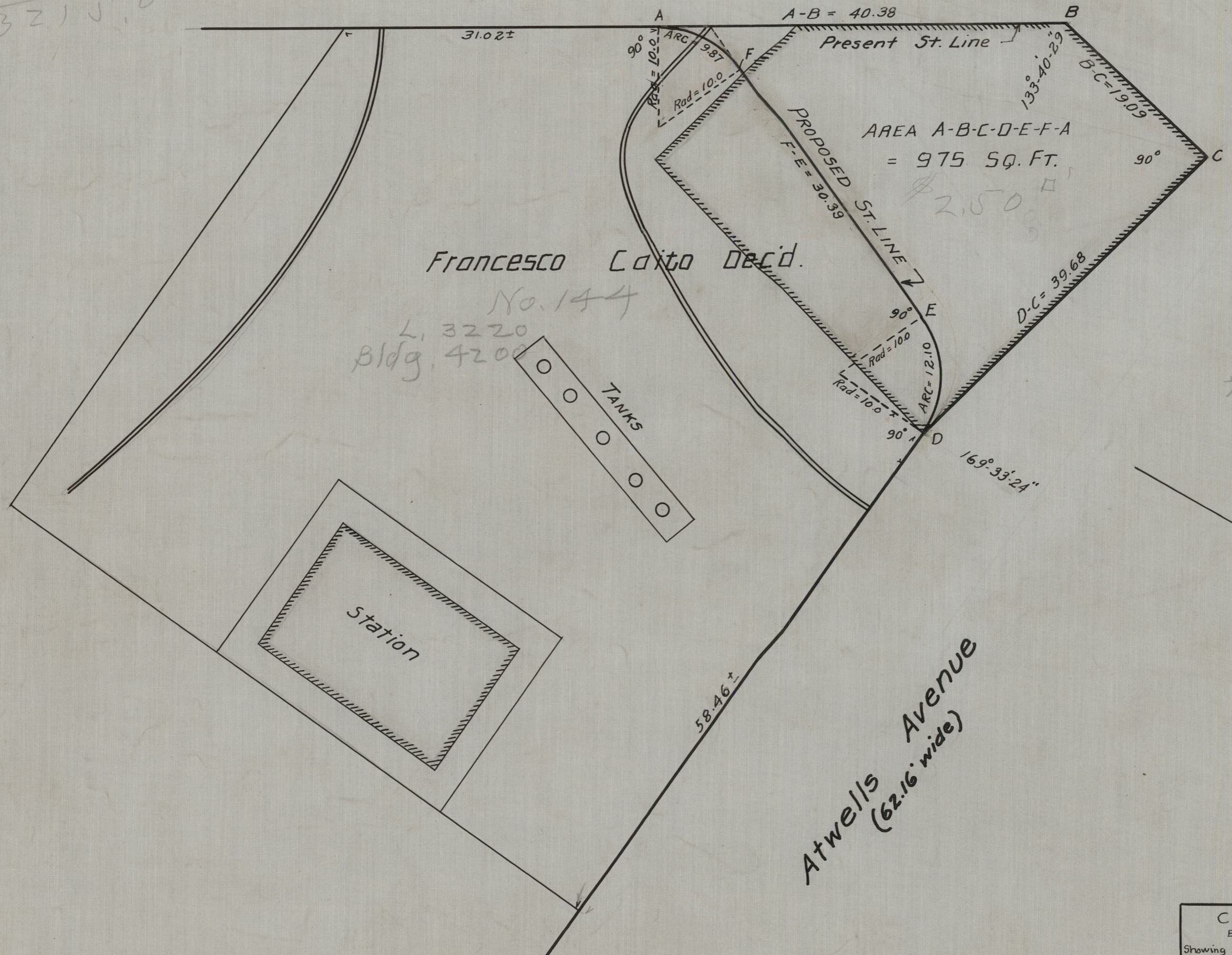


1286
 2.5
 6430
 2572
 3215.0

Knight St.
 (33.10' wide)

PROVIDENCE, R. I.
 CITY ENGINEER'S OFFICE
 STREET LINE DEP'T.
 Feb. 10, 1934
 055444



Assrs. Valuation
 975
 2.5
 4875
 1950
 \$2437.5 - Land taken
 4200 Bldg.
 \$6637

CITY OF PROVIDENCE
 ENGINEERING DEPARTMENT
 Showing Proposed Cut-off at
 Atwells Ave. & Knight St.
 Drawn by Brennen Checked by Barstow
 Scale 10 = 1 inch Date Feb. 10, 1934
 Correct *Edward S. McEugan* Asst. Eng.
 Approved *J. Frank Nolan* City Eng.