

In Two Sheets-Sheet Two

Plat of

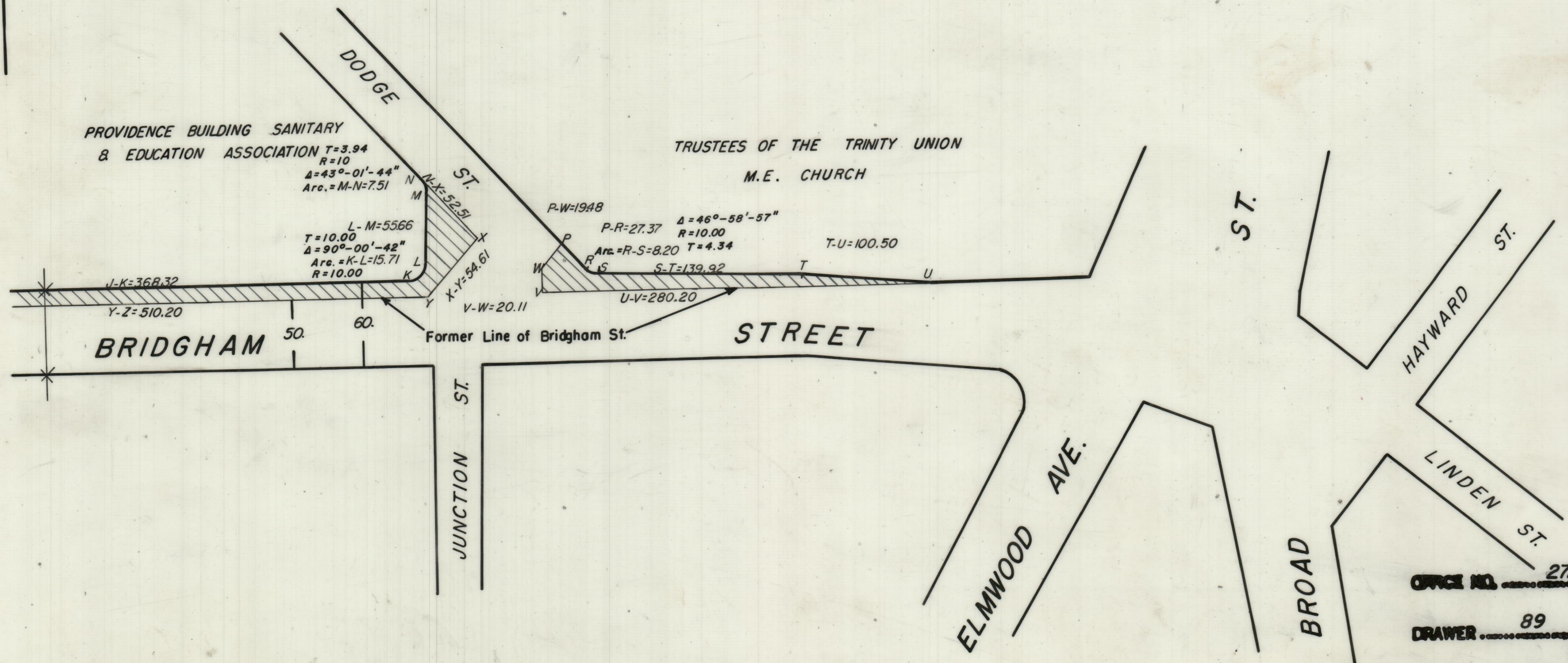
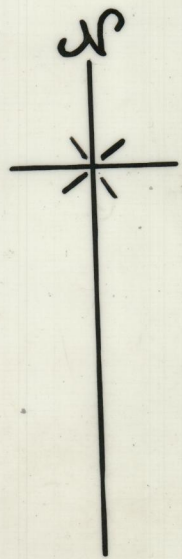
BRIDGHAM STREET

From Elmwood Ave. to Westminster St.
(Portion on Easterly Side)

City Council

October 5, 1970 Scale: 1"=80'

PROVIDENCE, R. I.
 P. W. DEPT. - ENGINEERING OFFICE
 STREET LINE SECTION
 File No 063454
 Date April 9, 1971



City Council Resolution No. 371

OFFICE NO. 27296
 DRAWER 89
 SHEET A-94