

Plat Of

WEST RIVER STREET

From Charles Street To Branch Avenue

City Council

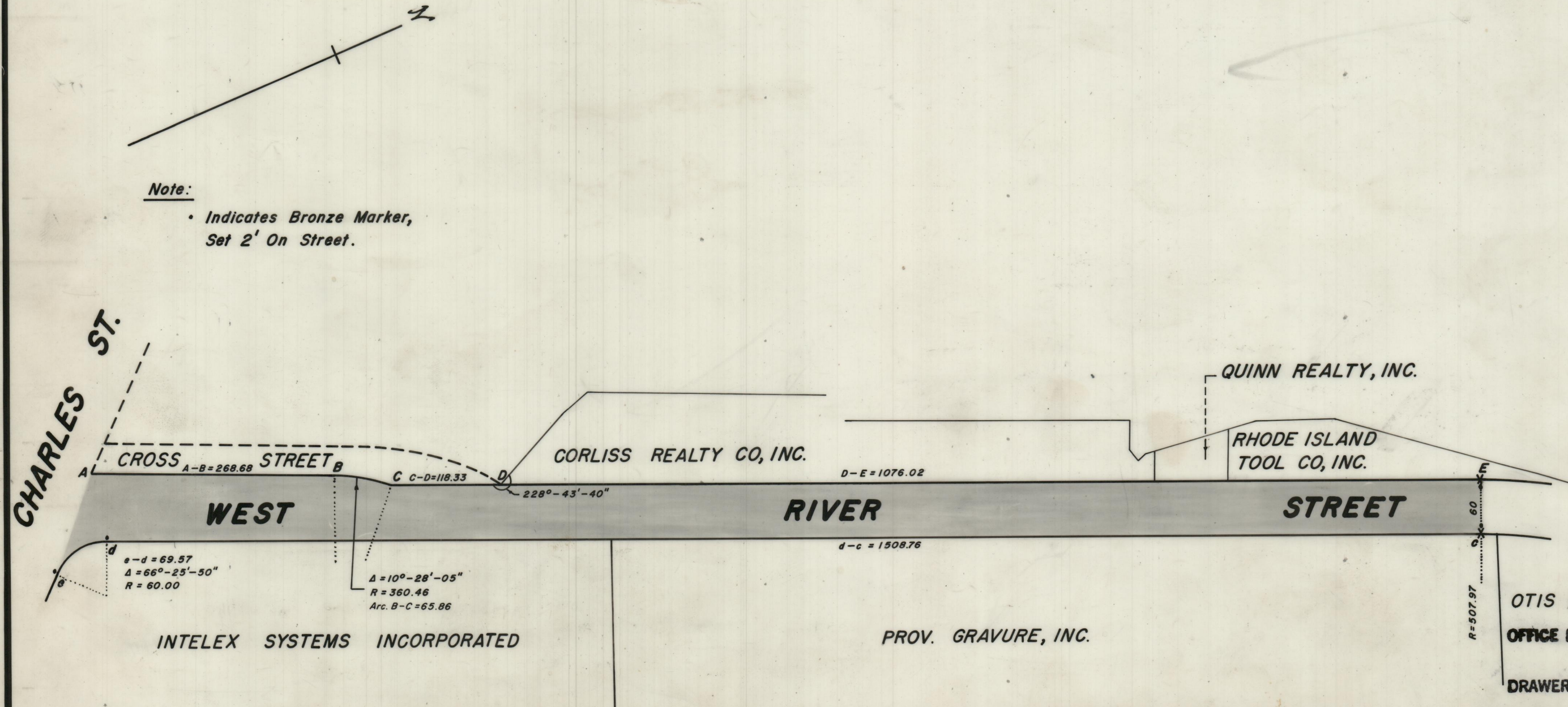
October 5, 1970

Scale 1" = 120'

PROVIDENCE, R. I.
 P. U. DEPT. - ENGINEERING OFFICE
 STREET LINE SECTION
 Plan No. 063434
 Date March 18, 1971

Note:

- Indicates Bronze Marker, Set 2' On Street.



City Council Resolution 371

OTIS ELEVATOR
 OFFICE NO. 27283
 DRAWER 89
 SHEET A-81