

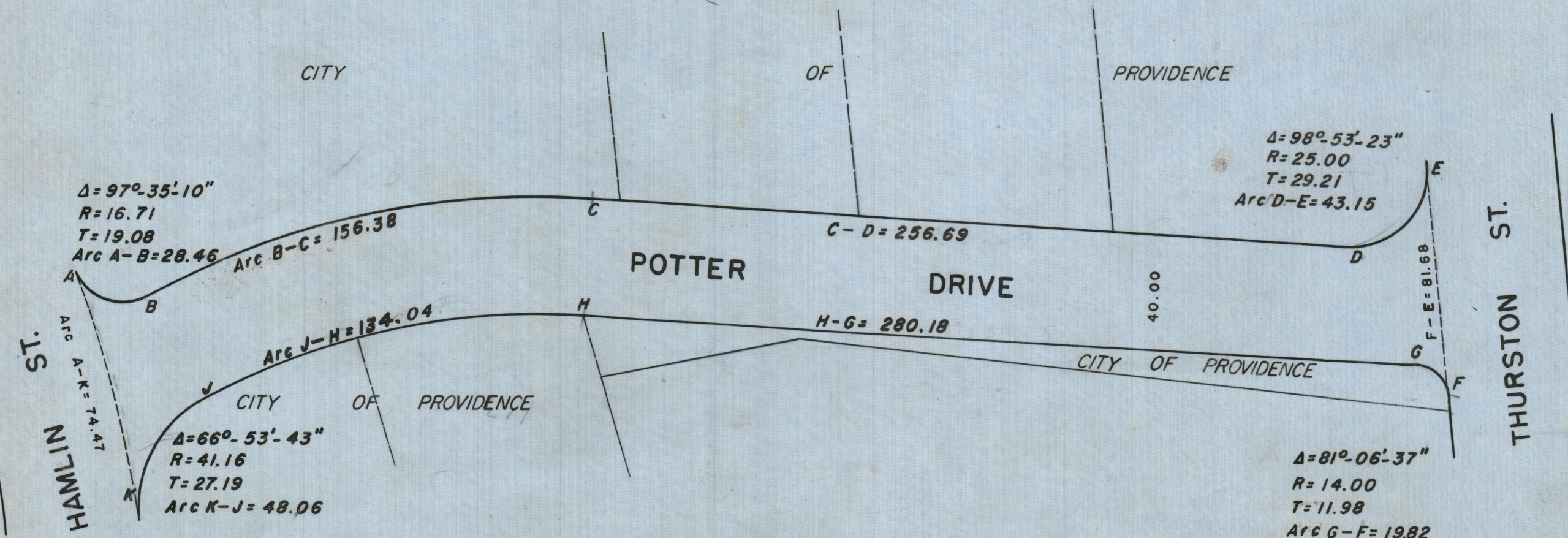
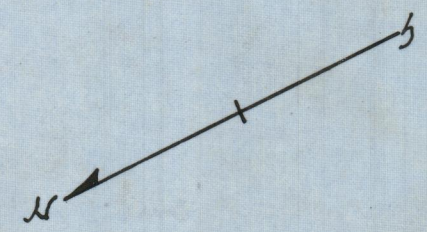
PLAT OF POTTER DRIVE

FROM HAMLIN ST. TO THURSTON ST.

CITY COUNCIL

MARCH 20, 1964 SCALE 1"=40'

PROVIDENCE, R. I.
P. W. DEPT. - ENGINEERING OFFICE
STREET LINE SECTION
Plan No. 062905
Date December 17, 1965



Abutting Land Owned By City Of Providence As Of March 20, 1964

OFFICE NO. 27231 05
 DRAWER 89
 SHEET A-29