

PROVIDENCE R. I.
 PLANNING & ENGINEERING OFFICE
 STREET LINE SECTION
 Plan No. 062444
 Date March 21, 1963

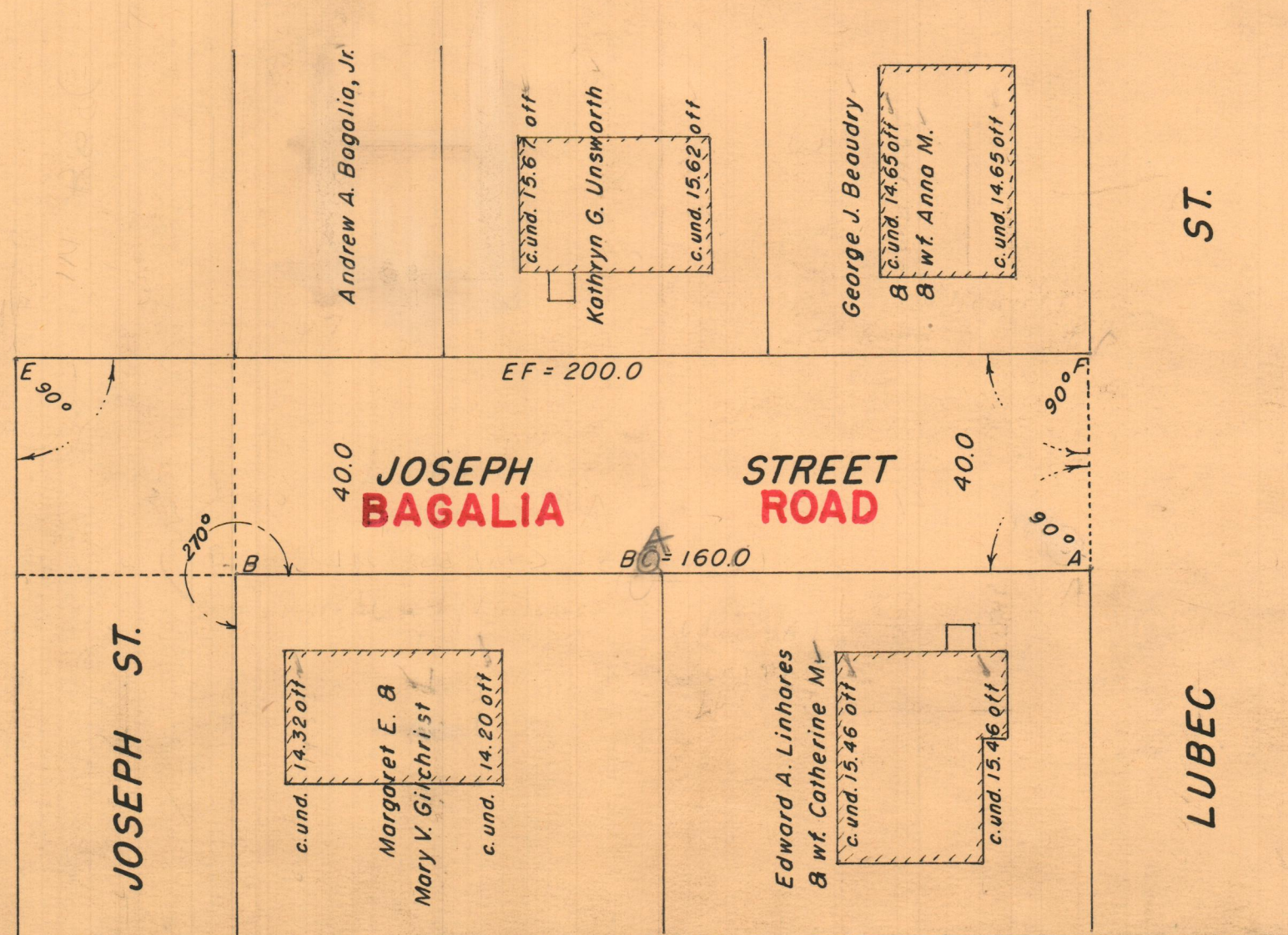
PLAT OF.

JOSEPH STREET

In Two Sheets

From LUBEC ST. N'LY & W'LY TO A POINT 300 FT. WEST OF ANGLE CITY COUNCIL

Scale 1" = 30' April 7, 1961



(NOTE) Portion B to A Changed to BAGALIA ROAD Oct. 6, 1961

OFFICE NO. 27181
 DRAWER 88
 SHEET D-12