

PLAT OF

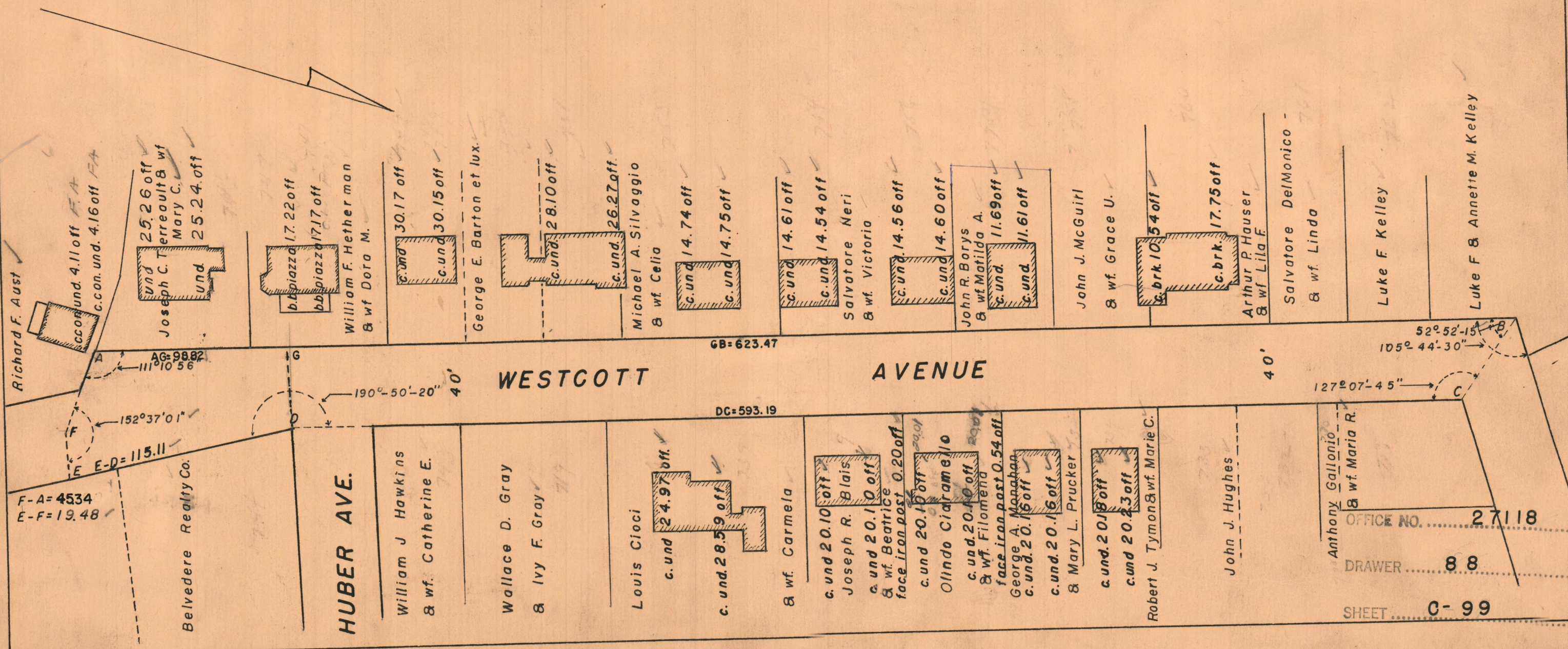
# WESTCOTT AVENUE

FROM ANGLE WEST OF FRUIT HILL AVE. SOUTHERLY  
TO PRESENT END OF RECEIVED PORTION

CITY COUNCIL

NOVEMBER 2, 1956 SCALE 1" = 50'

PROVIDENCE, R. I.  
 P. W. DEPT. - ENGINEERING OFFICE  
 CITY PROPERTY SECTION  
 Plan No 062018  
 Date April 28, 1959



F-A=4534  
E-F=19.48

Belvedere Realty Co.

HUBER AVE.

William J Hawkins  
& wf. Catherine E.

Wallace D. Gray  
& Ivy F. Gray

Louis Cioci  
c. und 24.97 off  
c. und 28.59 off  
& wf. Carmela

c. und 20.10 off  
Joseph R. Blais  
c. und 20.10 off  
& wf. Beatrice  
face iron post 0.20 off  
c. und 20.10 off  
Olindo Ciaramello  
c. und 20.10 off  
& wf. Filomena  
face iron post 0.54 off  
George A. Manghan  
c. und 20.16 off  
c. und 20.16 off  
& Mary L. Prucker

c. und 20.18 off  
c. und 20.23 off  
Robert J. Tymon & wf. Marie C.

John J. Hughes

Anthony Gallonio  
& wf. Maria R.

OFFICE NO. 27118  
DRAWER 88  
SHEET C-99

127°07'-45"  
105°44'-30"  
52°52'-15"

GB=623.47

DC=593.19

WESTCOTT AVENUE

40'

Richard F. Aust  
c. con. und. 4.11 off FA  
c. con. und. 4.16 off FA

25.26 off  
Joseph C. Terreault & wf. Mary C.  
und 25.24 off

b. piazza 17.22 off  
bb. piazza 17.17 off  
William F. Hetherman  
& wf. Dora M.

c. und 30.17 off  
c. und 30.15 off  
George E. Barton et lux.

c. und 28.10 off  
c. und 26.27 off  
Michael A. Silvaggio  
& wf. Celia

c. und 14.74 off  
c. und 14.75 off

c. und 14.61 off  
c. und 14.54 off  
Salvatore Neri  
& wf. Victoria

c. und 14.56 off  
c. und 14.60 off  
John R. Borys  
& wf. Matilda A.

c. und 11.69 off  
c. und 11.61 off

John J. McGuirl  
& wf. Grace U.

c. brk. 10.54 off  
c. brk. 17.75 off  
Arthur P. Hauser  
& wf. Lila F.

Salvatore DelMonico  
& wf. Linda

Luke F. Kelley

Luke F. & Annette M. Kelley