

PLAT
OF PORTIONS OF
PAWTUCKET AVENUE

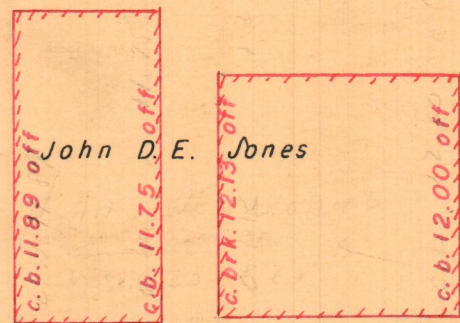
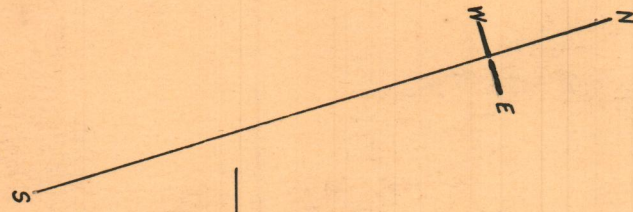
DECLARED USELESS FOR PUBLIC HIGHWAY PURPOSES

BY THE RESOLUTION OF
BOARD OF ALDERMEN

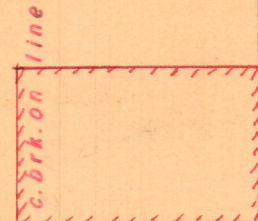
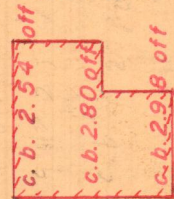
PROVIDENCE, R. I.
P. W. DEPT. - ENGINEERING OFFICE
STREET LINE SECTION
Plan No. 061778
Date NOV. 6, 1958

Note:
Figures in red denote new offsets
See F.B. 2357 Pages 2-9

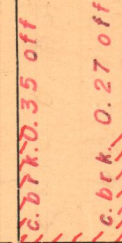
Scale 60 Feet Per Inch



Daniel C. Jenckes Est.



WHITE ST.



Nicholas Brown

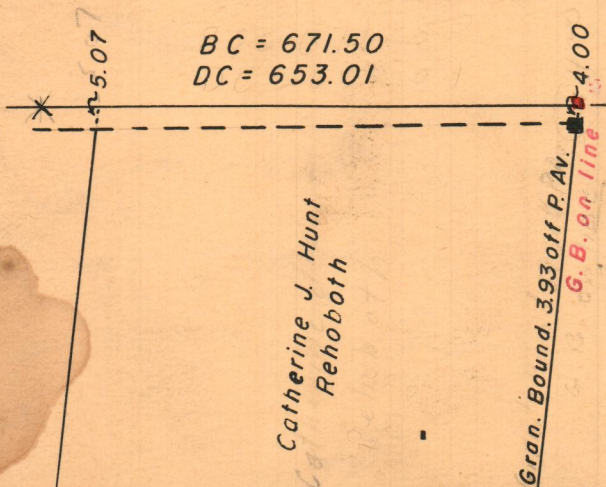
PAWTUCKET AVENUE

92.25

92.25

47.50

Granite Bound

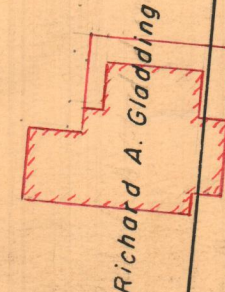


NINTH ST.

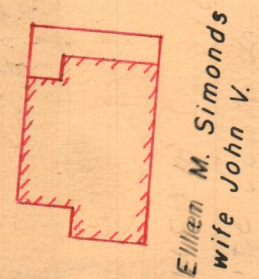
3.58



3.05



2.52

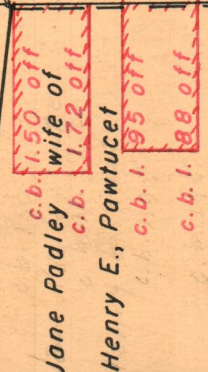


BC = 671.50



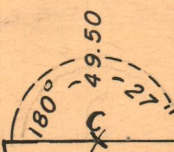
TENTH ST.

1.04



0.51

CHACE AVE.



Thomas Davis 2nd
of Boston
John D. Lewis

OFFICE NO. 27091

DRAWER 88

SHEET C-72