

PLAT
OF PORTIONS OF
PAWTUCKET AVENUE

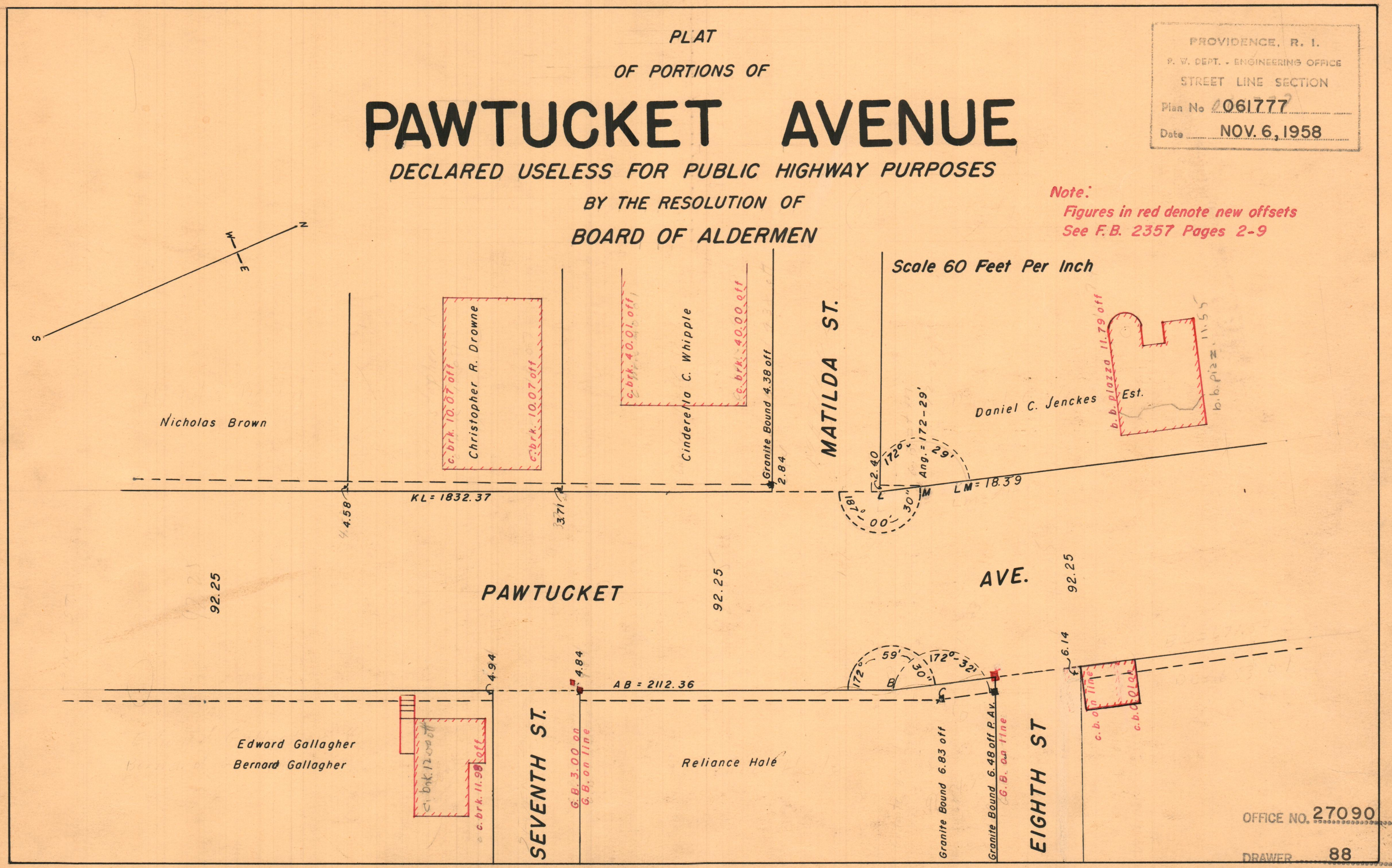
DECLARED USELESS FOR PUBLIC HIGHWAY PURPOSES

BY THE RESOLUTION OF
BOARD OF ALDERMEN

PROVIDENCE, R. I.
P. W. DEPT. - ENGINEERING OFFICE
STREET LINE SECTION
Plan No. 061777
Date NOV. 6, 1958

Note:
Figures in red denote new offsets
See F.B. 2357 Pages 2-9

Scale 60 Feet Per Inch



92.25

PAWTUCKET

92.25

AVE.

92.25

Edward Gallagher
Bernard Gallagher

SEVENTH ST.

Reliance Hotel

Granite Bound 6.83 off

Granite Bound 6.48 off P.A.V.
G.B. on line

EIGHTH ST

OFFICE NO. 27090

DRAWER 88

SHEET C-71