

PLAT  
OF PORTIONS OF  
**PAWTUCKET AVENUE**

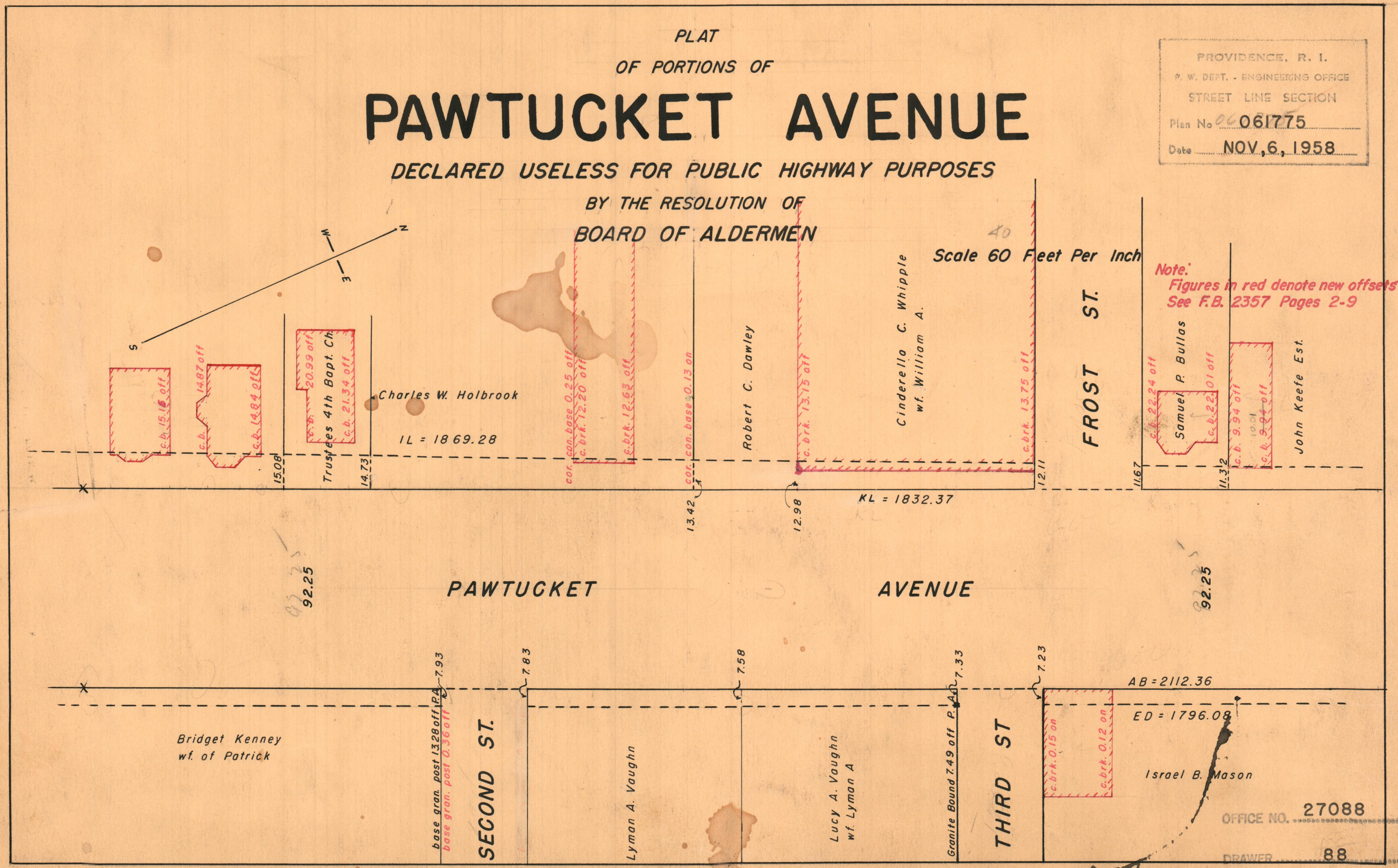
DECLARED USELESS FOR PUBLIC HIGHWAY PURPOSES

BY THE RESOLUTION OF  
BOARD OF ALDERMEN

PROVIDENCE, R. I.  
P. W. DEPT. - ENGINEERING OFFICE  
STREET LINE SECTION  
Plan No. 06061775  
Date NOV. 6, 1958

Scale 60 Feet Per Inch

Note:  
Figures in red denote new offsets  
See F.B. 2357 Pages 2-9



OFFICE NO. 27088

DRAWER 88

SHEET C-69