

# PLAT OF PORTIONS OF PAWTUCKET AVENUE

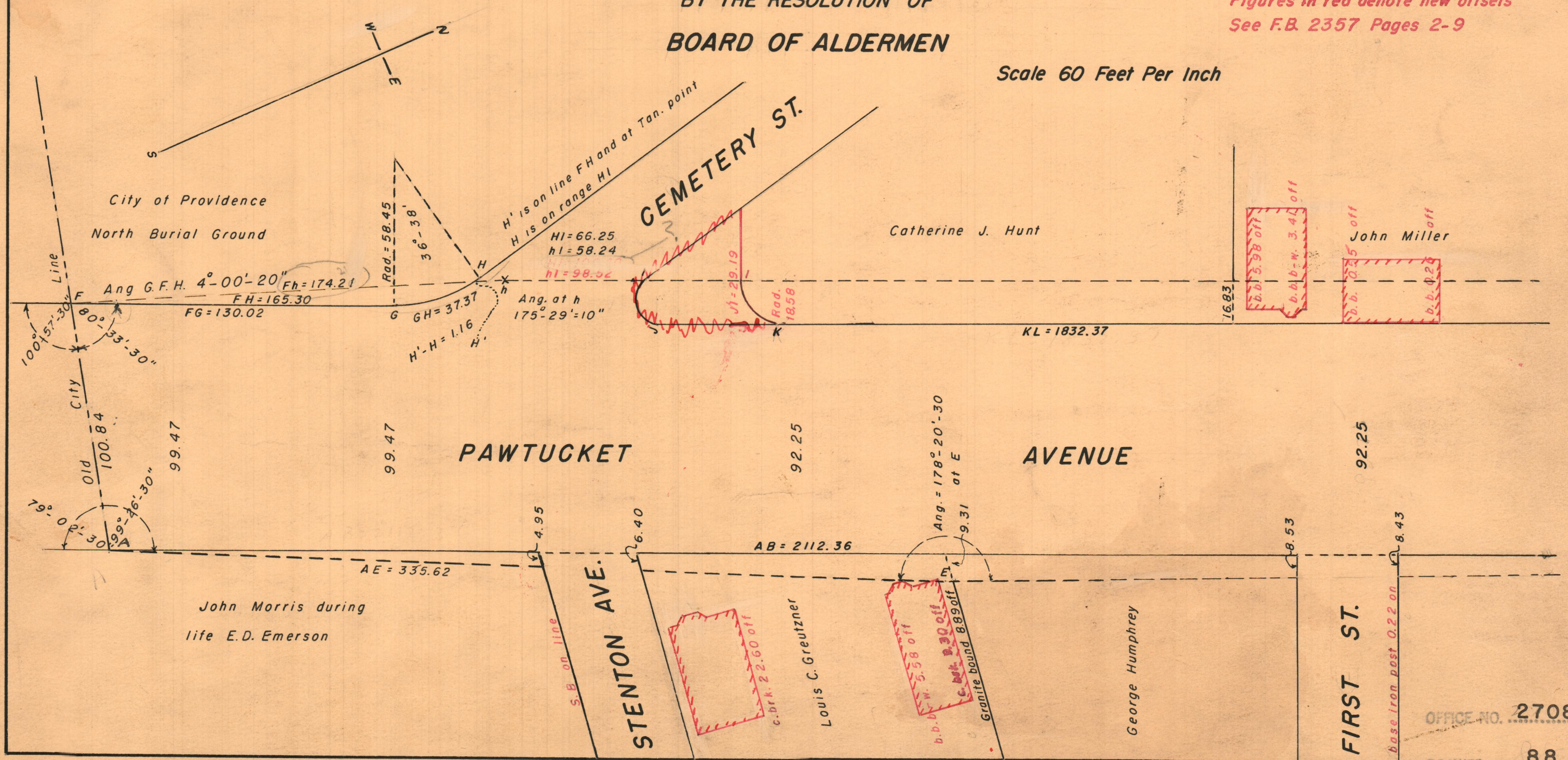
DECLARED USELESS FOR PUBLIC HIGHWAY PURPOSES

BY THE RESOLUTION OF  
BOARD OF ALDERMEN

PROVIDENCE, R. I.  
C. V. DEPT. - ENGINEERING OFFICE  
STREET LINE SECTION  
Plan No. 061774  
Date N NOV. 6, 1958

Note:  
Figures in red denote new offsets  
See F.B. 2357 Pages 2-9

Scale 60 Feet Per Inch



OFFICE NO. 27087

DRAWER 88

SHEET C-68