

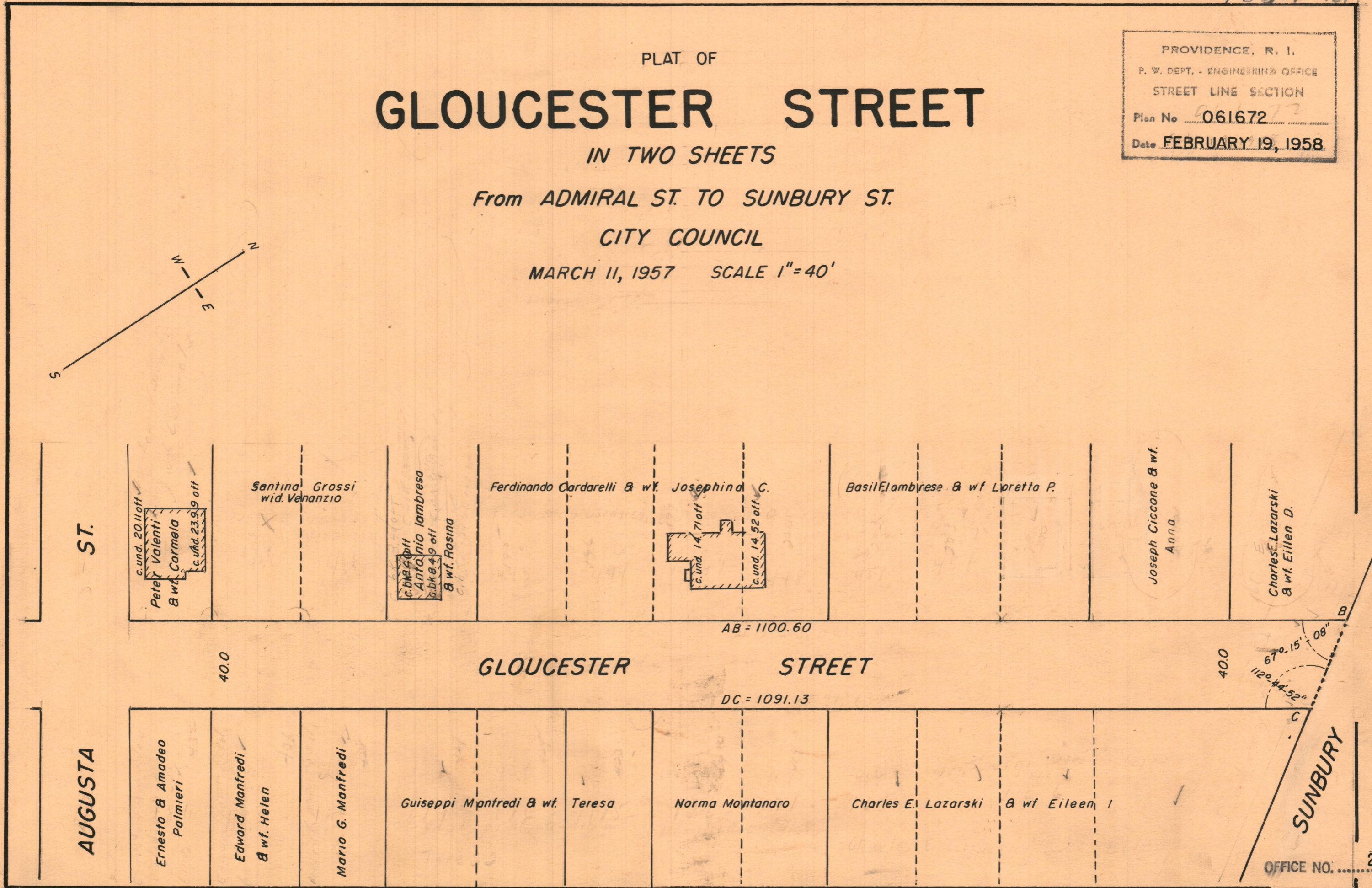
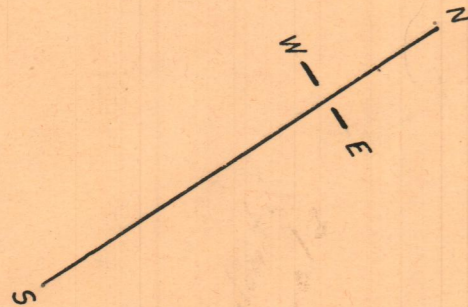
PLAT OF
GLOUCESTER STREET
IN TWO SHEETS

PROVIDENCE, R. I.
P. W. DEPT. - ENGINEERING OFFICE
STREET LINE SECTION
Plan No. 061672
Date FEBRUARY 19, 1958

From ADMIRAL ST. TO SUNBURY ST.

CITY COUNCIL

MARCH 11, 1957 SCALE 1"=40'



ADMIRAL ST.

AUGUSTA ST.

SUNBURY ST.

Peter Valenti & wf Carmela c. und. 20.11 off c. und. 23.99 off	Santina Grossi wid. Venanzio	Antonio Iambresa & wf. Rosina c. bk. 4.9 off c. bk. 4.9 off	Ferdinando Cardarelli & wf. Josephina C. c. und. 14.71 off c. und. 14.52 off	Basil Iambrese & wf Loretta P.	Joseph Ciccone & wf. Anna	Charles Lazarski & wf. Eileen D.
Ernesto & Amadeo Palmieri	Edward Manfredi & wf. Helen	Mario G. Manfredi	Guiseppi Manfredi & wf. Teresa	Norma Montanaro	Charles E. Lazarski & wf Eileen I	

AB = 1100.60

DC = 1091.13

40.0
67° 15' 08"
120° 44' 52"

OFFICE NO. 27064

DRAWER 88

SHEET C-45