

# PLAT OF GLOUCESTER STREET

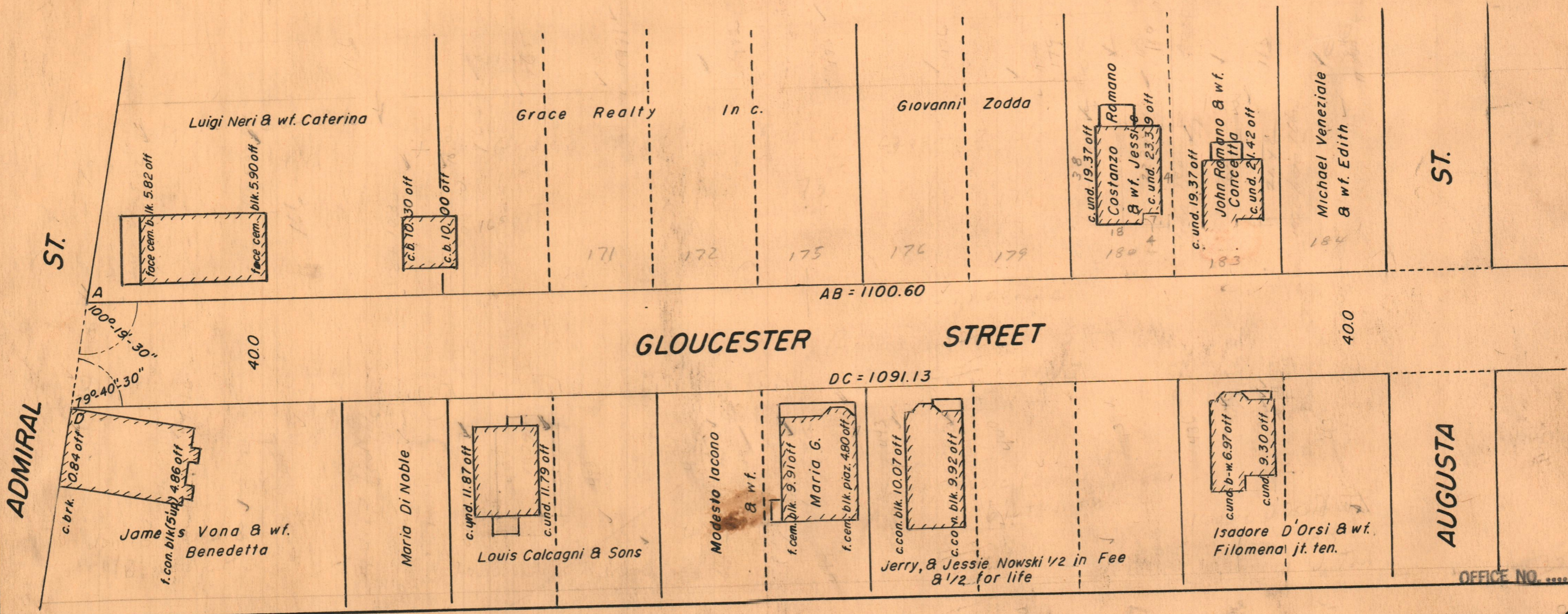
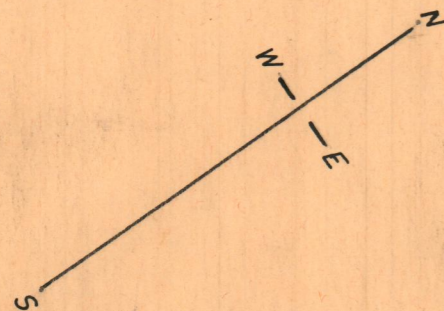
IN TWO SHEETS

From ADMIRAL ST. TO SUNBURY ST.

CITY COUNCIL

MARCH 11, 1957 SCALE 1" = 40'

PROVIDENCE, R. I.  
 P. W. DEPT. - ENGINEERING OFFICE  
 STREET LINE SECTION  
 Plan No. 061671  
 Date FEBRUARY 19, 1958



OFFICE NO. 27063

DRAWER 88

SHEET C-44