

SHEET ONE

PLAT OF

# HUNNEWELL AVENUE

In Two Sheets

From 200' North of Ada Ave. to Chalkstone Ave.

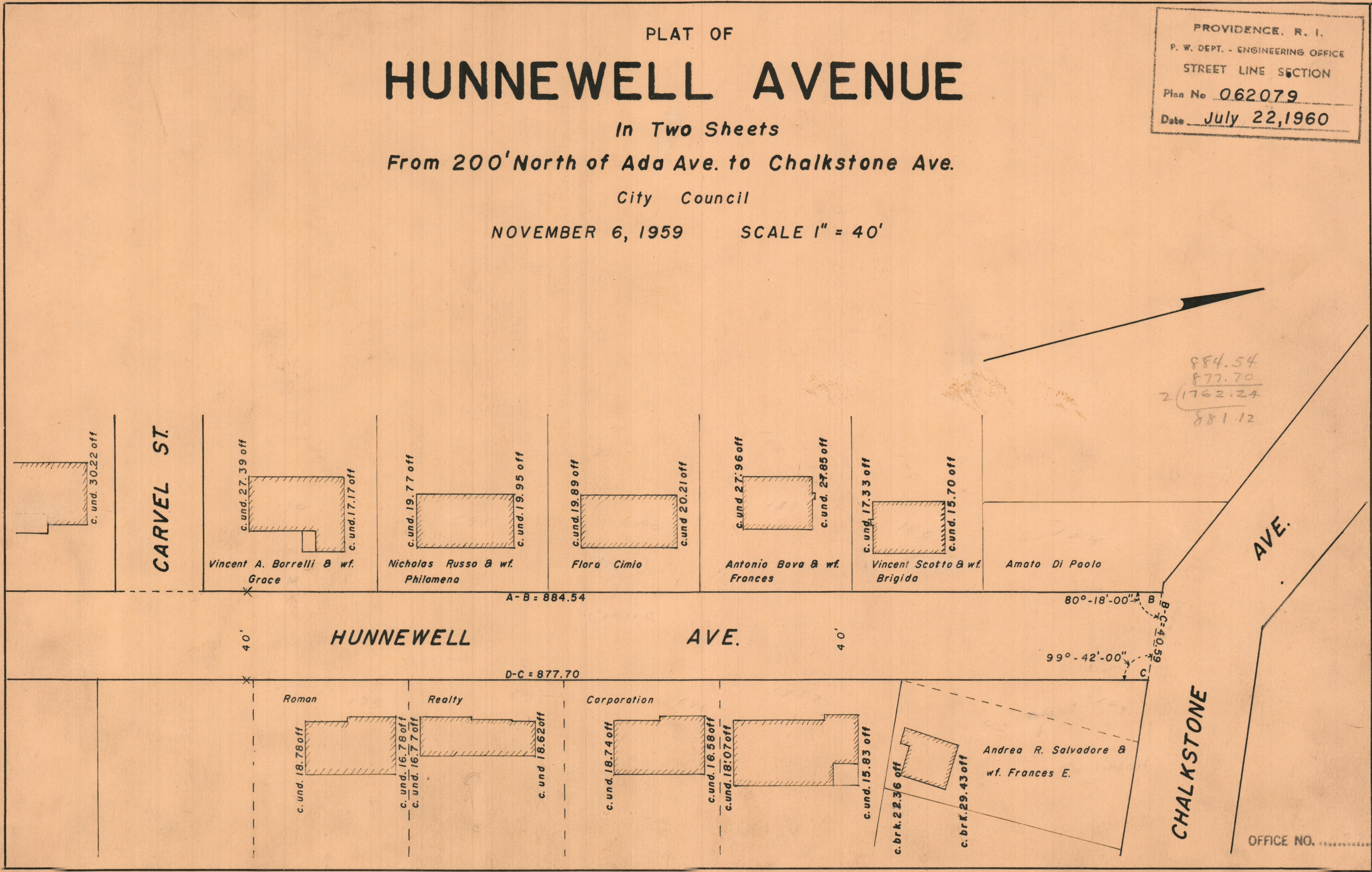
City Council

NOVEMBER 6, 1959

SCALE 1" = 40'

PROVIDENCE, R. I.  
 P. W. DEPT. - ENGINEERING OFFICE  
 STREET LINE SECTION  
 Plan No 062079  
 Date July 22, 1960

884.54  
 877.70  
 2 1762.24  
 881.12



CARVEL ST.

c. und. 30.22 off

c. und. 27.39 off

c. und. 17.17 off

Vincent A. Borrelli & wf. Grace

c. und. 19.77 off

c. und. 19.95 off

Nicholas Russo & wf. Philomena

c. und. 19.89 off

c. und. 20.21 off

Flora Cimio

c. und. 27.96 off

c. und. 27.85 off

Antonio Bava & wf. Frances

c. und. 17.33 off

c. und. 15.70 off

Vincent Scotto & wf. Brigida

Amato Di Paolo

A-B = 884.54

80°-18'-00"

40'

HUNNEWELL

AVE.

40'

D-C = 877.70

99°-42'-00"

Roman

Realty

Corporation

c. und. 18.78 off

c. und. 16.78 off

c. und. 16.77 off

c. und. 18.62 off

c. und. 18.74 off

c. und. 16.58 off

c. und. 18.07 off

c. und. 15.83 off

c. brk. 22.36 off

c. brk. 29.43 off

Andrea R. Salvatore & wf. Frances E.

CHALKSTONE

OFFICE NO. 27144

DRAWER 88

SHEET C-125