

PLAT OF RIDGEWAY AVENUE

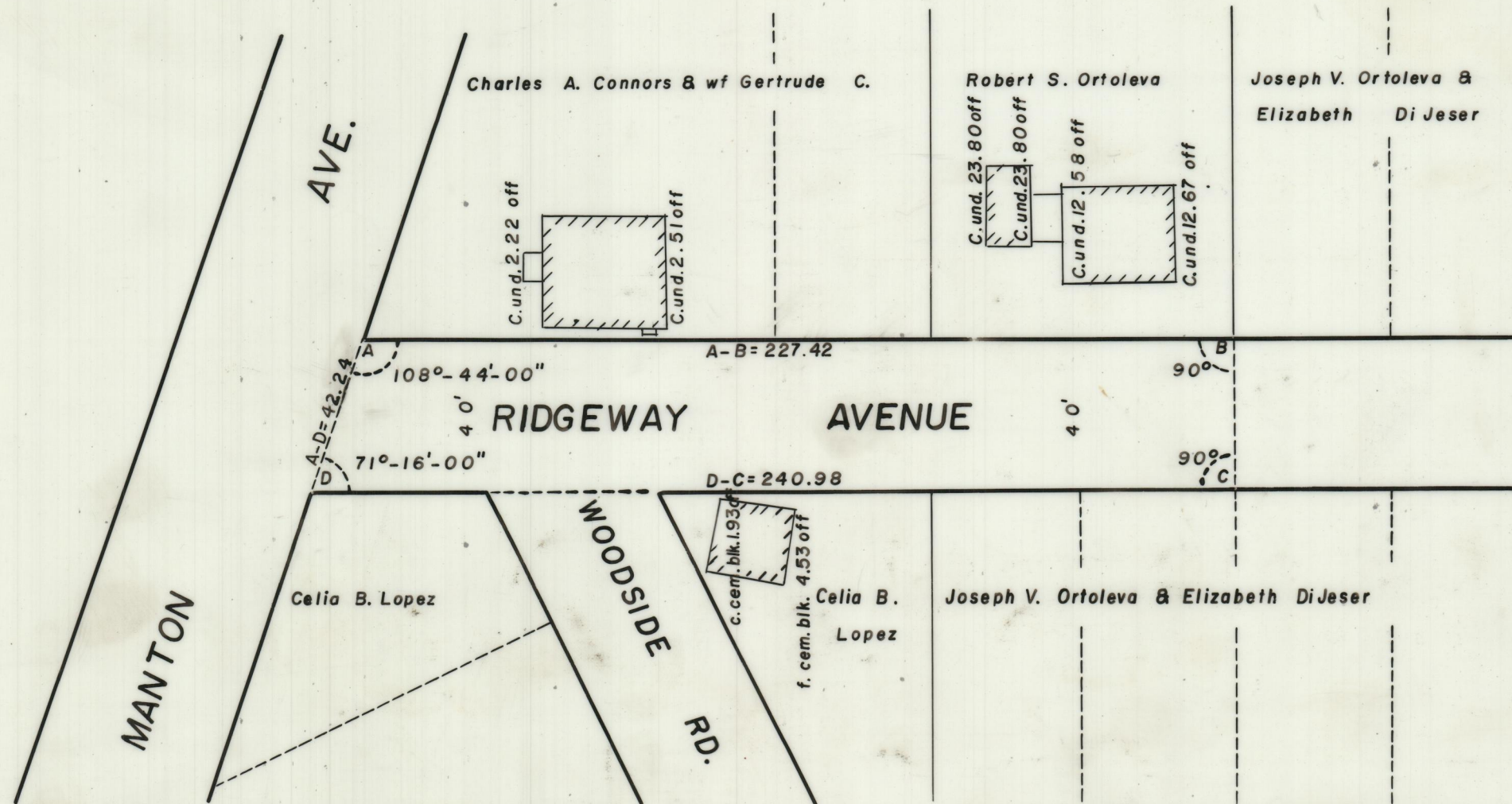
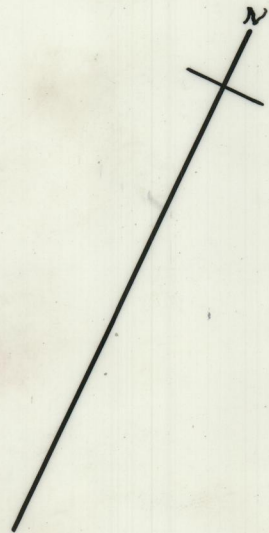
From Manton Ave. 234.2 ft. Easterly

City Council

AUGUST 7, 1959

SCALE 1" = 40'

062081
July 22, 1960



PLAT OF RIDGEWAY AVENUE

From Manton Ave. 234.2 ft. Easterly

City Council

AUGUST 7, 1959

SCALE 1" = 40'

062081
July 22, 1960

