

76-2

Mar. 14 91

PROVIDENCE, R. I.

P. W. DEPT. - ENGINEERING OFFICE

STREET LINE SECTION

Plan No. 061288

Date October 26, 1955

Plat Of

# CHACE AVENUE

From The Portion Already Received At The Range Of The Easterly Line Of The "West View Plat"

To The Angle 101.04 Feet East Of The Range Of The Easterly Line Of Top St. (North Side)

And To The Range Of The Said Easterly Line Of Top St. (South Side)

City Council

September 17, 1954

Scale-1"=40'



Greaton Dr.

"West View Plat"

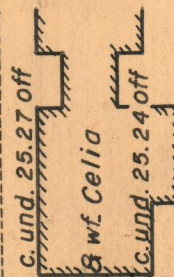
b.b. plaz. 3.22 off AB



b.b. plaz. 7.55 off AB

c.bk. 25.42 off  
Joseph Erenfrucht  
& wf. Jessie M.  
c.bk. 25.45 off

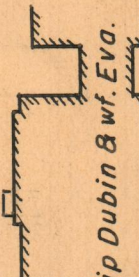
Martin Duchan



c. und. 25.27 off  
Philip Dubin & wf. Eva.  
c. und. 21.10 off

Chace Drive

c. und. 21.12 off



c. und. 21.10 off

c. und. 22.03 off

Harold Stanzler & wf. Laura

c. und. 21.99 off

Sumner B. Halsband

& wf. Shirley R.

c. bk. plaz. 5.22 off BC



c. bk. plaz. 7.20 off BC

Joseph H. Kelly

& wf. Margaret A.

D-C=10.05

40

L-A=44.57  
110°-36'-05"

A-B=97.25  
63°-49'-40"  
183°-12'-35"

K-J=96.72

B  
184°-50'-40"

36

177°-31'-00"

Chace

J-H=226.73

B-C=455.14

36

G-H=4.07

40

Ave.

G-F=121.98

259°-35'-00"

10

E-D=103.93

10

95°-59'-20"

84°-00'-40"

Portion Previously Received

30

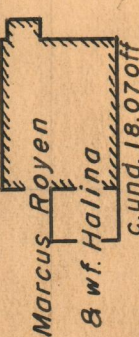
40

Edward C. Shaw & wf Anna M.

c. b. 11.53 off

c. b. 12.58 off

c. und. 18.26 off



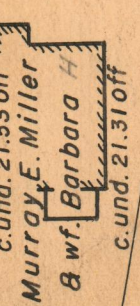
c. und. 18.07 off

c. und. 17.88 off



c. und. 17.56 off

c. und. 21.53 off



c. und. 21.31 off

c. b. door 6.99 off

A. Herbert Barenboim  
& wf. Sadie

G. B. on line C. Ave.

Top St.

c. und. 19.47 off  
(RANGE G-F)

c. und. 22.12 off  
(RANGE G-F)

Jane H. Glass

OFFICE No. 26992

DRAWER 88

SHEET B-73