

PLAT OF

TURNER STREET

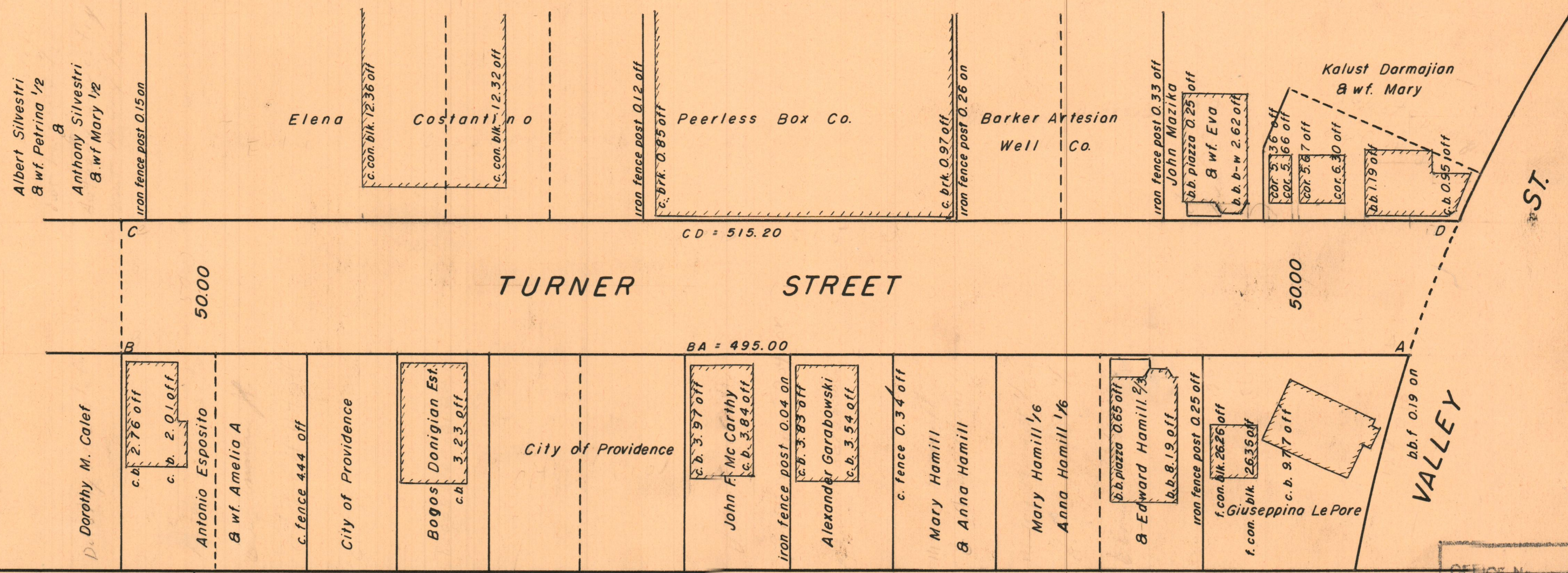
From VALLEY ST. TO A POINT 495.00' WEST OF
SOUTH WESTERLY CORNER OF VALLEY & TURNER STS.

CITY COUNCIL

MARCH 5, 1951

SCALE 1" = 40'

PROVIDENCE, R. I.
 P. W. DEPT. - ENGINEERING OFFICE
 STREET LINE SECTION
 Plan No. 060507
 Date FEBRUARY 4, 1952



OFFICE No. 26878
 DRAWER 88
 SHEET - A-9