

# PLAT OF CUMBERLAND STREET

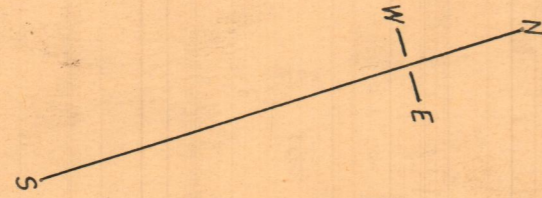
From SANDRINGHAM AVE. TO ADMIRAL ST.

CITY COUNCIL

APRIL 18, 1952

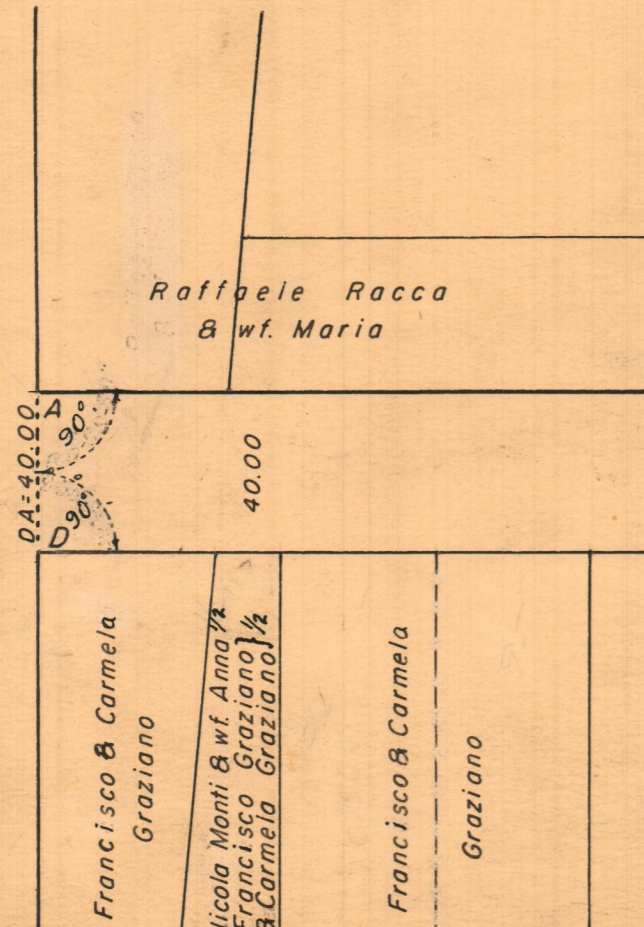
PROVIDENCE, R. I.  
 P. W. DEPT. - ENGINEERING OFFICE  
 STREET LINE SECTION  
 Plan No. 060663  
 Date JANUARY 16, 1953

SCALE 1"=50'



SANDRINGHAM AVE.

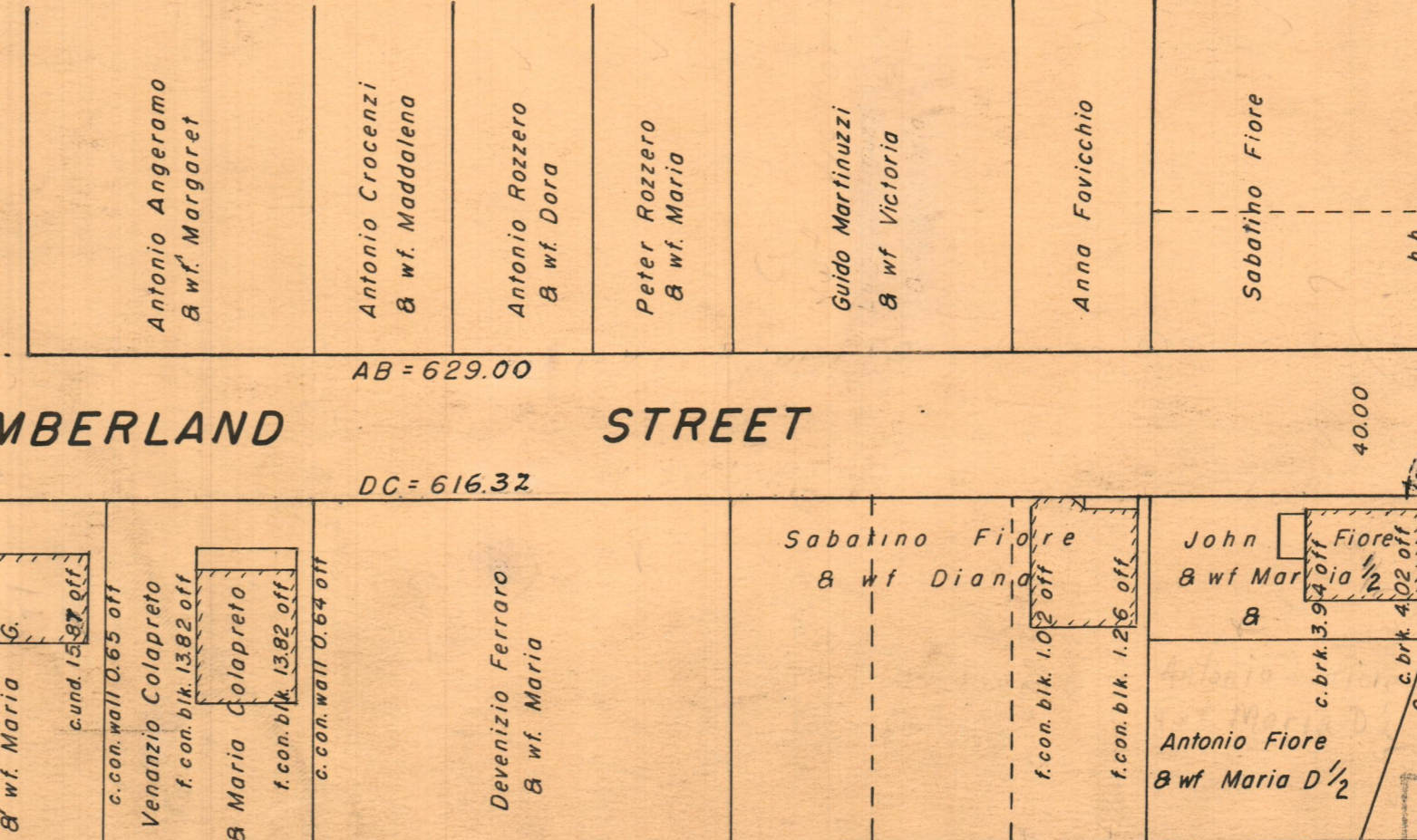
SANDRINGHAM



BRADLEY ST

CUMBERLAND

STREET



ADMIRAL ST.

ADMIRAL

PA=40.00  
D 90°

40.00

AB = 629.00

DC = 616.32

40.00

b.b. 0.33 off  
b.b. 1.67 off

707° 35'  
20'  
D.C. 41.94'

OFFICE No. 26910

DRAWER 88

SHEET A-41